



EDM Displays

Harvey Rarback
SPEAR Controls

- What is EDM?
 - Pedigree
 - Documentation (such as it is)
- Why use EDM?
 - Designed to work with EPICS
 - Easily create new displays graphically
 - Extensible
- How are we implementing EDM?
 - Design rules for operational displays
- EDM demo
 - Index display
 - Diagnostics displays



EPICS display managers

- **EDD/DM**
 - Developed at Los Alamos on Suns
 - Used for our RF diagnostic displays

begat
- **MEDM**
 - Developed at the APS with Motif

begat
- **DM2k**
 - Modified at Bessy (Till helped)
 - Ported to VMS by Clemens

begat
- ***EDM***
 - Written at ORNL/SNS by John Sinclair
 - See <http://www.sns.gov/projectinfo/epics/edm.ppt>



Some useful links



- EPICS home page
 - <http://epics.aps.anl.gov/epics/>
- SPEAR EPICS home page
 - <http://www.slac.stanford.edu/~spear/epics/>
- SPEAR EPICS PV Database
 - <http://www-ssrl.slac.stanford.edu/speardb/pv.jsp>
- EDM User Manual
 - <http://www.slac.stanford.edu/comp/unix/package/epics/extensions/edm/edm.html>
- SPEAR EDM Design Rules
 - <http://www.slac.stanford.edu/~spear/epics/edmRules.html>

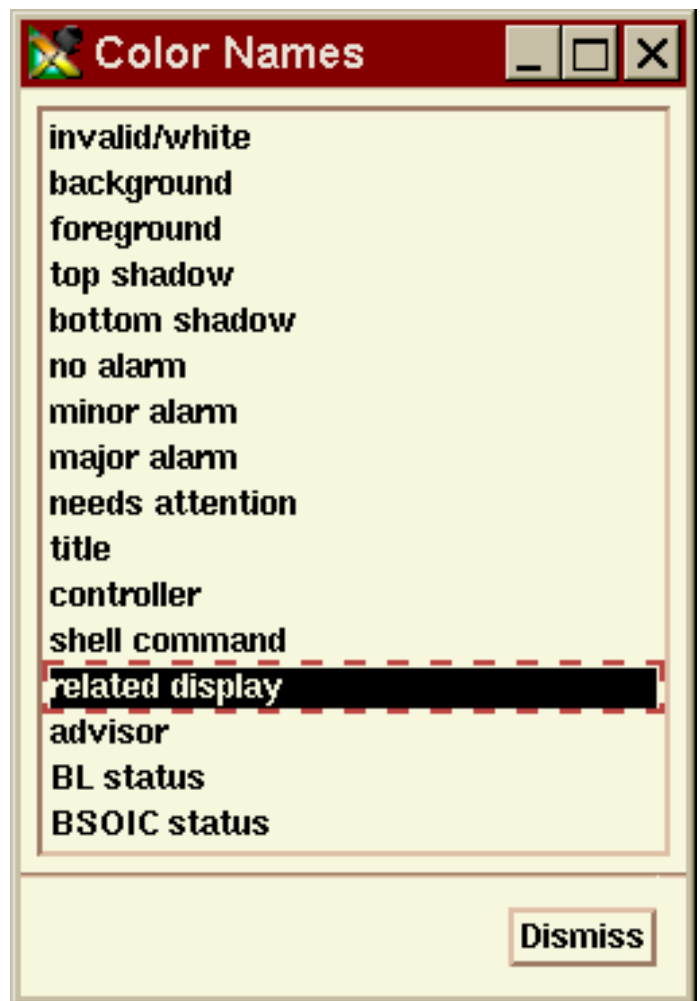
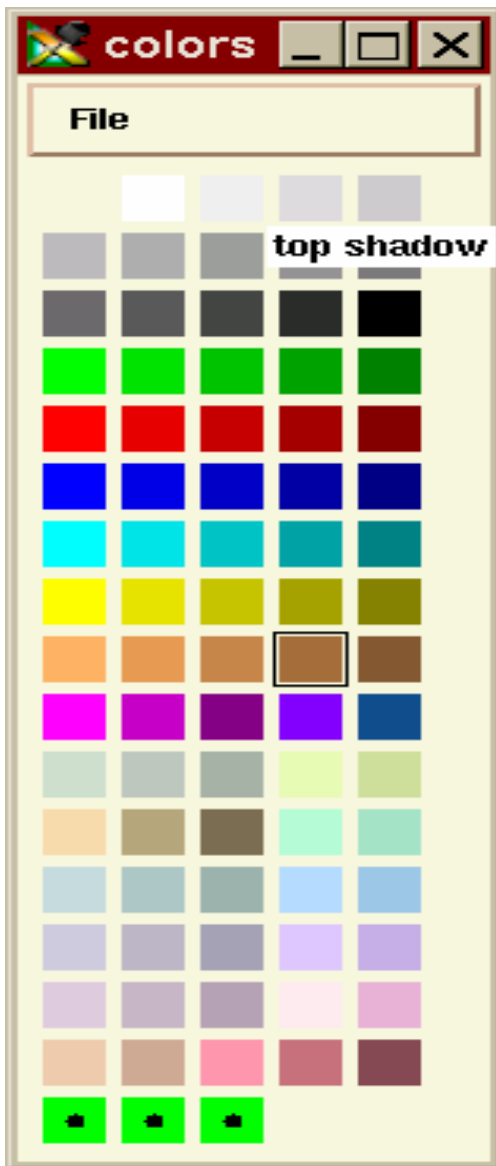


Template Display





Standard Colors & Rules





Standard Default Scheme

The screenshot shows a 'Display Properties' dialog box with the following settings:

- ID: [Empty text box]
- X: 598
- Y: 184
- Width: 500
- Height: 500
- Title: Template display
- PV Type: I
- Display Fg: [Black color swatch] foreground
- Display Bg: [White color swatch] background
- Show Grid (G/g): No
- Snap to Grid (S/s): No
- Grid Spacing: 10
- Orthogonal Move (M/m): No
- Orthogonal Line Draw (L/l): No
- Text Fg: [Black color swatch] foreground
- 1st Control Fg: [Black color swatch] foreground
- 2nd Control Fg: [White color swatch] invalid/white
- 1st Control Bg: [White color swatch] background
- 2nd Control Bg: [Blue color swatch] SPEAR blue
- Top Shadow: [Light gray color swatch] top shadow
- Bottom Shadow: [Dark gray color swatch] bottom shadow
- Default Text Font: new century schoolbook
18.0 B I L
- Default Control Font: helvetica
14.0 B I L
- Default Button Font: helvetica
14.0 B I L
- Activate Callback
- Deactivate Callback

Buttons: OK, Apply, Cancel



How to make flashing display

