

Activity ID	Activity Description	Orig Dur	Total Float	Resource ID	Budgeted Cost	Predecessors	FY08		FY09		FY10		FY11		FY12		
1.3 COHERENT X-RAY IMAGING (CXI)																	
01 Management / Administration																	
CXI 00300	COMP: Prelim Design Complete - CXI Instrument	0			0.00	CXI 01065											
CXI 00400	COMP: Prelim Design Complete - CXI Components	0	557		0.00	CXI 00300, CXI 03400, CXI 05680, CXI 08840, CXI 59310*											
CXI 00410	COMP: Final Design Complete - CXI Components	0	337		0.00	CXI 00400, CXI 02620*, CXI 03540, CXI 05820, CXI 08960, CXI 59410											
CXI 00420	COMP: CXI Instrument Design Ready for CD-3b	0	118		0.00	CXI 01095*											
CXI 00450	COMP: CXI CD-4b Components Installation Complete	0	95		0.00	CXI 00410, CXI 00500, CXI 10800*											
CXI 00480	COMP: CXI CD-4c Preliminary Design Complete	0	369		0.00	CXI 01660*											
CXI 00500	COMP: CXI CD-4c Final Design Complete	0	257		0.00	CXI 00480, CXI 01760*											
CXI 00540	COMP: CXI CD-4c Installation Complete	0	156		0.00	CXI 24130*											
1.3.01 CXI System Integration & Design																	
02 Design / Engineering																	
9100291 CXI Physics Support																	
CXI 01040	START: CXI Instrument	0			0.00	PM001000											
CXI 01045	Generate PRD - CXI System	7			0.00	CXI 01040											
CXI 01050	COMP: PRD Released - CXI System	0			0.00	CXI 01045											
CXI 01055	Prelim Design - CXI Instrument	40			0.00	CXI 01050											
CXI 01060	PIDR - Prelim Instrument Design Review - CXI	1			0.00	CXI 01055											
CXI 01065	Conceptual Design Approved - CXI System	0			0.00	CXI 01060											
CXI 01110	CXI Physics Support FY07	20			0.00	CXI 01040											
CXI 01120	CXI Physics Support FY08-Q1 & Q2	121		HIST_LBR	148,969.00	CXI 01110											
CXI 01180	Engineering Integration & Support FY07	20			0.00	CXI 01040											
CXI 01200	Engineering Integration & Support FY08-Q1 & Q2	121		HIST_LBR	148,969.00	CXI 01180											
CXI 01300	Lab Supplies FY08-Q1 & Q2	121		HIST_M&S	5,420.00	CXI 01040											
CXI 01400	Vendor Visits FY08-Q1 & Q2	121		HIST_M&S	16,559.00	CXI 01040											
CXI 30000	CXI Design Support FY07	19			0.00	CXI 01040											
CXI 30010	CXI Design Support FY08-Q1 & Q2	121			0.00	CXI 30000											
9110301 CXI System Integration & Design Support																	
CXI 01070	REQD: Diag & Common Optics Ready for CXI FIDR	0	274		0.00	DI 00112*											
CXI 01075	REQD: Controls and DAQ Ready for CXI FIDR	0	264		0.00	CD 00007*											
CXI 01080	REQD: CXI Components Ready for CXI FIDR	0	118		0.00	CXI 02520*, CXI 03400, CXI 05680, CXI 08840, CXI 09840											
CXI 01085	Prep for FDR - CXI Instrument	20	118		0.00	CXI 01070, CXI 01075, CXI 01080*											

Activity ID	Activity Description	Orig Dur	Total Float	Resource ID	Budgeted Cost	Predecessors	Fiscal Years															
							FY08	FY09	FY10	FY11	FY12	FY08	FY09	FY10	FY11	FY12	FY08	FY09	FY10	FY11	FY12	
CXI 01090	FIDR - Final Instrument Design Review - CXI	2	118		0.00	CXI 01085*																
CXI 01095	Incorp FIDR Changes - CXI Instrument	10	118		0.00	CXI 01090*																
CXI 01125	CXI Physics Support FY08-Q3 & Q4	131*	110	SL_PHSS	116,500.76	CXI 01120																
CXI 01130	CXI Physics Support FY09	249	110	SL_PHSS	65,058.72	CXI 01120, CXI 01125*																
CXI 01140	CXI Physics Support FY10	249	110	SL_PHSS	67,663.26	CXI 01130*																
CXI 01150	CXI Physics Support FY11	249	110	SL_PHSS	70,367.40	CXI 01140*																
CXI 01160	CXI Physics Support FY12	116	110	SL_PHSS	34,094.72	CXI 01150*																
CXI 01210	Engineering Integration & Support FY08-Q3 & Q4	131*	110	SL_MEE	57,996.32	CXI 01200																
CXI 01220	Engineering Integration & Support FY09	249	110	SL_MEE	114,649.56	CXI 01200, CXI 01210*																
CXI 01240	Engineering Integration & Support FY10	249	110	SL_MEE	89,430.84	CXI 01220*, CXI 40010																
CXI 01260	Engineering Integration & Support FY11	249	110	SL_MEE	93,008.97	CXI 01240*																
CXI 01280	Engineering Integration & Support FY12	116	110	SL_MEE	15,020.84	CXI 01160*, CXI 01260*																
CXI 01310	Lab Supplies FY08-Q3 & Q4	131*	110	SL_MSCS	5,502.00	CXI 01300																
CXI 01320	Lab Supplies FY09	249	110	SL_MSCS	10,700.00	CXI 01300, CXI 01310*																
CXI 01340	Lab Supplies FY10	249	110	SL_MSCS	4,360.00	CXI 01320*																
CXI 01360	Lab Supplies FY11	249	110	SL_MSCS	4,480.00	CXI 01340*																
CXI 01380	Lab Supplies FY12	116	110	SL_MSCS	3,450.00	CXI 01280*, CXI 01360*																
CXI 01410	Vendor Visits FY08-Q3 & Q4	131*	110	SL_TRVL	3,772.80	CXI 01400																
CXI 01420	Vendor Visits FY09	249	110	SL_TRVL	14,760.00	CXI 01400, CXI 01410*																
CXI 01440	Vendor Visits FY10	249	110	SL_TRVL	15,120.00	CXI 01420*																
CXI 01460	Vendor Visits FY11	249	110	SL_TRVL	11,520.00	CXI 01440*																
CXI 01480	Vendor Visits FY12	116	110	SL_TRVL	3,930.00	CXI 01380*, CXI 01460*																
CXI 05710	FDR - Fnl Dsn Review - Cornell Detector Packagng	1	300		0.00	CXI 01040																
CXI 09780	Generate Radiation Physics Doc - CXI Instrument	6	359	SL_MEE, SL_PHSS	9,830.00	PM300100*																
CXI 09790	Submit Radiation Physics Doc - CXI Instrument	0	359		0.00	CXI 09780*																
CXI 09820	Prep for Radiation Physics Review - CXI Instrum	10	359	SL_PHSS, SL_MEE	12,442.80	CXI 09790*																
CXI 09840	Radiation Physics Review - CXI Instrument	0	359		0.00	CXI 09820*																
CXI 30020	CXI Design Support FY08-Q3 & Q4	131*	110	SL_MDD	32,611.14	CXI 30010																
CXI 30030	CXI Design Support FY09	249	110	SL_MDD	42,977.40	CXI 30010, CXI 30020*																
CXI 30040	CXI Design Support FY10	249	110	SL_MDD	44,695.50	CXI 30030*																
CXI 30050	CXI Design Support FY11	249	110	SL_MDD	23,241.66	CXI 30040*																
CXI 30060	CXI Design Support FY12	116	110	SL_MDD	23,978.76	CXI 01480*, CXI 30050*																

Activity ID	Activity Description	Orig Dur	Total Float	Resource ID	Budgeted Cost	Predecessors	FY08												FY09												FY10												FY11												FY12											
1.3.02.01 CXI KB System (0.1 micron)																																																																		
02 Design / Engineering																																																																		
9110321 Design & Engr - CXI KB (.1 micron)																																																																		
CXI 01500	START: CXI KB System 0.1 um (CXI KB 0.1 Sys)	0			0.00	CXI 01065	◆ START: CXI KB System 0.1 um (CXI KB 0.1 Sys)																																																											
CXI 01510	Identify Potential Vendors - CXI KB 0.1 Sys	30			0.00	CXI 01500	▀ Identify Potential Vendors - CXI KB 0.1 Sys																																																											
CXI 01520	Generate PRD - CXI KB 0.1 Sys	30			0.00	CXI 01500	▀ Generate PRD - CXI KB 0.1 Sys																																																											
CXI 01530	Update PRD - CXI KB 0.1 Sys	30			0.00	CXI 01520	▀ Update PRD - CXI KB 0.1 Sys																																																											
CXI 01540	COMP: PRD Released - CXI KB 0.1 Sys	0			0.00	CXI 01510, CXI 01520, CXI 01530	◆ COMP: PRD Released - CXI KB 0.1 Sys																																																											
CXI 01560	Generate Initial ESD - CXI KB 0.1 Sys	40	117	SL_ME, SL_MEE	8,306.72	CXI 01540, CXI 02420*	▀ Generate Initial ESD - CXI KB 0.1 Sys																																																											
CXI 01580	COMP: ESD Released - CXI KB 0.1 Sys	0	117		0.00	CXI 01560*	◆ COMP: ESD Released - CXI KB 0.1 Sys																																																											
CXI 01590	Generate Purchase Spec - CXI KB 0.1 Sys	10	117	SL_MEE, SL_PHS	4,604.40	CXI 01580*	▀ Generate Purchase Spec - CXI KB 0.1 Sys																																																											
CXI 01600	Update ESD - CXI KB 0.1 Sys	30	193	SL_MEE, SL_ME	4,465.38	CXI 01580, CXI 01905*	▀ Update ESD - CXI KB 0.1 Sys																																																											
CXI 01610	Prelim Design - Mech/Chamber CXI KB 0.1 Sys	30	193	SL_ME	22,652.00	CXI 01600*, CXI 01600	▀ Prelim Design - Mech/Chamber CXI KB 0.1 Sys																																																											
CXI 01620	Controls Interface & Integ - CXI KB 0.1 Sys	20	208	SL_CE	2,907.60	CXI 01600, CXI 01610*	▀ Controls Interface & Integ - CXI KB 0.1 Sys																																																											
CXI 01630	Prelim Engr Analysis - CXI KB 0.1 Sys	30	193	SL_MEE	7,183.20	CXI 01600, CXI 01610*	▀ Prelim Engr Analysis - CXI KB 0.1 Sys																																																											
CXI 01640	Prep for PDR - CXI KB 0.1 Sys	12	193	SL_ME, SL_MEE	5,727.60	CXI 01620, CXI 01630*	▀ Prep for PDR - CXI KB 0.1 Sys																																																											
CXI 01660	PDR - Prelim Design Review - CXI KB 0.1 Sys	1	193	SL_MEE, SL_ME	931.92	CXI 01640*	▀ PDR - Prelim Design Review - CXI KB 0.1 Sys																																																											
CXI 01670	Final Engr Analysis - CXI KB 0.1 Sys	30	193	SL_MEE	7,183.20	CXI 01660*	▀ Final Engr Analysis - CXI KB 0.1 Sys																																																											
CXI 01690	Final Design - CXI KB 0.1 Sys	25	197	SL_ME	11,779.04	CXI 01670*	▀ Final Design - CXI KB 0.1 Sys																																																											
CXI 01700	Generate Assy & Detail Dwgs - CXI KB 0.1 Sys	30	197	SL_ME	22,652.00	CXI 01690*	▀ Generate Assy & Detail Dwgs - CXI KB 0.1 Sys																																																											
CXI 01720	Prep for FDR - CXI KB 0.1 Sys	12	197	SL_MEE, SL_ME	5,727.60	CXI 01700*	▀ Prep for FDR - CXI KB 0.1 Sys																																																											
CXI 01740	FDR - Final Design Review - CXI KB 0.1 Sys	1	193	SL_ME, SL_MEE	931.92	CXI 01720, CXI 01752*	▀ FDR - Final Design Review - CXI KB 0.1 Sys																																																											
CXI 01743	Prep for Seismic Review - CXI KB 0.1 Sys	5	193	SL_MEE	2,873.28	CXI 01670*	▀ Prep for Seismic Review - CXI KB 0.1 Sys																																																											
CXI 01746	Seismic Peer Review - CXI KB 0.1 Sys	20	193	SL_MEE	2,394.40	CXI 01743*	▀ Seismic Peer Review - CXI KB 0.1 Sys																																																											
CXI 01749	Seismic Review Approval - CXI KB 0.1 Sys	1	193	SL_MEE	478.88	CXI 01746*	▀ Seismic Review Approval - CXI KB 0.1 Sys																																																											
CXI 01752	COMP: Committee Approval - CXI KB 0.1 Sys	0	193		0.00	CXI 01749*	◆ COMP: Committee Approval - CXI KB 0.1 Sys																																																											
CXI 01760	Incorp FDR Changes - CXI KB 0.1 Sys	25	193	SL_ME	4,530.40	CXI 01740*	▀ Incorp FDR Changes - CXI KB 0.1 Sys																																																											
CXI 01780	Check & Approve Dwgs - CXI KB 0.1 Sys	12	193	SL_MEE, SL_MD, SL_ME	17,660.40	CXI 01760*	▀ Check & Approve Dwgs - CXI KB 0.1 Sys																																																											
CXI 01790	Generate Mfg Docs - CXI KB 0.1 Sys	20	243	SL_MEE	4,788.80	CXI 01780*	▀ Generate Mfg Docs - CXI KB 0.1 Sys																																																											
03 Procurement																																																																		
9110322 Procurement - CXI KB (.1 micron)																																																																		
CXI 01940	Procurement Preps-All Other Parts CXI KB 0.1 Sys	30	156		0.00	CXI 01780, PM300110*	▀ Procurement Preps-All Other Parts CXI KB 0.1 Sys																																																											
CXI 01960	AWARD: PO - All Other Parts CXI KB 0.1 Sys	1	156	AWARD	38,987.20	CXI 01940*, PM003030	▀ AWARD: PO - All Other Parts CXI KB 0.1 Sys																																																											

Activity ID	Activity Description	Orig Dur	Total Float	Resource ID	Budgeted Cost	Predecessors	FY08		FY09		FY10		FY11		FY12	
CXI 01980	Vendor Fab - All Others Parts CXI KB 0.1 Sys	80	156	SL_MSEQ	38,987.20	CXI 01960*										Vendor Fab - All Others Parts CXI KB 0.1 Sys
CXI 02000	RCV: All Other Parts CXI KB 0.1 Sys	0	156		0.00	CXI 01980*										RCV: All Other Parts CXI KB 0.1 Sys
04 Subcontract																
9110323 Subcontract - CXI KB (.1 micron)																
CXI 01890	AWARD: Long Lead CXI KB 0.1 Sys	1	169	AWARD	968,350.00	CXI 02736, CXI 02740, PM002200, PM300100*										AWARD: Long Lead CXI KB 0.1 Sys
CXI 01900	Vendor Fab - Long Lead CXI KB 0.1 Sys	340	169	SL_MSSY	991,746.91	CXI 01890*, PM002220*										Vendor Fab - Long Lead CXI KB 0.1 Sys
CXI 01905	PDR - Vendor Design Review - CXI KB 0.1 Sys	1	169		0.00	CXI 01900*										PDR - Vendor Design Review - CXI KB 0.1 Sys
CXI 01910	FDR - Vendor Design Review - CXI KB 0.1 Sys	1	218		0.00	CXI 01905*										FDR - Vendor Design Review - CXI KB 0.1 Sys
CXI 01912	RCV: Long Lead CXI KB 0.1 Sys	0	184		0.00	CXI 01900*, CXI 01910										RCV: Long Lead CXI KB 0.1 Sys
CXI 01914	Prep Bid Pkg & App - Metrology CXI KB 0.1 Sys	15	218		0.00	CXI 01890, CXI 01910*										Prep Bid Pkg & App - Metrology CXI KB 0.1 Sys
CXI 01916	RELEASE: RFP - Metrology CXI KB 0.1 Sys	0	308		0.00	CXI 01914*										RELEASE: RFP - Metrology CXI KB 0.1 Sys
CXI 01918	Vendor Proposal Effort Metrology CXI KB 0.1 Sys	20	308		0.00	CXI 01916*										Vendor Proposal Effort Metrology CXI KB 0.1 Sys
CXI 01920	RCV: Vendor Proposals Metrology CXI KB 0.1 Sys	0	308		0.00	CXI 01918*										RCV: Vendor Proposals Metrology CXI KB 0.1 Sys
CXI 01922	Eval & Selection Proces-Metrology CXI KB 0.1 Sys	15	308		0.00	CXI 01920*										Eval & Selection Proces-Metrology CXI KB 0.1 Sys
CXI 01924	Vendor Selection - Metrology CXI KB 0.1 Sys	0	308		0.00	CXI 01922*										Vendor Selection - Metrology CXI KB 0.1 Sys
CXI 01926	SLAC Approval Process - Metrology CXI KB 0.1 Sys	5	308		0.00	CXI 01924*										SLAC Approval Process - Metrology CXI KB 0.1 Sys
CXI 01928	DOE Approval Process - Metrology CXI KB 0.1 Sys	5	308		0.00	CXI 01926*										DOE Approval Process - Metrology CXI KB 0.1 Sys
CXI 01930	AWARD: Mirror Metrology - CXI KB 0.1 Sys	1	308	AWARD	63,220.00	CXI 01928*, PM003030										AWARD: Mirror Metrology - CXI KB 0.1 Sys
CXI 02005	Prep Bid Pkg & App - Coating CXI KB 0.1 Sys	30	218		0.00	CXI 01914*										Prep Bid Pkg & App - Coating CXI KB 0.1 Sys
CXI 02010	RELEASE: RFP - Coating CXI KB 0.1 Sys	0	218		0.00	CXI 02005*										RELEASE: RFP - Coating CXI KB 0.1 Sys
CXI 02015	Vendor Proposal Effort - Coating CXI KB 0.1 Sys	20	218		0.00	CXI 02010*										Vendor Proposal Effort - Coating CXI KB 0.1 Sys
CXI 02020	RCV: Vendor Proposals - Coating CXI KB 0.1 Sys	0	218		0.00	CXI 02015*										RCV: Vendor Proposals - Coating CXI KB 0.1 Sys
CXI 02025	Evaluation/Selection - Coating CXI KB 0.1 Sys	15	218		0.00	CXI 02005, CXI 02020*										Evaluation/Selection - Coating CXI KB 0.1 Sys
CXI 02030	Vendor Selection - Coating CXI KB 0.1 Sys	0	218		0.00	CXI 02025*										Vendor Selection - Coating CXI KB 0.1 Sys
CXI 02035	SLAC Approval Process - Coating CXI KB 0.1 Sys	5	218		0.00	CXI 02030*										SLAC Approval Process - Coating CXI KB 0.1 Sys
CXI 02040	DOE Approval Process - Coating CXI KB 0.1 Sys	5	218		0.00	CXI 02035*										DOE Approval Process - Coating CXI KB 0.1 Sys
CXI 02045	AWARD: Coating CXI KB 0.1 Sys	1	218	AWARD	87,200.00	CXI 02040*, PM003030										AWARD: Coating CXI KB 0.1 Sys
CXI 02050	Vendor Effort - Coating Prep CXI KB 0.1 Sys	60	218	SL_MSEQ	32,700.00	CXI 02045*										Vendor Effort - Coating Prep CXI KB 0.1 Sys
CXI 02055	Vendor Effort - Coating CXI KB 0.1 Sys	30	184	SL_MSEQ	56,000.00	CXI 01912*, CXI 02050										Vendor Effort - Coating CXI KB 0.1 Sys
CXI 02060	RCV: Mirror Coating Vendor - CXI KB 0.1 Sys	0	184		0.00	CXI 02055*										RCV: Mirror Coating Vendor - CXI KB 0.1 Sys
CXI 02100	Vendor Effort - Metrology CXI KB 0.1 Sys	40	184	SL_MSEQ	64,960.00	CXI 01912*, CXI 01930, CXI 02060*										Vendor Effort - Metrology CXI KB 0.1 Sys
CXI 02105	RCV: Mirror Metrology Vendor - CXI KB 0.1 Sys	0	184		0.00	CXI 02100*										RCV: Mirror Metrology Vendor - CXI KB 0.1 Sys

Activity ID	Activity Description	Orig Dur	Total Float	Resource ID	Budgeted Cost	Predecessors	FY08		FY09		FY10		FY11		FY12	
CXI 02480	Controls Interface & Integ - CXI KB 1 Sys	20	133	SL_CE	2,795.76	CXI 02460*					▲					
CXI 02490	Prelim Engr Analysis - CXI KB 1 Sys	30	118	SL_MEE	6,906.60	CXI 02460*					▲					
CXI 02500	Prep for PDR - CXI KB 1 Sys	10	118	SL_MEE, SL_ME	5,683.50	CXI 02470*, CXI 02480, CXI 02490*					▲					
CXI 02520	PDR - Prelim Design Review - CXI KB 1 Sys	1	118	SL_MEE, SL_ME	931.92	CXI 02500*					▲					
CXI 02530	Final Engr Analysis - CXI KB 1 Sys	30	139	SL_MEE	7,183.20	CXI 02520*					▲					
CXI 02550	Final Design - CXI KB 1 Sys	25	143	SL_ME	11,779.04	CXI 02530*					▲					
CXI 02560	Generate Assy & Detail Dwgs - CXI KB 1 Sys	30	143	SL_ME	22,652.00	CXI 02550*					▲					
CXI 02580	Prep for FDR - CXI KB 1 Sys	12	143	SL_MEE, SL_ME	5,727.60	CXI 02560*					▲					
CXI 02600	FDR - Final Design Review - CXI KB 1 Sys	1	139	SL_MEE, SL_ME	931.92	CXI 02580, CXI 02616*					▲					
CXI 02604	Prep for Seismic Review - CXI KB 1 Sys	5	139	SL_MEE	2,873.28	CXI 02530*					▲					
CXI 02608	Seismic Peer Review - CXI KB 1 Sys	20	139	SL_MEE	2,394.40	CXI 02604*					▲					
CXI 02612	Seismic Review Approval - CXI KB 1 Sys	1	139	SL_MEE	478.88	CXI 02608*					▲					
CXI 02616	COMP: Committee Approval - CXI KB 1 Sys	0	139		0.00	CXI 02612*					◆					
CXI 02620	Incorp FDR Changes - CXI KB 1 Sys	25	139	SL_ME	4,530.40	CXI 02600*					▲					
CXI 02640	Check & Approve Dwgs - CXI KB 1 Sys	12	139	SL_ME, SL_MD, SL_MEE	17,660.40	CXI 02620*					▲					
CXI 02650	Generate Mfg Docs - CXI KB 1 Sys	20	189	SL_MEE	4,788.80	CXI 02640*					▲					
03 Procurement																
9110327 Procurement - CXI KB (1 micron)																
CXI 02900	Procurement Preps - All Other Parts CXI KB 1 Sys	30	139		0.00	CXI 02640*					▲					
CXI 02910	AWARD: PO - All Other Parts CXI KB 1 Sys	1	139	AWARD	37,942.90	CXI 02900*, PM003030					▲					
CXI 02920	Vendor Fab - All Others Parts CXI KB 1 Sys	80	139	SL_MSEQ	37,942.90	CXI 02910*					▲					
CXI 02930	RCV: All Other Parts CXI KB 1 Sys	0	139		0.00	CXI 02920*					◆					
04 Subcontract																
9110328 Subcontract - CXI KB (1 micron)																
CXI 02720	Prep Bid Pkg & App - CXI KB Systems	30	117		0.00	CXI 01590*, CXI 02450					▲					
CXI 02722	RELEASE: RFP - CXI KB Systems	0	117		0.00	CXI 02720*					◆					
CXI 02724	Vendor Proposal Effort - CXI KB Systems	20	117		0.00	CXI 02722*					▲					
CXI 02726	RCV: Vendor Proposals - CXI KB Systems	0	117		0.00	CXI 02724*					◆					
CXI 02730	Eval & Selection Process - CXI KB Systems	20	117		0.00	CXI 02720, CXI 02726*					▲					
CXI 02732	Vendor Selection - CXI KB Systems	0	117		0.00	CXI 02730*					◆					
CXI 02734	SLAC Approval Process - CXI KB Systems	10	117		0.00	CXI 02732*					▲					
CXI 02736	DOE Approval Process - CXI KB Systems	10	117		0.00	CXI 02734*					▲					
CXI 02740	AWARD: Long Lead CXI KB 1 Sys	1	117	AWARD	968,350.00	CXI 02736*, PM002200					▲					

Activity ID	Activity Description	Orig Dur	Total Float	Resource ID	Budgeted Cost	Predecessors	FY08		FY09		FY10		FY11		FY12	
CXI 02760	Vendor Fab - Long Lead CXI KB 1 Sys	340	117	SL_MSSY	986,450.00	CXI 02740*										
CXI 02770	PDR - Vendor Design Review CXI KB 1 Sys	1	118		0.00	CXI 02760*										
CXI 02775	FDR - Vendor Design Review CXI KB 1 Sys	1	137		0.00	CXI 02770*										
CXI 02780	RCV: Long Lead CXI KB 1 Sys	0	117		0.00	CXI 02760*, CXI 02775										
CXI 02800	Prep Bid Pkg & App - Metrology CXI KB 1 Sys	30	137		0.00	CXI 02740, CXI 02775*										
CXI 02805	RELEASE: RFP - Metrology CXI KB 1 Sys	0	227		0.00	CXI 02800*										
CXI 02810	Vendor Proposal Effort - Metrology CXI KB 1 Sys	20	227		0.00	CXI 02805*										
CXI 02815	RCV: Vendor Proposals - Metrology CXI KB 1 Sys	0	227		0.00	CXI 02810*										
CXI 02820	Eval & Selection Process - Metrology CXI KB1 Sys	15	227		0.00	CXI 02815*										
CXI 02825	Vendor Selection - Metrology CXI KB 1 Sys	0	227		0.00	CXI 02820*										
CXI 02830	SLAC Approval Process - Metrology CXI KB 1 Sys	5	227		0.00	CXI 02825*										
CXI 02835	DOE Approval Process - Metrology CXI KB 1 Sys	5	227		0.00	CXI 02830*										
CXI 02850	AWARD: Metrology CXI KB 1 Sys	1	227	AWARD	63,220.00	CXI 02835*, PM003030										
CXI 02855	Vendor Effort - Metrology CXI KB 1 Sys	40	117	SL_MSEQ	64,090.00	CXI 02780*, CXI 02850, CXI 03000*										
CXI 02857	RCV: Mirror Metrology Vendor - CXI KB 1 Sys	0	117		0.00	CXI 02855*										
CXI 02950	Prep Bid Pkg & App - Coating CXI KB 1 Sys	30	137		0.00	CXI 02800, CXI 02800*										
CXI 02955	RELEASE: RFP - Coating CXI KB 1 Sys	0	137		0.00	CXI 02950*										
CXI 02960	Vendor Proposal Effort - Coating CXI KB 1 Sys	20	137		0.00	CXI 02955*										
CXI 02965	RCV: Vendor Proposals - Coating CXI KB 1 Sys	0	137		0.00	CXI 02960*										
CXI 02970	Evaluation/Selection - Coating CXI KB1 Sys	15	137		0.00	CXI 02950, CXI 02965*										
CXI 02975	Vendor Selection - Coating CXI KB 1 Sys	0	137		0.00	CXI 02970*										
CXI 02980	SLAC Approval Process - Coating CXI KB 1 Sys	5	137		0.00	CXI 02975*										
CXI 02985	DOE Approval Process - Coating CXI KB 1 Sys	5	137		0.00	CXI 02980*										
CXI 02990	AWARD: Coating CXI KB 1 Sys	1	137	AWARD	87,200.00	CXI 02985*, PM003030										
CXI 02992	Vendor Effort - Coating Prep CXI KB 1 Sys	60	137	SL_MSEQ	32,700.00	CXI 02990*										
CXI 02995	Vendor Effort - Coating CXI KB 1 Sys	30	117	SL_MSEQ	54,500.00	CXI 02780*, CXI 02992										
CXI 03000	RCV: Mirror Coating Vendor - CXI KB 1 Sys	0	117		0.00	CXI 02995*										
05 Fab / Assembly																
9110329 Fab & Assembly - CXI KB (1 micron)																
CXI 02860	Assemble by Vendor CXI KB 1 Sys	10	117		0.00	CXI 02857*										
CXI 02865	Functional Test - CXI KB 1 Sys	5	117	SL_AT	2,510.88	CXI 02860*										
CXI 02875	Submit Shop Orders - CXI KB 1 Sys	1	189	SL_MEE	957.76	CXI 02650*										

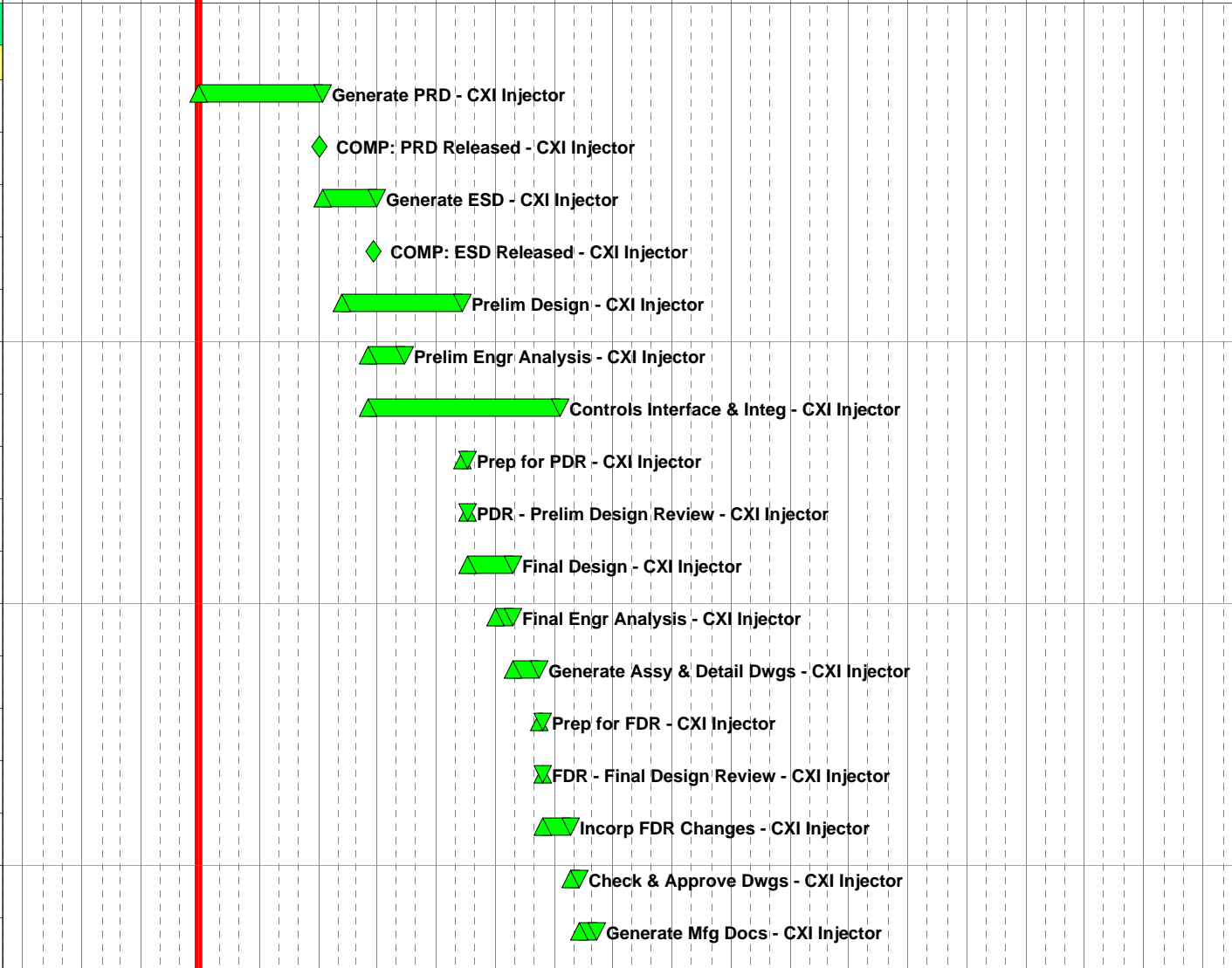
Activity ID	Activity Description	Orig Dur	Total Float	Resource ID	Budgeted Cost	Predecessors	FY08		FY09		FY10		FY11		FY12	
CXI 02885	Process MFD Input - CXI KB 1 Sys	10	189	SL_MF	4,958.40	CXI 02875*										
CXI 02895	Machining Processes - CXI KB 1 Sys	20	189	SL_MF	14,875.20	CXI 02885*										
CXI 03100	Welding - CXI KB 1 Sys	10	189	SL_MF	9,916.80	CXI 02895*										
CXI 03130	Inspect All Parts - All Misc CXI KB 1 Sys	10	117	SL_SEE, SL_AT	3,848.82	CXI 02865*, CXI 02930, CXI 03100										
CXI 03135	Clean - All Other Parts CXI KB 1 Sys	3	117	SL_MFPC	4,956.48	CXI 03130*										
CXI 03140	Vacuum Leak Check - Chamber CXI KB 1 Sys	2	117	SL_AT	2,510.88	CXI 03135*										
CXI 03145	Install Mirror Chamber in CXI KB 1 Sys	8	117	SL_AT	12,554.40	CXI 03140*										
CXI 03150	Vacuum Process - CXI KB 1 Sys	2	120	SL_AT	1,673.92	CXI 03145*										
CXI 03155	Pre-Survey - CXI KB 1 Sys	5	117	SL_MES	2,864.32	CXI 03145*										
CXI 03160	Connect Electrical & Controls - CXI KB 1 Sys	6	117	SL_CT, SL_AT	4,852.00	CXI 03150, CXI 03155*										
06 Testing																
9110330 Testing - CXI KB (1 micron)																
CXI 03170	REQD: KB Mirror System Controls HW & SW	0	117		0.00	CD 11260, CD 11280, CXI 03160*										
CXI 03180	Final Test - CXI KB 1 Sys	4	117	SL_AT, SL_CT	4,433.52	CXI 03160*, CXI 03170*										
CXI 03200	AVAIL: Ready For Installation CXI KB 1 Sys	0	117		0.00	CXI 03180*										
1.3.03.01 CXI Reference laser																
02 Design / Engineering																
9110331 Design & Engr - CXI Reference Laser																
CXI 03220	START: Reference Laser (CXI Ref Laser)	0			0.00	CXI 00300										
CXI 03240	Generate PRD - CXI Ref Laser	6		SL_PHS	0.00	CXI 03220										
CXI 03260	COMP: PRD Released - CXI Ref Laser	0			0.00	CXI 03240										
CXI 03280	Generate ESD - CXI Ref Laser	120*	377	SL_MEE, SL_ME	5,295.20	CXI 03260										
CXI 03285	COMP: ESD Released - CXI Ref Laser	0	377		0.00	CXI 03280*										
CXI 03320	Prelim Design - CXI Ref Laser	132*	365	SL_ME	12,569.01	CXI 03280, CXI 03285										
CXI 03330	Prelim Engr Analysis - CXI Ref Laser	4	365	SL_MEE	1,841.76	CXI 03320*										
CXI 03360	Controls Interface & Integ - CXI Ref Laser	4	432	SL_CE	1,344.12	CXI 03320										
CXI 03380	Prep for PDR - CXI Ref Laser	5	365	SL_MEE, SL_ME	5,507.10	CXI 03330*, CXI 03360										
CXI 03400	PDR - Prelim Design Review - CXI Ref Laser	1	365	SL_MEE, SL_ME	896.04	CXI 03380*										
CXI 03440	Final Design - CXI Ref Laser	10	443	SL_ME	3,267.00	CXI 03400*										
CXI 03445	Final Engr Analysis - CXI Ref Laser	10	443	SL_MEE	1,841.76	CXI 03440*										
CXI 03480	Generate Assy & Detail Dwgs - CXI Ref Laser	12	443	SL_ME	8,712.00	CXI 03440, CXI 03445*										
CXI 03500	Prep for FDR - CXI Ref Laser	5	443	SL_ME, SL_MEE	5,507.10	CXI 03480*										
CXI 03520	FDR - Final Design Review - CXI Ref Laser	1	443	SL_MEE, SL_ME	896.04	CXI 03500*										

Activity ID	Activity Description	Orig Dur	Total Float	Resource ID	Budgeted Cost	Predecessors	Fiscal Year						
							FY08	FY09	FY10	FY11	FY12		
CXI 40020	Physics Support FY09	249	110	SL_PHSS	65,058.72	CXI 40015*			Physics Support FY09				
CXI 40025	Physics Support FY10	249	110	SL_PHSS	67,663.26	CXI 40020*			Physics Support FY10				
CXI 40035	Physics Support FY11	249	110	SL_PHSS	70,367.40	CXI 40025*				Physics Support FY11			
CXI 40040	Physics Support FY12- Q1 & Q2	116	110	SL_PHSS	34,094.72	CXI 40035*				Physics Support FY12- Q1 & Q2			

02 Design / Engineering

9110342 Engineering - Coherent Imaging Injector

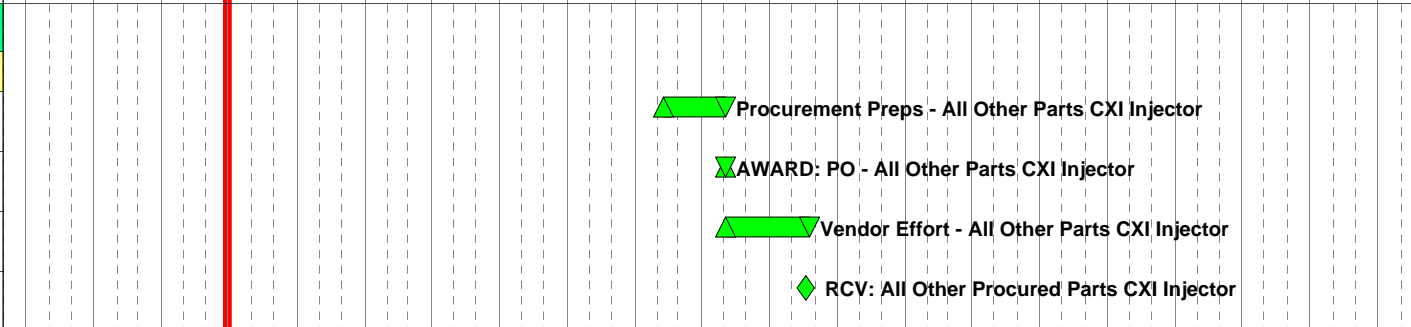
CXI 40030	Generate PRD - CXI Injector	125	73	SL_PHS, SL_PHSS	0.00	CXI 40000*
CXI 40050	COMP: PRD Released - CXI Injector	0	73		0.00	CXI 40030*
CXI 40070	Generate ESD - CXI Injector	60	73	SL_ME, SL_MEE	19,974.60	CXI 40050*
CXI 40090	COMP: ESD Released - CXI Injector	0	168		0.00	CXI 40070*
CXI 40110	Prelim Design - CXI Injector	135	73	SL_ME	93,654.00	CXI 40070*, CXI 40090
CXI 40130	Prelim Engr Analysis - CXI Injector	40	138	SL_MEE	9,208.80	CXI 40110*
CXI 40150	Controls Interface & Integ - CXI Injector	200	256	SL_CE	14,146.56	CXI 40110*
CXI 40170	Prep for PDR - CXI Injector	5	73	SL_MEE, SL_ME	5,507.10	CXI 40110*, CXI 40130
CXI 40190	PDR - Prelim Design Review - CXI Injector	1	73	SL_ME, SL_MEE	896.04	CXI 40170*
CXI 40210	Final Design - CXI Injector	50	105	SL_ME	33,219.36	CXI 40190*
CXI 40230	Final Engr Analysis - CXI Injector	20	105	SL_MEE	4,788.80	CXI 40190, CXI 40210*
CXI 40250	Generate Assy & Detail Dwgs - CXI Injector	25	105	SL_ME	22,652.00	CXI 40210, CXI 40230*
CXI 40270	Prep for FDR - CXI Injector	5	105	SL_MEE, SL_ME	5,727.60	CXI 40250*
CXI 40290	FDR - Final Design Review - CXI Injector	1	105	SL_MEE, SL_ME	931.92	CXI 40270*
CXI 40310	Incorp FDR Changes - CXI Injector	20	245	SL_ME	13,591.20	CXI 40150, CXI 40290*
CXI 40330	Check & Approve Dwgs - CXI Injector	10	245	SL_MD, SL_ME, SL_MEE	17,660.40	CXI 40310*
CXI 40350	Generate Mfg Docs - CXI Injector	20	250	SL_MEE	9,577.60	CXI 40330*



03 Procurement

9110343 Procurement - Coherent Imaging Injector

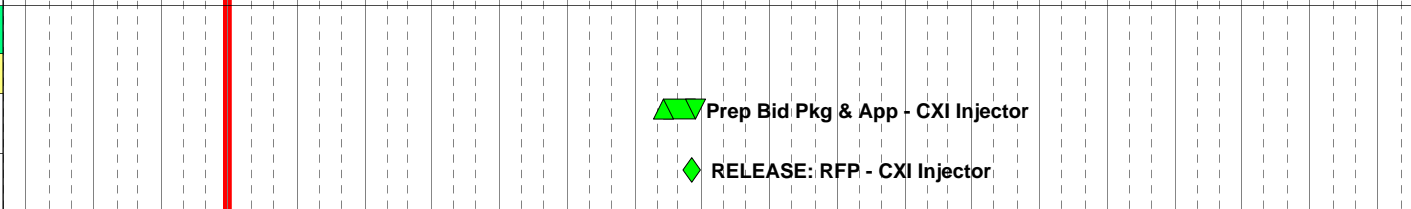
CXI 40370	Procurement Preps - All Other Parts CXI Injector	60	245		0.00	CXI 40330*
CXI 40390	AWARD: PO - All Other Parts CXI Injector	1	245	AWARD	158,747.60	CXI 40370*, PM003030
CXI 40410	Vendor Effort - All Other Parts CXI Injector	80	245	SL_MSEG	158,747.60	CXI 40390*
CXI 40420	RCV: All Other Procured Parts CXI Injector	0	245		0.00	CXI 40410*



04 Subcontract

9110343 Procurement - Coherent Imaging Injector

CXI 40425	Prep Bid Pkg & App - CXI Injector	30	250		0.00	CXI 40350*
CXI 40428	RELEASE: RFP - CXI Injector	0	250		0.00	CXI 40425*



Activity ID	Activity Description	Orig Dur	Total Float	Resource ID	Budgeted Cost	Predecessors	FY08		FY09		FY10		FY11		FY12	
CXI 40431	Vendor Proposal Effort - CXI Injector	20	250		0.00	CXI 40428*										
CXI 40434	RCV: Vendor Proposals - CXI Injector	0	250		0.00	CXI 40431*										
CXI 40437	Eval & Selection Process - CXI Injector	15	250		0.00	CXI 40434*										
CXI 40440	Vendor Selection - CXI Injector	0	250		0.00	CXI 40437*										
CXI 40443	SLAC Approval Process - CXI Injector	5	250		0.00	CXI 40440*										
CXI 40446	DOE Approval Process - CXI Injector	5	250		0.00	CXI 40443*										
CXI 40449	AWARD: Parts - CXI Injector	1	250	AWARD	175,697.10	CXI 40446*, PM003030										
CXI 40452	Vendor Effort - CXI Injector	60	250	SL_MSEQ	175,697.10	CXI 40449*										
CXI 40455	RCV: Parts - CXI Injector	0	250		0.00	CXI 40452*										
05 Fab / Assembly																
9110344 Fab and Installation - Coherent Imaging Injector																
CXI 40480	Inspect Procured Parts - Misc CXI Injector	5	245	SL_AT, SL_SEE	4,725.00	CXI 40420*, CXI 40455										
CXI 40490	Submit Shop Orders - CXI Injector	1	274	SL_MEE	957.76	CXI 40350*										
CXI 40500	Process MFD Input - CXI Injector	10	274	SL_MF	4,958.40	CXI 40490*										
CXI 40510	Machining Processes - CXI Injector	60	274	SL_MF	29,750.40	CXI 40500*										
CXI 40530	Welding - CXI Injector	20	274	SL_MF	7,437.60	CXI 40510*										
CXI 40550	RCV: Fab Parts CXI Injector	0	274		0.00	CXI 40530*										
CXI 40570	Inspect Fab Parts - CXI Injector	6	274	SL_AT	4,023.60	CXI 40550*										
CXI 40590	Clean - CXI Injector	6	245	SL_MFPC	4,765.68	CXI 40480*, CXI 40570										
CXI 40610	Assemble Parts - CXI Injector	20	245	SL_CT, SL_AT	18,898.16	CXI 40590*										
CXI 40630	Vacuum Process - CXI Injector	15	245	SL_AT	8,369.60	CXI 40610*										
06 Testing																
TST_PP Testing Planning Package																
CXI 40650	Alignment - CXI Injector	20	245	SL_PHSS, SL_MES	3,580.40	CXI 40630*										
CXI 40670	REQD: CXI Injector HW & SW	0	265		0.00	CD 11660*, CD 11680*										
CXI 40690	Functional Testing - CXI Injector	30	245	SL_PHSS, SL_AT, SL_PHS, SL_CT	19,097.10	CXI 40650*, CXI 40670										
CXI 40710	Injector Optimization - CXI Injector	60	245	SL_PHSS, SL_PHS, SL_AT, SL_CT	17,361.00	CXI 40690*										
CXI 40730	AVAIL: Ready For Install CXI Injector	0	245		0.00	CXI 40710*										
1.3.05.01.01 CXI Sample Chambers & Ion TOF																
02 Design / Engineering																
ENG_PP Engineering Planning Package																
CXI 31000	START: Ion TOF (CXI Ion TOF)	0	285		0.00	CXI 04720, PM300105*										
CXI 31020	Generate PRD - CXI Ion TOF	15	285	SL_PHS	0.00	CXI 31000*										

Activity ID	Activity Description	Orig Dur	Total Float	Resource ID	Budgeted Cost	Predecessors	FY08		FY09		FY10		FY11		FY12	
CXI 31040	COMP: PRD Released - CXI Ion TOF	0	285		0.00	CXI 31020*										
CXI 31060	Generate ESD - CXI Ion TOF	8	285	SL_MEE, SL_ME	4,582.08	CXI 31040*										
CXI 31080	COMP: ESD Released - CXI Ion TOF	0	285		0.00	CXI 31060*										
CXI 31100	Prelim Design - CXI Ion TOF	25	285	SL_ME	18,121.60	CXI 31080*										
CXI 31140	Controls Interface & Integ - CXI Ion TOF	4	301	SL_CE	1,938.40	CXI 31100*										
CXI 31160	Prelim Engr Analysis - CXI Ion TOF	4	306	SL_MEE	1,915.52	CXI 31080*										
CXI 31180	Prep for PDR - CXI Ion TOF	5	285	SL_MEE, SL_ME	5,727.60	CXI 31100*, CXI 31140, CXI 31160										
CXI 31200	PDR - Prelim Design Review - CXI Ion TOF	1	285	SL_ME, SL_MEE	931.92	CXI 31180*										
CXI 31240	Final Engr Analysis - CXI Ion TOF	2	285	SL_MEE	957.76	CXI 31200*										
CXI 31260	Final Design - CXI Ion TOF	12	285	SL_ME	9,060.80	CXI 31240*										
CXI 31280	Generate Assy & Detail Dwgs - CXI Ion TOF	12	285	SL_MD	7,621.60	CXI 31260*										
CXI 31300	Prep for FDR - CXI Ion TOF	3	285	SL_ME, SL_MEE	5,727.60	CXI 31280*										
CXI 31320	FDR - Final Design Review - CXI Ion TOF	1	285	SL_ME, SL_MEE	931.92	CXI 31300*										
CXI 31340	Incorp FDR Changes - CXI Ion TOF	6	285	SL_ME	4,530.40	CXI 31320*										
CXI 31360	Check & Approve Dwgs - CXI Ion TOF	3	285	SL_ME, SL_MEE, SL_MD	6,622.65	CXI 31340*										
CXI 31370	Generate Mfg Docs - CXI Ion TOF	20	285	SL_MEE	9,577.60	CXI 31360*										
ENG_PP2 Engineering Planning Package 2																
CXI_351000	START: CXI 0.1um Sample Chamber (SC)	0	179		0.00	CXI 04760, PM300105*										
CXI_351005	Generate PRD - CXI 0.1um SC	15	179		0.00	CXI_351000*										
CXI_351010	COMP: PRD Released - CXI 0.1um SC	0	179		0.00	CXI_351005*										
CXI_351015	Generate ESD - CXI 0.1um SC	30	169	SL_MEE, SL_ME	18,380.00	CXI 01905*, CXI_351010										
CXI_351020	COMP: ESD Released - CXI 0.1um SC	0	179		0.00	CXI_351010, CXI_351015*										
CXI_351025	Prelim Design - CXI 0.1um SC	20	169	SL_ME, SL_MEE	74,036.80	CXI 01905, CXI_351015*, CXI_351020										
CXI_351030	Controls Interface & Integ - CXI 0.1um SC	10	189	SL_CE	4,846.00	CXI_351025*										
CXI_351035	Prelim Engr Analysis - CXI 0.1um SC	30	169	SL_MEE	14,366.40	CXI_351025*										
CXI_351040	Prep for PDR - CXI 0.1um SC	10	169	SL_MEE, SL_ME	9,319.20	CXI_351030, CXI_351035*										
CXI_351045	PDR - Prelim Design Review - CXI 0.1um SC	1	169	SL_ME, SL_MEE	931.92	CXI_351040*										
CXI_351050	Final Engr Analysis - CXI 0.1um SC	30	169	SL_MEE	7,183.20	CXI_351045*										
CXI_351055	Prep for Seismic Review - CXI 0.1um SC	10	253	SL_MEE	4,788.80	CXI_351045*										
CXI_351060	Seismic Peer Review - CXI 0.1um SC	20	253	SL_MEE	2,394.40	CXI_351055*										
CXI_351065	Seismic Review Approval - CXI 0.1um SC	1	253	SL_MEE	478.88	CXI_351060*										
CXI_351070	COMP: Committee Approval - CXI 0.1um SC	0	253		0.00	CXI_351065*										

Activity ID	Activity Description	Orig Dur	Total Float	Resource ID	Budgeted Cost	Predecessors	FY08		FY09		FY10		FY11		FY12	
CXI_351075	Final Design - CXI 0.1um SC	25	169	SL_ME	13,591.20	CXI_351050*					▲ Final Design - CXI 0.1um SC					
CXI_351080	Generate Assy & Detail Dwgs - CXI 0.1um SC	80	169	SL_MD	57,162.00	CXI_351075*					▲ Generate Assy & Detail Dwgs - CXI 0.1um SC					
CXI_351085	Prep for FDR - CXI 0.1um SC	10	169	SL_MEE, SL_ME	9,431.04	CXI_351070, CXI_351080*					▲ Prep for FDR - CXI 0.1um SC					
CXI_351090	FDR - Final Design Review - CXI 0.1um SC	1	169	SL_ME, SL_MEE	969.20	CXI_351085*					▲ FDR - Final Design Review - CXI 0.1um SC					
CXI_351095	Incorp FDR Changes - CXI 0.1um SC	10	169	SL_ME	9,423.20	CXI_351090*					▲ Incorp FDR Changes - CXI 0.1um SC					
CXI_351100	Check & Approve Dwgs - CXI 0.1um SC	30	169	SL_MEE, SL_MD, SL_ME	55,041.70	CXI_351095*					▲ Check & Approve Dwgs - CXI 0.1um SC					
CXI_351105	Generate Mfg Docs - CXI 0.1um SC	20	169	SL_MEE	9,960.80	CXI_351100*					▲ Generate Mfg Docs - CXI 0.1um SC					
9100311 CXI Sample Chamber																
CXI 04720	START: CXI 1.0um Sample Chamber (SC)	0			0.00	CXI 02360	◆									
CXI 04740	Generate PRD - CXI 1.0um SC	15			0.00	CXI 04720	■									
CXI 04760	COMP: PRD Released - CXI 1.0um SC	0			0.00	CXI 04740	◆									
CXI 04820	Prelim Design - CXI 1.0um SC - Pre B/L	80		HIST_LBR	32,860.00	CXI 04760	■									
9110351 Design & Engr - CXI 1.0 micron Sample Chamber																
CXI 04780	Generate ESD - CXI 1.0um SC	132*	175	SL_ME, SL_MEE	16,997.55	CXI 04760	■									
CXI 04800	COMP: ESD Released - CXI 1.0um SC	0	175		0.00	CXI 04780*	◆									
CXI 04825	Prelim Design - CXI 1.0um SC - Post B/L	30	175	SL_ME, SL_MEE	32,052.70	CXI 04800*, CXI 04820, CXI 05600	▲									
CXI 04860	Controls Interface & Integ - CXI 1.0um SC	10	195	SL_CE	4,659.60	CXI 04825*	▲									
CXI 04880	Prelim Engr Analysis - CXI 1.0um SC	30	175	SL_MEE	13,813.20	CXI 04825*	▲									
CXI 04900	Prep for PDR - CXI 1.0um SC	10	175	SL_ME, SL_MEE	8,960.40	CXI 04860, CXI 04880*	▲									
CXI 04920	PDR - Prelim Design Review - CXI 1.0um SC	1	175	SL_MEE, SL_ME	896.04	CXI 04900*	▲									
CXI 04960	Final Engr Analysis - CXI 1.0um SC	30	175	SL_MEE	6,906.60	CXI 04920*	▲									
CXI 04980	Final Design - CXI 1.0um SC	25	175	SL_ME	10,890.00	CXI 04960*	▲									
CXI 05000	Generate Assy & Detail Dwgs - CXI 1.0um SC	80	175	SL_MD	52,675.75	CXI 04980*	▲									
CXI 05020	Prep for FDR - CXI 1.0um SC	10	175	SL_MEE, SL_ME	8,960.40	CXI 05000*	▲									
CXI 05040	FDR - Final Design Review - CXI 1.0um SC	1	175	SL_ME, SL_MEE	896.04	CXI 05020*, CXI 05075	▲									
CXI 05045	Incorp FDR Changes - CXI 1.0um SC	10	175	SL_ME	4,791.60	CXI 05040*	▲									
CXI 05050	Prep for Seismic Review - CXI 1.0um SC	10	218	SL_MEE	4,604.40	CXI 04960*	▲									
CXI 05055	Seismic Peer Review - CXI 1.0um SC	20	218	SL_MEE	2,302.20	CXI 05050*	▲									
CXI 05070	Seismic Review Approval - CXI 1.0um SC	1	218	SL_MEE	460.44	CXI 05055*	▲									
CXI 05075	COMP: Committee Approval - CXI 1.0um SC	0	218		0.00	CXI 05070*	◆									
CXI 05080	Check & Approve Dwgs - CXI 1.0um SC	5	175	SL_MD, SL_MEE, SL_ME	48,819.80	CXI 05045*	▲									
CXI 05085	Generate Mfg Docs - CXI 1.0um SC	20	175	SL_MEE	9,208.80	CXI 05080*	▲									

Activity ID	Activity Description	Orig Dur	Total Float	Resource ID	Budgeted Cost	Predecessors	FY08		FY09		FY10		FY11		FY12	
03 Procurement																
PRO_PP Procurement Planning Package																
CXI 65080	Procurement Preps - All Parts CXI Ion TOF	20	287		0.00	CXI 31360*										▲▲ Procurement Preps - All Parts CXI Ion TOF
CXI 65100	AWARD: PO - All Parts CXI Ion TOF	1	287	AWARD	31,956.62	CXI 65080*, PM003030										▲ AWARD: PO - All Parts CXI Ion TOF
CXI 65120	Vendor Effort - All Parts CXI Ion TOF	20	287	SL_MSEQ	32,836.16	CXI 65100*										▲ Vendor Effort - All Parts CXI Ion TOF
CXI 65140	RCV: All Parts CXI Ion TOF	0	287		0.00	CXI 65120*										◆ RCV: All Parts CXI Ion TOF
PRO_PP2 Procurement Planning Package 2																
CXI_351200	Procurement Preps - All Parts CXI 0.1um SC	30	172		0.00	CXI_351105*										▲▲ Procurement Preps - All Parts CXI 0.1um SC
CXI_351205	AWARD: PO - All Parts CXI 0.1um SC	1	172	AWARD	77,922.88	CXI_351200*, PM003030										▲ AWARD: PO - All Parts CXI 0.1um SC
CXI_351210	Vendor Effort - All Parts CXI 0.1um SC	40	172	SL_MSEQ	77,922.88	CXI_351205*										▲ Vendor Effort - All Parts CXI 0.1um SC
CXI_351215	RCV: All Parts CXI 0.1um SC	0	172		0.00	CXI_351210*										◆ RCV: All Parts CXI 0.1um SC
9110352 Procurement - CXI 1.0 micron Sample Chamber																
CXI 05960	Procurement Preps - All Parts CXI 1.0um SC	30	280		0.00	CXI 05085*										▲▲ Procurement Preps - All Parts CXI 1.0um SC
CXI 05980	AWARD: PO - All Parts CXI 1.0um SC	1	211	AWARD	246,906.80	CXI 05960, PM003030*										▲ AWARD: PO - All Parts CXI 1.0um SC
CXI 06000	Vendor Effort - All Parts CXI 1.0um SC	60	211	SL_MSEQ	246,906.80	CXI 05980*										▲ Vendor Effort - All Parts CXI 1.0um SC
CXI 06020	RCV: All Parts CXI 1.0um SC	0	211		0.00	CXI 06000*										◆ RCV: All Parts CXI 1.0um SC
04 Subcontract																
SUB_PP Subcon Planning Package																
CXI 06045	Prep Bid Pkg & App - Stgs/Ctrls CXI 1.0um SC	30	175		0.00	CXI 05085*										▲▲ Prep Bid Pkg & App - Stgs/Ctrls CXI 1.0um SC
CXI 06050	RELEASE: RFP - Stgs/Ctrls CXI 1.0um SC	0	175		0.00	CXI 06045*										◆ RELEASE: RFP - Stgs/Ctrls CXI 1.0um SC
CXI 06055	Vendor Proposal Effort - Stgs/Ctrls CXI 1.0um SC	20	175		0.00	CXI 06050*										▲ Vendor Proposal Effort - Stgs/Ctrls CXI 1.0um SC
CXI 06060	RCV: Vendor Proposals - Stgs/Ctrls CXI 1.0um SC	0	175		0.00	CXI 06055*										◆ RCV: Vendor Proposals - Stgs/Ctrls CXI 1.0um SC
CXI 06065	Eval & Selection Process-Stgs/Ctrls CXI 1.0um SC	15	175		0.00	CXI 06060*										▲ Eval & Selection Process-Stgs/Ctrls CXI 1.0um SC
CXI 06070	Vendor Selection - Stgs/Ctrls CXI 1.0um SC	0	175		0.00	CXI 06065*										◆ Vendor Selection - Stgs/Ctrls CXI 1.0um SC
CXI 06075	SLAC Approval Process - Stgs/Ctrls CXI 1.0um SC	5	175		0.00	CXI 06070*										▲ SLAC Approval Process - Stgs/Ctrls CXI 1.0um SC
CXI 06080	DOE Approval Process - Stgs/Ctrls CXI 1.0um SC	5	175		0.00	CXI 06075*										▲ DOE Approval Process - Stgs/Ctrls CXI 1.0um SC
CXI 06085	AWARD: Parts - Stgs/Ctrls CXI 1.0um SC	1	151	AWARD	128,271.20	CXI 06080, PM003030*										▲ AWARD: Parts - Stgs/Ctrls CXI 1.0um SC
CXI 06090	Vendor Effort - Stgs/Ctrls CXI 1.0um SC	120	151	SL_MSEQ	128,271.20	CXI 06085*										▲ Vendor Effort - Stgs/Ctrls CXI 1.0um SC
CXI 06095	RCV: Parts - Stgs/Ctrls CXI 1.0um SC	0	151		0.00	CXI 06090*										◆ RCV: Parts - Stgs/Ctrls CXI 1.0um SC
05 Fab / Assembly																
FAB_PP Fab & Assy Planning Package																
CXI 65150	Inspect Procured Parts - All Parts CXI Ion TOF	10	287	SL_AT, SL_SEE	1,192.07	CXI 65140*										▲ Inspect Procured Parts - All Parts CXI Ion TOF
CXI 65235	Submit Shop Orders - CXI Ion TOF	1	285	SL_MEE	957.76	CXI 31370*										▲ Submit Shop Orders - CXI Ion TOF
CXI 65240	Process MFD Input - CXI Ion TOF	10	285	SL_MF	4,958.40	CXI 65235*										▲ Process MFD Input - CXI Ion TOF

Activity ID	Activity Description	Orig Dur	Total Float	Resource ID	Budgeted Cost	Predecessors	FY08		FY09		FY10		FY11		FY12	
CXI 65260	Machining Processes - CXI Ion TOF	15	285	SL_MF	11,453.40	CXI 65240*										▲ Machining Processes - CXI Ion TOF
CXI 65265	Welding - CXI Ion TOF	5	285	SL_MF	3,093.84	CXI 65260*										▲ Welding - CXI Ion TOF
CXI 65270	RCV: Fab Parts CXI Ion TOF	0	285		0.00	CXI 65265*										◆ RCV: Fab Parts CXI Ion TOF
CXI 65300	Inspect Fab Parts - CXI Ion TOF	2	285	SL_AT, SL_SEE	1,073.70	CXI 65270*										▲ Inspect Fab Parts - CXI Ion TOF
CXI 65460	Clean - CXI Ion TOF	6	285	SL_MFPC	4,956.48	CXI 65150, CXI 65300*										▲ Clean - CXI Ion TOF
CXI 65480	Assemble Parts - CXI Ion TOF	10	285	SL_AT	2,510.88	CXI 65460*										▲ Assemble Parts - CXI Ion TOF
FAB_PP2 Fab & Assy Planning Package 2																
CXI_351250	Inspect Procured Parts - CXI 0.1um SC	5	172	SL_AT, SL_SEE	3,631.21	CXI_351215*										▲ Inspect Procured Parts - CXI 0.1um SC
CXI_351255	Submit Shop Orders - CXI 0.1um SC	1	169	SL_MEE	996.08	CXI_351105*										▲ Submit Shop Orders - CXI 0.1um SC
CXI_351260	Process MFD Input - CXI 0.1um SC	10	169	SL_MF	5,156.40	CXI_351255*										▲ Process MFD Input - CXI 0.1um SC
CXI_351265	Machining Processes - CXI 0.1um SC	60	169	SL_MF	54,915.66	CXI_351260*										▲ Machining Processes - CXI 0.1um SC
CXI_351270	RCV: Fab Parts CXI 0.1um SC	0	169		0.00	CXI_351265*										◆ RCV: Fab Parts CXI 0.1um SC
CXI_351275	Inspect Fab parts - CXI 0.1um SC	8	169	SL_AT	4,917.14	CXI_351270*										▲ Inspect Fab parts - CXI 0.1um SC
CXI_351280	Vacuum Leak Check - CXI 0.1um SC	10	169	SL_AT	6,277.20	CXI_351275*										▲ Vacuum Leak Check - CXI 0.1um SC
CXI_351285	Clean - CXI 0.1um SC	10	172	SL_MFPC	10,739.04	CXI_351250*										▲ Clean - CXI 0.1um SC
CXI_351286	REQD: CXI 1.0um SC	0	156		0.00	CXI 22105*										◆ REQD: CXI 1.0um SC
CXI_351288	Disassemble - CXI 1.0um SC	10	156	SL_AT, SL_CT	11,129.20	CXI_351286*										▲ Disassemble - CXI 1.0um SC
CXI_351290	Assemble Parts - CXI 0.1um SC	40	156	SL_AT	23,330.26	CXI_351280, CXI_351285, CXI_351288*, CXI_351289										▲ Assemble Parts - CXI 0.1um SC
CXI_351320	Alignment - CXI 0.1um SC	3	156	SL_MES	2,864.32	CXI_351290*										▲ Alignment - CXI 0.1um SC
9110353 Fab & Assembly - CXI 1.0 micron Sample Chamber																
CXI 06030	Inspect Procured Parts - CXI 1.0um SC	5	151	SL_SEE, SL_AT	3,491.46	CXI 06020, CXI 06095*										▲ Inspect Procured Parts - CXI 1.0um SC
CXI 06040	Submit Shop Orders - CXI 1.0um SC	1	297	SL_MEE	920.88	CXI 05085*										▲ Submit Shop Orders - CXI 1.0um SC
CXI 06105	Process MFD Input - CXI 1.0um SC	10	297	SL_MF	4,767.60	CXI 06040*										▲ Process MFD Input - CXI 1.0um SC
CXI 06110	Machining Processes - CXI 1.0um SC	60	297	SL_MF	51,892.55	CXI 06105*										▲ Machining Processes - CXI 1.0um SC
CXI 06145	RCV: Fab Parts CXI 1.0um SC	0	297		0.00	CXI 06110*										◆ RCV: Fab Parts CXI 1.0um SC
CXI 06155	Inspect Fab parts - CXI 1.0um SC	8	297	SL_AT	4,727.73	CXI 06145*										▲ Inspect Fab parts - CXI 1.0um SC
CXI 06160	Vacuum Leak Check - CXI 1.0um SC	10	297	SL_AT	6,035.40	CXI 06155*										▲ Vacuum Leak Check - CXI 1.0um SC
CXI 06200	Clean - CXI 1.0um SC	10	151	SL_MFPC	10,325.64	CXI 06030*										▲ Clean - CXI 1.0um SC
CXI 06220	Assemble Parts - CXI 1.0um SC	40	151	SL_AT	22,431.57	CXI 06160, CXI 06200*										▲ Assemble Parts - CXI 1.0um SC
CXI 06225	Alignment - CXI 1.0um SC	3	151	SL_MES	2,753.92	CXI 06220*										▲ Alignment - CXI 1.0um SC
06 Testing																
TST_PP Testing Planning Package																
CXI 65490	REQD: Ion TOF Controls HW & SW	0	285		0.00	CXI 65480*										◆ REQD: Ion TOF Controls HW & SW

Activity ID	Activity Description	Orig Dur	Total Float	Resource ID	Budgeted Cost	Predecessors	FY08		FY09		FY10		FY11		FY12	
CXI_65500	Final Test - CXI Ion TOF	4	285	SL_CT, SL_AT	1,940.80	CXI_65480*, CXI_65490*										Final Test - CXI Ion TOF
CXI_65520	AVAIL: Ready For Installation CXI Ion TOF	0	285		0.00	CXI_65500*										AVAIL: Ready For Installation CXI Ion TOF
TST_PP2 Testing Planning Package 2																
CXI_351300	REQD: CXI 0.1um SC Environ Controls HW & SW	0	381		0.00	CD_11460*, CD_11480*										REQD: CXI 0.1um SC Environ Controls HW & SW
CXI_351305	Final Test - CXI 0.1um SC	4	156	SL_CT, SL_AT	3,739.08	CXI_351300, CXI_351320*										Final Test - CXI 0.1um SC
CXI_351310	AVAIL: Ready For Install CXI 0.1um SC	0	156		0.00	CXI_351305*										AVAIL: Ready For Install CXI 0.1um SC
9110354 Testing - CXI 1.0 micron Sample Chamber																
CXI_06230	REQD: CXI 1.0um SC Environ Controls HW & SW	0	158		0.00	CD_11460*, CD_11480*										REQD: CXI 1.0um SC Environ Controls HW & SW
CXI_06280	Final Test - CXI 1.0um SC	4	151	SL_CT, SL_AT	3,595.32	CXI_06225*, CXI_06230										Final Test - CXI 1.0um SC
CXI_06300	AVAIL: Ready For Install CXI 1.0um SC	0	151		0.00	CXI_06280*										AVAIL: Ready For Install CXI 1.0um SC
1.3.05.01.02 CXI Precision Instrument Stands																
02 Design / Engineering																
ENG_PP2 Engineering Planning Package 2																
CXI_70000	START: CXI 0.1um Precision Instrument Stand	0	249		0.00	CXI_05120, CXI_05420*										START: CXI 0.1um Precision Instrument Stand
CXI_70010	Revise PRD - CXI 0.1um Prec Instr Std	15	249	SL_PHS	0.00	CXI_70000*										Revise PRD - CXI 0.1um Prec Instr Std
CXI_70020	COMP: PRD Released - CXI 0.1um Prec Instr Std	0	249		0.00	CXI_70010*										COMP: PRD Released - CXI 0.1um Prec Instr Std
CXI_70030	Revise ESD - CXI 0.1um Prec Instr Std	10	249	SL_MEE, SL_ME	5,727.60	CXI_351045, CXI_70000, CXI_70020*										Revise ESD - CXI 0.1um Prec Instr Std
CXI_70040	COMP: ESD Released - CXI 0.1um Prec Instr Std	0	274		0.00	CXI_70030*										COMP: ESD Released - CXI 0.1um Prec Instr Std
CXI_70050	Prelim Design - CXI 0.1um Prec Instr Std	30	249	SL_ME	18,121.60	CXI_70030*										Prelim Design - CXI 0.1um Prec Instr Std
CXI_70060	Prelim Engr Analysis - CXI 0.1um Prec Instr Std	20	249	SL_MEE	11,972.00	CXI_70040, CXI_70050*										Prelim Engr Analysis - CXI 0.1um Prec Instr Std
CXI_70070	Controls Interface & Integ - CXI 0.1um Prec Instr	4	265	SL_CE	969.20	CXI_70050*										Controls Interface & Integ - CXI 0.1um Prec Instr
CXI_70080	Prep for PDR - CXI 0.1um Prec Instr Std	5	249	SL_MEE, SL_ME	5,727.60	CXI_70050*, CXI_70060*, CXI_70070										Prep for PDR - CXI 0.1um Prec Instr Std
CXI_70090	PDR - Prelim Design Review - CXI 0.1um Prec Instr	1	249	SL_ME, SL_MEE	931.92	CXI_70080*										PDR - Prelim Design Review - CXI 0.1um Prec Instr
CXI_70100	Final Engr Analysis - CXI 0.1um Prec Instr Std	9	265	SL_MEE	7,183.20	CXI_70090*										Final Engr Analysis - CXI 0.1um Prec Instr Std
CXI_70110	Final Design - CXI 0.1um Prec Instr Std	12	265	SL_ME	9,060.80	CXI_70100*										Final Design - CXI 0.1um Prec Instr Std
CXI_70120	Generate Assy & Detail Dwgs-CXI 0.1um Prec Instr	25	265	SL_MD	16,195.90	CXI_70110*										Generate Assy & Detail Dwgs-CXI 0.1um Prec Instr
CXI_70130	Prep for FDR - CXI 0.1um Prec Instr Std	5	249	SL_MEE, SL_ME	5,727.60	CXI_70120, CXI_70180*										Prep for FDR - CXI 0.1um Prec Instr Std
CXI_70140	FDR - Final Design Review - CXI 0.1um Prec Instr	1	249	SL_ME, SL_MEE	931.92	CXI_70130*										FDR - Final Design Review - CXI 0.1um Prec Instr
CXI_70150	Prep for Seismic Review - CXI 0.1um Prec Instr	5	249	SL_MEE	2,873.28	CXI_70090*										Prep for Seismic Review - CXI 0.1um Prec Instr
CXI_70160	Seismic Peer Review - CXI 0.1um Prec Instr Std	20	249	SL_MEE	2,394.40	CXI_70150*										Seismic Peer Review - CXI 0.1um Prec Instr Std
CXI_70170	Seismic Review Approval - CXI 0.1um Prec Instr	1	249	SL_MEE	478.88	CXI_70160*										Seismic Review Approval - CXI 0.1um Prec Instr
CXI_70180	COMP: Committee Approval - CXI 0.1um Prec Instr	0	249		0.00	CXI_70170*										COMP: Committee Approval - CXI 0.1um Prec Instr
CXI_70190	Incorp FDR Changes - CXI 0.1um Prec Instr Std	6	249	SL_MD	3,810.80	CXI_70140*										Incorp FDR Changes - CXI 0.1um Prec Instr Std

Activity ID	Activity Description	Orig Dur	Total Float	Resource ID	Budgeted Cost	Predecessors	FY08		FY09		FY10		FY11		FY12	
CXI 06500	AWARD: PO - All Parts CXI 1.0um Prec Instr Std	1	134	AWARD	40,727.98	CXI 06480*, PM003030										
CXI 06520	Vendor Effort - All Parts CXI 1.0um Prec Instr	85	134	SL_MSEQ	40,727.98	CXI 06500*										
CXI 06540	RCV: All Parts CXI 1.0um Prec Instr Std	0	134		0.00	CXI 06520*										
05 Fab / Assembly																
FAB_PP Fab & Assy Planning Package																
CXI_70260	Inspect Procured Parts - CXI 0.1um Prec Instr St	10	249	SL_AT, SL_SEE	864.46	CXI_70250*										
CXI_70270	Submit Shop Orders - CXI 0.1um Prec Instr Std	1	256	SL_MEE	957.76	CXI_70210*										
CXI_70280	Process MFD Input - CXI 0.1um Prec Instr Std	10	256	SL_MF	5,156.40	CXI_70270*										
CXI_70290	Machining Processes - CXI 0.1um Prec Instr Std	70	256	SL_MF	51,564.00	CXI_70280*										
CXI_70300	Welding - CXI 0.1um Prec Instr Std	15	256	SL_MF	10,312.80	CXI_70290*										
CXI_70310	RCV: Fab Parts CXI 0.1um Prec Instr Std	0	256		0.00	CXI_70300*										
CXI_70320	Inspect Fab Parts - CXI 0.1um Prec Instr Std	3	256	SL_AT	1,883.16	CXI_70310*										
CXI_70330	Assemble Parts - CXI 0.1um Prec Instr Std	10	249	SL_CT, SL_AT	10,025.36	CXI_70260*, CXI_70320										
9110357 Fab & Assembly - CXI 1.0 micron Prec Instr Std																
CXI 06600	Inspect Procured Parts - CXI 1.0um Prec Instr St	10	134	SL_AT, SL_SEE	831.18	CXI 06540*										
CXI 06605	Submit Shop Orders - CXI 1.0um Prec Instr Std	1	141	SL_MEE	957.76	CXI 05475*										
CXI 06610	Process MFD Input - CXI 1.0um Prec Instr Std	10	141	SL_MF	4,958.40	CXI 06605*										
CXI 06620	Machining Processes - CXI 1.0um Prec Instr Std	70	141	SL_MF	49,584.00	CXI 06610*										
CXI 06625	Welding - CXI 1.0um Prec Instr Std	15	141	SL_MF	9,916.80	CXI 06620*										
CXI 06630	RCV: Fab Parts CXI 1.0um Prec Instr Std	0	141		0.00	CXI 06625*										
CXI 06660	Inspect Fab Parts - CXI 1.0um Prec Instr Std	3	141	SL_AT	1,810.62	CXI 06630*										
CXI 06720	Assemble Parts - CXI 1.0um Prec Instr Std	10	134	SL_AT, SL_CT	9,909.56	CXI 06600*, CXI 06660										
06 Testing																
TST_PP Testing Planning Package																
CXI_70340	Final Test - CXI 0.1um Prec Instr Std	5	249	SL_CT, SL_AT	3,115.90	CXI_70330*										
CXI_70350	AVAIL: CXI 0.1um Prec Inst Ready For Install	0	249		0.00	CXI_70340*										
9110358 Testing - CXI 1.0 micron Prec Instr Std																
CXI 06760	Final Test - CXI 1.0um Prec Instr Std	5	134	SL_CT, SL_AT	3,115.90	CXI 06720*										
CXI 06780	AVAIL: CXI 1.0um Prec Inst Ready For Install	0	134		0.00	CXI 06760*										
1.3.05.01.03 CXI Detector Stage																
02 Design / Engineering																
9110359 Design & Engr - CXI Detector Stage																
CXI 05500	START: CXI Detector Stage	0			0.00	CXI 01065										
CXI 05520	Generate PRD - CXI Detector Stage	122			0.00	CXI 05500										

Activity ID	Activity Description	Orig Dur	Total Float	Resource ID	Budgeted Cost	Predecessors	FY08												FY09												FY10												FY11												FY12											
CXI 05540	COMP: PRD Released - CXI Detector Stage	0			0.00	CXI 05520	◆ COMP: PRD Released - CXI Detector Stage																																																											
CXI 05560	Generate ESD - CXI Detector Stage	110*	197	SL_MEE, SL_ME	6,402.00	CXI 05540	▲ Generate ESD - CXI Detector Stage																																																											
CXI 05580	COMP: ESD Released - CXI Detector Stage	0	197		0.00	CXI 05560*	◆ COMP: ESD Released - CXI Detector Stage																																																											
CXI 05600	Prelim Design - CXI Detector Stage	30	197	SL_ME	20,942.00	CXI 05540, CXI 05560, CXI 05580*	▲ Prelim Design - CXI Detector Stage																																																											
CXI 05620	Controls Interface & Integ - CXI Detector Stage	4	388	SL_CE	2,688.24	CXI 05600*	▲ Controls Interface & Integ - CXI Detector Stage																																																											
CXI 05640	Prelim Engr Analysis - CXI Detector Stage	12	372	SL_MEE	8,854.40	CXI 05580*, CXI 05600	▲ Prelim Engr Analysis - CXI Detector Stage																																																											
CXI 05660	Prep for PDR - CXI Detector Stage	5	372	SL_MEE, SL_ME	5,295.20	CXI 05600*, CXI 05620, CXI 05640*	▲ Prep for PDR - CXI Detector Stage																																																											
CXI 05680	PDR - Prelim Design Review - CXI Detector Stage	1	372	SL_ME, SL_MEE	861.56	CXI 05660*	▲ PDR - Prelim Design Review - CXI Detector Stage																																																											
CXI 05720	Final Engr Analysis - CXI Detector Stage	5	372	SL_MEE	4,427.20	CXI 05680*	▲ Final Engr Analysis - CXI Detector Stage																																																											
CXI 05740	Final Design - CXI Detector Stage	25	300	SL_ME	4,356.00	CXI 05710*, CXI 05720	▲ Final Design - CXI Detector Stage																																																											
CXI 05760	Generate Assy & Detail Dwgs - CXI Detector Stage	50	305	SL_MD	27,483.00	CXI 05740*	▲ Generate Assy & Detail Dwgs - CXI Detector Stage																																																											
CXI 05780	Prep for FDR - CXI Detector Stage	5	305	SL_MEE, SL_ME	5,507.10	CXI 05760*	▲ Prep for FDR - CXI Detector Stage																																																											
CXI 05800	FDR - Final Design Review - CXI Detector Stage	1	300	SL_ME, SL_MEE	896.04	CXI 05780, CXI 05835*	▲ FDR - Final Design Review - CXI Detector Stage																																																											
CXI 05820	Incorp FDR Changes - CXI Detector Stage	5	300	SL_MD	3,664.40	CXI 05800*	▲ Incorp FDR Changes - CXI Detector Stage																																																											
CXI 05825	Prep for Seismic Review - CXI Detector Stage	10	300	SL_MEE	2,762.64	CXI 05720, CXI 05740*	▲ Prep for Seismic Review - CXI Detector Stage																																																											
CXI 05830	Seismic Peer Review - CXI Detector Stage	20	300	SL_MEE	2,302.20	CXI 05825*	▲ Seismic Peer Review - CXI Detector Stage																																																											
CXI 05832	Seismic Review Approval - CXI Detector Stage	1	300	SL_MEE	460.44	CXI 05830*	▲ Seismic Review Approval - CXI Detector Stage																																																											
CXI 05835	COMP: Committee Approval - CXI Detector Stage	0	300		0.00	CXI 05832*	◆ COMP: Committee Approval - CXI Detector Stage																																																											
CXI 05840	Check & Approve Dwgs - CXI Detector Stage	5	300	SL_MD, SL_MEE, SL_ME	25,471.20	CXI 05820*	▲ Check & Approve Dwgs - CXI Detector Stage																																																											
CXI 05850	Generate Mfg Docs - CXI Detector Stage	20	349	SL_MEE	9,208.80	CXI 05840*	▲ Generate Mfg Docs - CXI Detector Stage																																																											
03 Procurement																																																																		
9110360 Procurement - CXI Detector Stage																																																																		
CXI 06880	Procurement Preps - Vdr Parts CXI Detector Stage	30	300		0.00	CXI 05840*	▲ Procurement Preps - Vdr Parts CXI Detector Stage																																																											
CXI 06900	AWARD: PO - All Vdr Parts CXI Detector Stage	1	178	AWARD	107,651.67	CXI 06880, PM003030*	▲ AWARD: PO - All Vdr Parts CXI Detector Stage																																																											
CXI 06920	Vendor Fab - All Vdr Parts CXI Detector Stage	120	178	SL_MSEQ	107,651.67	CXI 06900*	▲ Vendor Fab - All Vdr Parts CXI Detector Stage																																																											
CXI 06930	RCV: All Vendor Parts CXI Detector Stage	0	178		0.00	CXI 06920*	◆ RCV: All Vendor Parts CXI Detector Stage																																																											
05 Fab / Assembly																																																																		
9110361 Fab & Assembly - CXI Detector Stage																																																																		
CXI 06932	Inspect Procured Parts-All CXI Detector Stage	2	178	SL_AT, SL_SEE	1,601.46	CXI 06930*	▲ Inspect Procured Parts-All CXI Detector Stage																																																											
CXI 06934	Submit Shop Orders - CXI Detector Stage	1	217	SL_MEE	957.76	CXI 05850, PM003030*	▲ Submit Shop Orders - CXI Detector Stage																																																											
CXI 06935	Process MFD Input - CXI Detector Stage	10	217	SL_MF	4,958.40	CXI 06934*	▲ Process MFD Input - CXI Detector Stage																																																											
CXI 06940	Machining Processes - CXI Detector Stage	50	217	SL_MF	33,469.20	CXI 06935*	▲ Machining Processes - CXI Detector Stage																																																											
CXI 06945	Welding - CXI Detector Stage	8	217	SL_MF	6,198.00	CXI 06940*	▲ Welding - CXI Detector Stage																																																											

Activity ID	Activity Description	Orig Dur	Total Float	Resource ID	Budgeted Cost	Predecessors	FY08		FY09		FY10		FY11		FY12	
CXI 08170	COMP: CXI Hutch Layout	0	235		0.00	CXI 08150*					◆ COMP: CXI Hutch Layout					
1.3.06.02 CXI Utilities & Hutch Equipment																
02 Design / Engineering																
ENG_PP Engineering Planning Package																
CXI 59000	START: CXI Utilities Design Phase	0	129		0.00	CXI 08140*					◆ START: CXI Utilities Design Phase					
CXI 60000	Design - CXI Compressed Air/Water Distribution	20	181	SL_MEE	4,604.40	CXI 59000*					▲ Design - CXI Compressed Air/Water Distribution					
CXI 60020	Detail Drawings - CXI Compressed AirWater Distri	20	291	SL_MDD	3,452.00	CXI 60000*					▲ Detail Drawings - CXI Compressed AirWater Distri					
CXI 60030	Check & Approve Dwgs - CXI Compr AirWater Distri	3	291	SL_MEE, SL_MDD	3,453.04	CXI 60020*					✗ Check & Approve Dwgs - CXI Compr AirWater Distri					
CXI 60040	Design - CXI Gas Distribution/Cabinet	20	181	SL_MEE	4,604.40	CXI 59000, CXI 60000*					▲ Design - CXI Gas Distribution/Cabinet					
CXI 60060	Detail Drawings - CXI Gas Distribution/Cabinet	20	291	SL_MDD	3,452.00	CXI 60040*					▲ Detail Drawings - CXI Gas Distribution/Cabinet					
CXI 60070	Check & Approve Dwgs - CXI Gas Distribution/Cabi	3	291	SL_MEE, SL_MDD	3,453.04	CXI 60060*					✗ Check & Approve Dwgs - CXI Gas Distribution/Cabi					
CXI 60080	Design - CXI Power to racks	40	181	SL_EE	15,372.80	CXI 59000, CXI 60040*					▲ Design - CXI Power to racks					
CXI 60100	Detail Drawings-CXI Power to racks	30	235	SL_MDD	10,356.00	CXI 60080*					▲ Detail Drawings-CXI Power to racks					
CXI 60105	Check & Approve Dwgs - CXI Power to racks	9	235	SL_MEE, SL_MDD	10,359.12	CXI 60100*					▲ Check & Approve Dwgs - CXI Power to racks					
CXI 60110	Design - CXI Water to racks	20	181	SL_MEE	9,208.80	CXI 60080*					▲ Design - CXI Water to racks					
CXI 60115	Detail Drawings-CXI Water to racks	10	221	SL_MDD	3,452.00	CXI 60110*					▲ Detail Drawings-CXI Water to racks					
CXI 60118	Check & Approve Dwgs - CXI Water to racks	3	221	SL_MEE, SL_MDD	3,453.04	CXI 60115*					✗ Check & Approve Dwgs - CXI Water to racks					
CXI 60120	Design - CXI Hutch Cabinets	5	181	SL_MEE	1,151.10	CXI 59000, CXI 60110*					✗ Design - CXI Hutch Cabinets					
CXI 60140	Detail Drawings - CXI Hutch Cabinets	5	197	SL_MDD	1,726.00	CXI 60120*					✗ Detail Drawings - CXI Hutch Cabinets					
CXI 60150	Check & Approve Dwgs - CXI Hutch Cabinets	2	197	SL_MEE, SL_MDD	1,726.52	CXI 60140*					✗ Check & Approve Dwgs - CXI Hutch Cabinets					
CXI 60160	Design - Drop Floor	10	181	SL_MEE	4,604.40	CXI 59000, CXI 60120*					▲ Design - Drop Floor					
CXI 60180	Detail Drawings - Drop Floor	20	181	SL_MDD	8,284.80	CXI 60160*					▲ Detail Drawings - Drop Floor					
CXI 60190	Check & Approve Dwgs - Drop Floor	8	181	SL_MEE, SL_MDD	8,200.97	CXI 60180*					✗ Check & Approve Dwgs - Drop Floor					
CXI 60200	Design - Instrument Cable Tray	10	195	SL_MEE	4,604.40	CXI 59000, CXI 60160*					▲ Design - Instrument Cable Tray					
CXI 60220	Detail Drawings - Instrument Cable Tray	15	195	SL_MDD	4,142.40	CXI 60200*					▲ Detail Drawings - Instrument Cable Tray					
CXI 60230	Check & Approve Dwgs - Instrument Cable Tray	4	195	SL_MEE, SL_MDD	4,316.30	CXI 60220*					✗ Check & Approve Dwgs - Instrument Cable Tray					
CXI 60300	Design & Layout - CXI Crane	20	129	SL_MEE	9,208.80	CXI 59000*					▲ Design & Layout - CXI Crane					
CXI 60310	Prep for Seismic Review - CXI Crane	20	129	SL_MEE	9,208.80	CXI 60300*					▲ Prep for Seismic Review - CXI Crane					
CXI 60320	Seismic Peer Review- CXI Crane	20	129	SL_MEE	4,604.40	CXI 60310*					▲ Seismic Peer Review- CXI Crane					
CXI 60330	Seismic Review Approval - CXI Crane	1	129	SL_MEE	460.44	CXI 60320*					✗ Seismic Review Approval - CXI Crane					
CXI 60340	COMP: Committee Approval - CXI Crane	0	129		0.00	CXI 60330*					◆ COMP: Committee Approval - CXI Crane					
CXI 60350	Detail Drawings - CXI Crane	25	129	SL_MDD	8,284.80	CXI 60340*					▲ Detail Drawings - CXI Crane					

Activity ID	Activity Description	Orig Dur	Total Float	Resource ID	Budgeted Cost	Predecessors	FY08		FY09		FY10		FY11		FY12		
05 Fab / Assembly																	
9110376 Fab & Assembly - CXI Spools & Bellows																	
CXI 09350	Inspect Procured Parts - CXI Bellows	2	226	SL_AT	1,609.44	CXI 09340*											
CXI 09360	Submit Shop Orders - CXI Bellows	1	258	SL_MEE	957.76	CXI 59185, PM003030*											
CXI 09370	Process MFD Inputs - CXI Bellows	10	226	SL_MF	4,958.40	CXI 09350*, CXI 09360											
CXI 09380	Machining Processes - CXI Bellows	8	226	SL_MF	4,958.40	CXI 09370*											
CXI 09390	Welding - CXI Bellows	10	226	SL_MF	4,958.40	CXI 09380*											
CXI 09430	Inspect Fab Parts - CXI Bellows	3	226	SL_MF	1,983.36	CXI 09390*											
CXI 09435	Clean Fire - CXI Bellows	10	226	SL_MSEG	6,540.00	CXI 09430*											
CXI 09440	Vacuum Process - CXI Bellows	4	226	SL_AT	1,609.44	CXI 09435*											
CXI 09480	AVAIL: CXI Bellows Ready For Installation	0	226		0.00	CXI 09440*											
CXI 60600	Inspect Procured Parts - CXI Spools Parts	2	281	SL_AT	1,609.44	CXI 60580*											
CXI 60603	Submit Shop Orders - CXI Spools	1	253	SL_MEE	957.76	CXI 59185, PM003030*											
CXI 60605	Process MFD Input - CXI Spools Fab Parts	10	233	SL_MF	4,958.40	CXI 60580*, CXI 60603											
CXI 60625	Machining Processes - CXI Spools	10	233	SL_MF	4,958.40	CXI 60605*											
CXI 60627	Welding - CXI Spools	10	233	SL_MF	4,958.40	CXI 60625*											
CXI 60629	Inspect Fab Parts - CXI Spools	4	233	SL_AT	1,609.44	CXI 60627*											
CXI 60631	Clean - CXI Spools	4	233	SL_MFPC	4,765.68	CXI 60629*											
CXI 60632	Assemble - CXI Spools	4	233	SL_MFPC	4,765.68	CXI 60631*											
CXI 60633	Vacuum Process - CXI Spools	8	233	SL_AT	4,023.60	CXI 60631, CXI 60632*											
CXI 60720	AVAIL: CXI Spools Ready For Installation	0	233		0.00	CXI 60600, CXI 60633*											
1.3.07.02.02 CXI Vacuum Supports																	
02 Design / Engineering																	
9110377 Design & Engr - CXI Vacuum Supports																	
CXI 59285	Prelim Design - CXI Vacuum Supports	30	235	SL_ME	20,037.60	CXI 59030*											
CXI 59287	Prelim Engr Analysis - CXI Vacuum Supports	20	235	SL_MEE	9,208.80	CXI 59285*											
CXI 59288	Prelim Design - Hi Res Profile Monitor Stand	8	306	SL_ME	4,356.00	CXI 59030*											
CXI 59289	Prelim Engr Analysis - Hi Res Profile Mon Stand	10	306	SL_MEE	4,604.40	CXI 59288*											
CXI 59290	Prep for PDR - CXI Vacuum Supports	5	235	SL_MEE, SL_ME	5,507.10	CXI 59287*											
CXI 59310	PDR - Prelim Design Review - CXI Vacuum Supports	1	235	SL_MEE, SL_ME	896.04	CXI 59290*											
CXI 59340	Final Engr Analysis - CXI Vacuum Supports	8	235	SL_MEE	4,604.40	CXI 59310*											
CXI 59350	Final Design - CXI Vacuum Supports	10	249	SL_ME	7,405.20	CXI 59340*											
CXI 59360	Generate Detail Drawings - CXI Vacuum Supports	30	249	SL_MD	20,612.25	CXI 59350*											

Activity ID	Activity Description	Orig Dur	Total Float	Resource ID	Budgeted Cost	Predecessors	FY08		FY09		FY10		FY11		FY12	
CXI 59370	Prep for FDR - CXI Vacuum Supports	6	249	SL_ME, SL_MEE	5,507.10	CXI 59360*, CXI 59385					▲ Prep for FDR - CXI Vacuum Supports					
CXI 59375	Final Engr Analysis - Hi Res Profile Monitor Std	5	306	SL_MEE	2,302.20	CXI 59289*					▲ Final Engr Analysis - Hi Res Profile Monitor Std					
CXI 59380	Final Design - Hi Res Profile Monitor Stand	4	306	SL_ME	1,742.40	CXI 59375*					▲ Final Design - Hi Res Profile Monitor Stand					
CXI 59385	Generate Detail Dwgs-Hi Res Profile Monitor Std	20	306	SL_MD	10,993.20	CXI 59380*					▲ Generate Detail Dwgs-Hi Res Profile Monitor Std					
CXI 59390	FDR - Final Design Review - Vacuum Supports	1	235	SL_ME, SL_MEE	896.04	CXI 59370, CXI 59418*					▲ FDR - Final Design Review - Vacuum Supports					
CXI 59410	Incorp FDR Changes - Supports & Stand	5	235	SL_MD	1,465.76	CXI 59390*					▲ Incorp FDR Changes - Supports & Stand					
CXI 59412	Prep for Seismic Review - CXi Vacuum Supports	10	235	SL_MEE	2,762.64	CXI 59340*					▲ Prep for Seismic Review - CXi Vacuum Supports					
CXI 59414	Seismic Peer Review - CXI Vacuum Supt	20	235	SL_MEE	2,302.20	CXI 59412*					▲ Seismic Peer Review - CXI Vacuum Supt					
CXI 59416	Seismic Review Approval - CXI Vacuum Supt	1	235	SL_MEE	460.44	CXI 59414*					▲ Seismic Review Approval - CXI Vacuum Supt					
CXI 59418	COMP: Committee Approval - CXI Vacuum Support	0	235		0.00	CXI 59416*					◆ COMP: Committee Approval - CXI Vacuum Support					
CXI 59420	Check & Approve Dwgs - CXI Vacuum Supports	9	235	SL_MEE, SL_MD, SL_ME	29,291.88	CXI 59410*					▲ Check & Approve Dwgs - CXI Vacuum Supports					
03 Procurement																
9110378 Procurement - CXI Vacuum Supports																
CXI 60900	Procurement Preps - CXI Vacuum Supports & Stand	10	295		0.00	CXI 59420*					▲ Procurement Preps - CXI Vacuum Supports & Stand					
CXI 60920	AWARD: PO - CXI Vacuum Supports & Stand	1	228	AWARD	50,042.99	CXI 60900, PM003030*					▲ AWARD: PO - CXI Vacuum Supports & Stand					
CXI 60940	Vendor Effort - CXI Vacuum Supports & Stand	20	228	SL_MSEG	50,042.99	CXI 60920*					▲ Vendor Effort - CXI Vacuum Supports & Stand					
CXI 60960	RCV: CXI Vacuum Supports & Stand	0	228		0.00	CXI 60940*					◆ RCV: CXI Vacuum Supports & Stand					
05 Fab / Assembly																
9110379 Fab & Assembly - CXI Vacuum Supports																
CXI 60980	Inspect Procured Parts - CXI Vacuum Support	3	228	SL_AT	2,011.80	CXI 60960*					▲ Inspect Procured Parts - CXI Vacuum Support					
CXI 60990	Submit Shop Orders - CXI Vacuum Supports	1	158	SL_MEE	957.76	CXI 59420, PM003030*					▲ Submit Shop Orders - CXI Vacuum Supports					
CXI 61000	Process MFD Input - CXI Vacuum Support Fab Parts	10	158	SL_MF	4,958.40	CXI 60990*					▲ Process MFD Input - CXI Vacuum Support Fab Parts					
CXI 61020	Machining Processes - CXI Vacuum Supports	40	158	SL_MF	24,792.00	CXI 61000*					▲ Machining Processes - CXI Vacuum Supports					
CXI 61030	Welding - CXI Vacuum Supports	40	158	SL_MF	24,792.00	CXI 61020*					▲ Welding - CXI Vacuum Supports					
CXI 61060	Inspect Fab Parts - CXI Vacuum Supports	3	158	SL_AT	2,011.80	CXI 61030*					▲ Inspect Fab Parts - CXI Vacuum Supports					
CXI 61070	Assemble - CXI Vacuum Supports	20	158	SL_AT	8,047.20	CXI 60980, CXI 61060*					▲ Assemble - CXI Vacuum Supports					
CXI 61140	AVAIL: CXI Vacuum Supports Ready For Install	0	158		0.00	CXI 60980, CXI 61060, CXI 61070*					◆ AVAIL: CXI Vacuum Supports Ready For Install					
1.3.08.01 CXI Installation Phase																
05 Fab / Assembly																
FAB_PP2 Fab & Assy Planning Package 2																
CXI_351289	REQD: CXI Ion TOF	0	285		0.00	CXI 65520*					◆ REQD: CXI Ion TOF					
07 Installation																
9110382 CXI Installation																
CXI 09735	Procurement Preps - CD4b Installation Contracts	100	206	SL_SEE	9,105.60	CXI 09980, PM300105*					▲ Procurement Preps - CD4b Installation Contracts					

Activity ID	Activity Description	Orig Dur	Total Float	Resource ID	Budgeted Cost	Predecessors	FY08			FY09			FY10			FY11			FY12			
CXI 09740	START: CXI CD4b Installation	0	235		0.00	CXI 08170*, CXI 09980							◆ START: CXI CD4b Installation									
CXI 09760	REQD: CXI Beamline Assembly/Installation Drawing	0	206		0.00	CXI 09735*							◆ REQD: CXI Beamline Assembly/Installation Drawing									
CXI 09860	Prep for Installation Readiness Review- CXI Inst	10	206	SL_PHS, SL_MEE	12,447.00	CXI 09760*							▲ Prep for Installation Readiness Review- CXI Inst									
CXI 09880	Installation Readiness Review - CXI Instrument	0	206		0.00	CXI 09860*							◆ Installation Readiness Review - CXI Instrument									
CXI 09900	Prep For CXI Installation Work Planning Review	20	206	SL_MEE	9,577.60	CXI 09880*							▲ Prep For CXI Installation Work Planning Review									
CXI 09920	CXI Installation Work Planning Review	0	206		0.00	CXI 09900*							◆ CXI Installation Work Planning Review									
CXI 09940	CXI Instrument Installation Coordination Mtgs	20	206	SL_MEE	9,577.60	CXI 09860, CXI 09900*, CXI 09920*							▲ CXI Instrument Installation Coordination Mtgs									
CXI 09960	COMP: CXI Instrument Install Coordination Mtg	0	206		0.00	CXI 09940*							◆ COMP: CXI Instrument Install Coordination Mtg									
CXI 09970	Engineering Installation Oversight - CXI CD4b	341*	95	SL_MEE	161,600.04	CXI 09740*							▲ Engineering Installation Oversight - CXI CD4b									
CXI 09975	Installation Project Mgr Oversight - CXI CD-4b	341*	95	SL_SEE	20,761.40	CXI 09740*							▲ Installation Project Mgr Oversight - CXI CD-4b									
CXI 09980	REQD: FEH H5 Certificate of Beneficial Occupancy	0	216		0.00								◆ REQD: FEH H5 Certificate of Beneficial Occupancy									
CXI 09985	REQD: Access to XRT	0	235		0.00	CXI 09740*							◆ REQD: Access to XRT									
CXI 09990	REQD: All Utilities/Electrical Hardware	0	125		0.00	CXI 08620, CXI 08660, CXI 08780, CXI 09980, CXI 62060*, CXI 62140*							◆ REQD: All Utilities/Electrical Hardware									
CXI 10000	REQD: CXI Cables and Racks	0	125		0.00	CD 07960*, CXI 08500, CXI 08540, CXI 08580							◆ REQD: CXI Cables and Racks									
CXI 10003	Transport and Install CXI Cables and Racks	3	165	SL_CT, SL_TMUIO	3,493.92	CXI 10000*, CXI 10140							▲ Transport and Install CXI Cables and Racks									
CXI 10005	Procure Preps - Install Pwr to Racks & Equip, H5	30	258		0.00	CXI 60105, PM300105*							▲ Procure Preps - Install Pwr to Racks & Equip, H5									
CXI 10010	AWARD: PO - Install Power to Racks & Equip, H5	1	228	AWARD	24,933.19	CXI 10005, PM003030*							▲ AWARD: PO - Install Power to Racks & Equip, H5									
CXI 10015	Vendor Effort - Install Pwr to Racks & Equip, H5	30	165	SL_MSEG, SL_UTR	31,762.39	CXI 10000, CXI 10003*, CXI 10010							▲ Vendor Effort - Install Pwr to Racks & Equip, H5									
CXI 10020	COMP: Install CXI Power to Racks & Equipment, H5	0	165		0.00	CXI 10015*							◆ COMP: Install CXI Power to Racks & Equipment, H5									
CXI 10022	Transportation of Crane to FEH H5	1	124	SL_TMUIO	2,570.70	CXI 08630*, CXI 08740							▲ Transportation of Crane to FEH H5									
CXI 10025	Procure Preps - Install FEH H5 Crane	30	200		0.00	CXI 08670*, CXI 60340							▲ Procure Preps - Install FEH H5 Crane									
CXI 10030	AWARD: PO - CXI Install FEH H5 Crane	1	155	AWARD	7,207.63	CXI 10025, PM003030*							▲ AWARD: PO - CXI Install FEH H5 Crane									
CXI 10035	Vendor Effort - CXI Install FEH H5 Crane	10	124	SL_MSEG, SL_UTR	9,484.03	CXI 09980, CXI 10022*, CXI 10030							▲ Vendor Effort - CXI Install FEH H5 Crane									
CXI 10040	COMP: CXI Install FEH H5 Crane	0	124		0.00	CXI 10035*							◆ COMP: CXI Install FEH H5 Crane									
CXI 10045	FEH H5 Crane Certification	20	124		0.00	CXI 10040*							▲ FEH H5 Crane Certification									
CXI 10055	AVAIL: FEH H5 Crane Ready for Operation	0	124		0.00	CXI 10045*							◆ AVAIL: FEH H5 Crane Ready for Operation									
CXI 10058	Install CXI Cable Trays	10	124	SL_TMUIE	16,590.40	CXI 09990, CXI 10000, CXI 10055*							▲ Install CXI Cable Trays									
CXI 10059	Install controls/interlocks in XRT/FEH H5	30	124	SL_AT, SL_CT	27,992.40	CXI 10058*							▲ Install controls/interlocks in XRT/FEH H5									
CXI 10060	Install Compress Gases/H2O Distribut in FEH H5	25	124	SL_AT	44,661.96	CXI 10059*							▲ Install Compress Gases/H2O Distribut in FEH H5									
CXI 10070	Install H2O to Racks	8	124	SL_TMUP	11,122.72	CXI 10060*							▲ Install H2O to Racks									
CXI 10120	Test Power/Compressed Gases/Water	13	124	SL_AT, SL_TMUIE	7,341.68	CXI 10020, CXI 10060, CXI 10070*							▲ Test Power/Compressed Gases/Water									
CXI 10130	Pre-installation survey/marketing of XRT/FEH H5	15	206	SL_MES	20,654.40	CXI 09960*, CXI 09980, CXI 09985							▲ Pre-installation survey/marketing of XRT/FEH H5									

Activity ID	Activity Description	Orig Dur	Total Float	Resource ID	Budgeted Cost	Predecessors	FY08		FY09		FY10		FY11		FY12	
CXI 10400	Functional Checks - FEH H5 Diag/Cm Optics	3	118	SL_CT, SL_AT, SL_PHS	5,822.40	CXI 10395*										
CXI 10405	Ready For Connection to CXI 1.0um KB Mirror Syst	0	118		0.00	CXI 10400*										
CXI 10410	START: CXI 1.0um KB Install	0	118		0.00	CXI 10405*										
CXI 10413	REQD: CXI 1.0um KB Mirror System	0	117		0.00	CXI 03200*										
CXI 10415	Transport CXI 1.0um KB Mirror System	1	117	SL_TMUC	1,425.92	CXI 10410, CXI 10413*										
CXI 10420	Install CXI 1.0um KB with Vendor Support	10	117	SL_AT, SL_UTR	9,553.30	CXI 10415*										
CXI 10430	Connect CXI 1.0um KB to FEH H5 Diag/Cm Optics	2	117	SL_AT	3,347.84	CXI 10420*										
CXI 10433	Preliminary Alignment - CXI 1.0um KB	2	117	SL_MES	2,864.32	CXI 10430*										
CXI 10435	Pump & Leak Check	2	117	SL_AT	3,347.84	CXI 10433*										
CXI 10445	Final Alignment of CXI 1.0um KB	2	117	SL_MES	1,432.16	CXI 10435*										
CXI 10450	REQD: CXI Valve Controls HW & SW	0	285		0.00	CD 09338*, CD 09340*										
CXI 10451	REQD: CXI Vacuum Controls HW & SW	0	264		0.00	CD 09368*, CD 09370*										
CXI 10453	Connect Power/Ctrls/Interlocks	3	117	SL_CT	3,311.52	CXI 10445*, CXI 10450, CXI 10451										
CXI 10455	Controls/Interlocks Checks	5	117	SL_CT	3,311.52	CXI 10450, CXI 10451, CXI 10453*										
CXI 10460	Functional Checks - 1um KB w/ Vendor	10	117	SL_AT, SL_PHS, SL_CT	6,944.40	CXI 10455*										
CXI 10465	CXI 1.0um KB Ready For Connection to SC	0	117		0.00	CXI 10460*										
CXI 10471	REQD: CXI 1.0um SC	0	151		0.00	CXI 06300*										
CXI 10472	REQD: CXI 1.0um Precision Instrument Stand	0	134		0.00	CXI 06780*										
CXI 10473	REQD: Detector Stage	0	178		0.00	CXI 07220*										
CXI 10475	Trans 1.0um SC/Prec Inst Std/Det Stg For Install	2	134	SL_TMUC	2,851.84	CXI 10471, CXI 10472*, CXI 10473										
CXI 10480	Install CXI 1.0um Precision Instrument Stand	1	134	SL_AT	1,673.92	CXI 10475*										
CXI 10485	Preliminary Alignment - CXI 1.0um Prec Instr Std	2	134	SL_MES	2,864.32	CXI 10480*										
CXI 10490	Grout CXI 1.0um Precision Instrument Std	1	134	SL_UTR, SL_TMUC	1,575.14	CXI 10485*										
CXI 10492	Install CXI 1.0um SC	5	134	SL_AT	8,369.60	CXI 10490*										
CXI 10600	REQD: Injector RFI	0	245		0.00	CXI 40730*										
CXI 10610	REQD: Partical Injector Controls	0	355		0.00	CD 11660*, CD 11680*										
CXI 10650	Preliminary Alignment - CXI 1.0um SC	2	134	SL_MES	2,864.32	CXI 10492*										
CXI 10660	Install Detector Stage	2	134	SL_CT, SL_AT	2,777.76	CXI 10650*										
CXI 10670	Compl. Vac Connects 1.0um SC to Diag/Comm Optic	2	136	SL_AT	3,347.84	CXI 10650*										
CXI 10700	Compl. Vacuum Connects 1.0um SC to Detector Stg	2	134	SL_AT	3,347.84	CXI 10650, CXI 10660*										
CXI 10710	Pump & Leak Check	3	134	SL_AT	5,021.76	CXI 10670, CXI 10700*										
CXI 10720	Final Alignment	3	134	SL_MES	4,296.48	CXI 10710*										

Activity ID	Activity Description	Orig Dur	Total Float	Resource ID	Budgeted Cost	Predecessors	FY08		FY09		FY10		FY11		FY12	
CXI 21050	REQD: CXI 0.1um SC	0	156		0.00	CXI_351310*										◆ REQD: CXI 0.1um SC
CXI 21060	REQD: CXI 0.1um SC Prec Instr Std	0	249		0.00	CXI_70350*										◆ REQD: CXI 0.1um SC Prec Instr Std
CXI 21100	REQD: FEH Controls HW/SW Ready for CD-4cOps	0	400		0.00	CXI 21030*										◆ REQD: FEH Controls HW/SW Ready for CD-4cOps
CXI 22060	Bleed Up FEH H5 Vacuum	2	156	SL_AT	3,347.84	CXI 21010*										✗Bleed Up FEH H5 Vacuum
CXI 22070	Disconnect Air/Water/Power/Ctrls/Interlocks	2	156	SL_AT, SL_CT	2,663.75	CXI 21010*										✗Disconnect Air/Water/Power/Ctrls/Interlocks
CXI 22080	Disconnect CXI Particle Injctr from CXI 1.0um SC	1	158	SL_PHSS, SL_AT	836.96	CXI 22070*										✗Disconnect CXI Particle Injctr from CXI 1.0um SC
CXI 22090	Disconnect Det Stg & CXI 1.0 um SC	1	156	SL_AT, SL_TMUC	1,549.92	CXI 22070, CXI 22100*										✗Disconnect Det Stg & CXI 1.0 um SC
CXI 22100	Remove Vac. Sections & Assoc. Vac. HW	2	156	SL_AT	3,347.84	CXI 22060*, CXI 22070*										✗Remove Vac. Sections & Assoc. Vac. HW
CXI 22102	Disassemble Beamline Radiation Shielding	3	231	SL_AT	5,021.76	CXI 22100*, CXI 22120										✗Disassemble Beamline Radiation Shielding
CXI 22103	Disassemble Beamline For Diag & 0.1um KB	5	231	SL_AT	8,369.60	CXI 22102*										✗Disassemble Beamline For Diag & 0.1um KB
CXI 22104	Install FEH H5 Diagnostics	3	238	SL_AT	5,021.76	CXI 22103*										✗Install FEH H5 Diagnostics
CXI 22105	Transport CXI 1.0um SC to Workshop	1	156	SL_TMUC	1,425.92	CXI 22080, CXI 22090*, CXI 22100										✗Transport CXI 1.0um SC to Workshop
CXI 22120	Transport & Stage Diag/0.1um KB to FEH H5	1	234	SL_TMUC	1,425.92	CXI 02340*, CXI 21010*, CXI 21030, CXI 21040*										✗Transport & Stage Diag/0.1um KB to FEH H5
CXI 23030	Transport 0.1um SC/0.1uPrec Inst Std for Install	1	156	SL_TMUC	712.96	CXI 21050*, CXI 21060										✗Transport 0.1um SC/0.1uPrec Inst Std for Install
CXI 23032	Pre-installation survey/marketing of XRT/FEH H5	3	207	SL_MES	4,296.48	CXI 23035*										✗Pre-installation survey/marketing of XRT/FEH H5
CXI 23034	Install XRT / FEH H5 floor anchors	2	207	SL_TMUC, SL_UTR	4,488.68	CXI 23032*										✗Install XRT / FEH H5 floor anchors
CXI 23035	Dismount / Store 1.0um Prec Inst Std	1	207	SL_TMUC, SL_AT	1,844.40	CXI 22080, CXI 22090, CXI 22105*										✗Dismount / Store 1.0um Prec Inst Std
CXI 23040	Install CXI 0.1um Precision Instrument Stand	1	156	SL_AT	1,673.92	CXI 23030*, CXI 23060										✗Install CXI 0.1um Precision Instrument Stand
CXI 23050	Preliminary Alignment - CXI 0.1um Prec Inst Std	1	156	SL_MES	1,432.16	CXI 23040*										✗Preliminary Alignment - CXI 0.1um Prec Inst Std
CXI 23060	Grout CXI 0.1um Prec Inst Std	1	207	SL_TMUC, SL_UTR	1,575.14	CXI 23034*										✗Grout CXI 0.1um Prec Inst Std
CXI 23070	Install CXI 0.1um SC	2	156	SL_AT	3,347.84	CXI 23050*										✗Install CXI 0.1um SC
CXI 23100	Install CXI Particle Injector	1	156	SL_PHS, SL_CT, SL_AT	1,181.91	CXI 10600, CXI 10610, CXI 23070*										✗Install CXI Particle Injector
CXI 23120	Functional Test - CXI Particle Injector	3	156	SL_PHSS, SL_PHS	0.00	CXI 23100*										✗Functional Test - CXI Particle Injector
CXI 23130	Preliminary Alignment - CXI 0.1um SC & Det Stg	1	156	SL_MES	1,432.16	CXI 23120*, CXI 23140										✗Preliminary Alignment - CXI 0.1um SC & Det Stg
CXI 23140	Install CXI Detector Stage	1	161	SL_CT, SL_AT	1,388.88	CXI 23050*										✗Install CXI Detector Stage
CXI 23150	Complete Vac Connections SC to Diag/Common Optic	1	156	SL_AT	1,673.92	CXI 23130*										✗Complete Vac Connections SC to Diag/Common Optic
CXI 23160	Complete Vacuum Connections SC to Detector Stage	1	156	SL_AT	1,673.92	CXI 23130*, CXI 23140										✗Complete Vacuum Connections SC to Detector Stage
CXI 23165	Install Vac. HW	2	156	SL_AT	3,347.84	CXI 23150*, CXI 23160*										✗Install Vac. HW
CXI 23170	Pump & Leak Check	3	156	SL_AT	5,021.76	CXI 23165*										✗Pump & Leak Check
CXI 23180	Final Component Alignment	1	156	SL_MES	1,432.16	CXI 23170*										✗Final Component Alignment
CXI 23190	Connect Air/Water/Power/Ctrls/Interlocks	2	156	SL_AT, SL_CT	2,777.76	CXI 23180*										✗Connect Air/Water/Power/Ctrls/Interlocks
CXI 23210	Controls/Interlocks Checks	2	156	SL_CT	2,207.68	CXI 21100, CXI 23190*										✗Controls/Interlocks Checks

