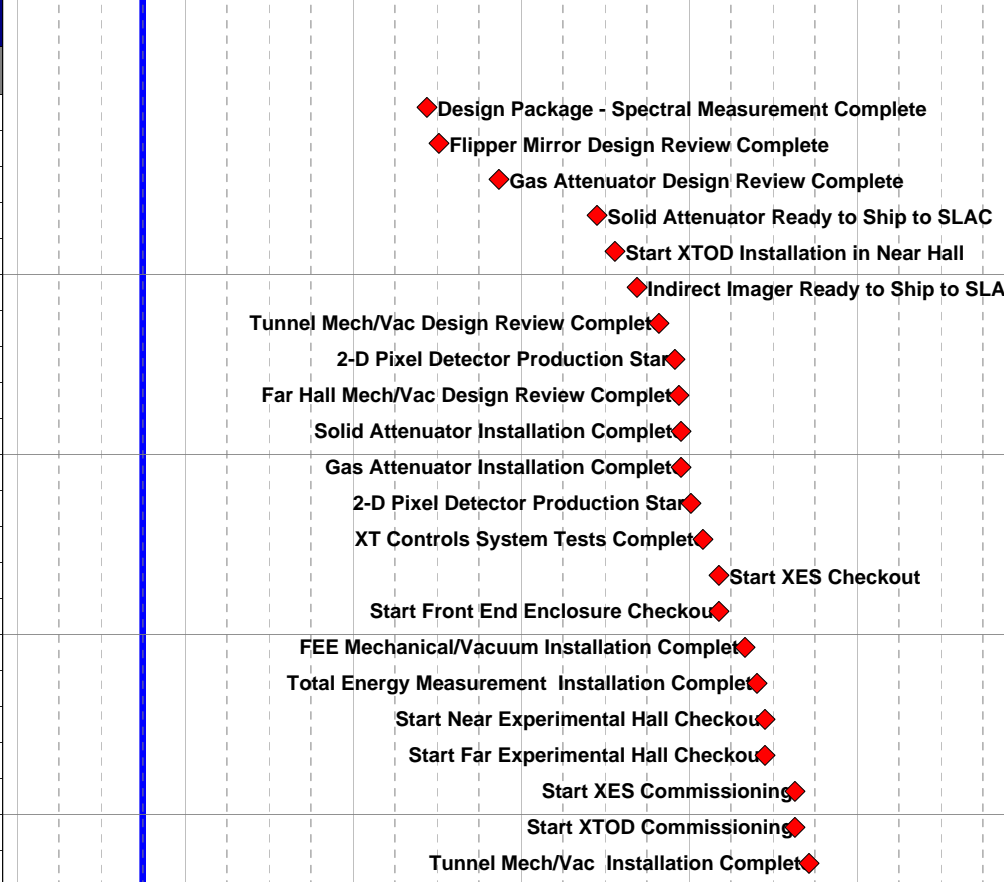


Activity ID	Activity Description	Orig Dur	Early Start	Early Finish						
					2004	2005	2006	2007	2008	2009

1 LCLS PROJECT - PED & CONSTRUCTION

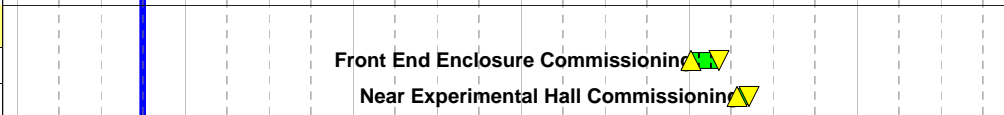
1.05 X-RAY TRANSPORT & DIAGNOSTICS SYSTEMS

MS3_XT035	Design Package - Spectral Measurement Complete	0		07JUN06*
MS3_XT015	Flipper Mirror Design Review Complete	0		05JUL06*
MS3_XT020	Gas Attenuator Design Review Complete	0		13NOV06*
MS3_XT025	Solid Attenuator Ready to Ship to SLAC	0		12JUN07*
MS3_XT043	Start XTOD Installation in Near Hall	0	23JUL07*	
MS3_XT030	Indirect Imager Ready to Ship to SLAC	0		10SEP07*
MS3_XT007	Tunnel Mech/Vac Design Review Complete	0		26OCT07*
MS3_XE015	2-D Pixel Detector Production Start	0	03DEC07*	
MS3_XT009	Far Hall Mech/Vac Design Review Complete	0		10DEC07*
MS3_XT040	Solid Attenuator Installation Complete	0		14DEC07*
MS3_XT045	Gas Attenuator Installation Complete	0		14DEC07*
MS2_XE015	2-D Pixel Detector Production Start	0	03JAN08*	
MS3_XT055	XT Controls System Tests Complete	0		30JAN08*
MS3_XE005	Start XES Checkout	0	04MAR08*	
MS3_XT080	Start Front End Enclosure Checkout	0	04MAR08*	
MS3_XT000	FEE Mechanical/Vacuum Installation Complete	0		02MAY08*
MS3_XT060	Total Energy Measurement Installation Complete	0		28MAY08*
MS3_XT066	Start Near Experimental Hall Checkout	0	12JUN08*	
MS3_XT071	Start Far Experimental Hall Checkout	0	12JUN08*	
MS2_XE005	Start XES Commissioning	0	18AUG08*	
MS2_XT005	Start XTOD Commissioning	0	18AUG08*	
MS3_XT050	Tunnel Mech/Vac Installation Complete	0		15SEP08*



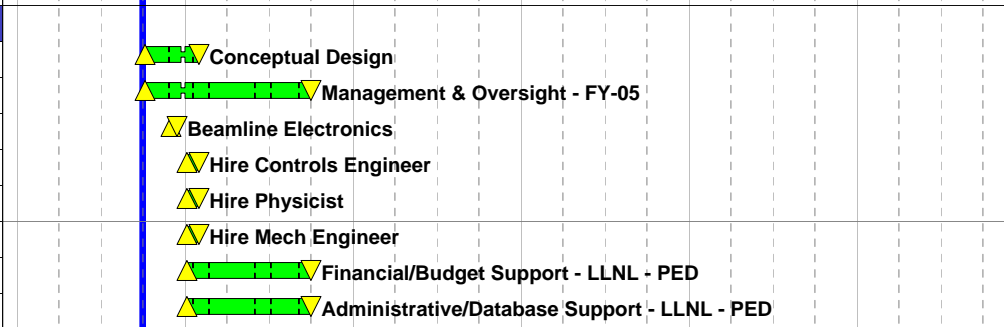
1.05.01 System Management & Integration

XTMS3_080	Front End Enclosure Commissioning	40	04JAN08	03MAR08
XTMS3_066	Near Experimental Hall Commissioning	20	14APR08	09MAY08



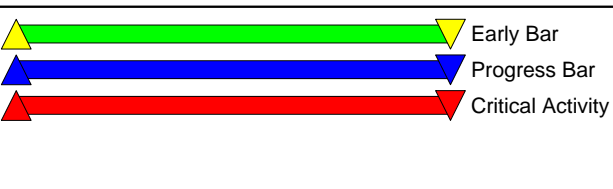
1.05.01.01 Management

XT_4455	Conceptual Design	73	04OCT04*	31JAN05
XT_026	Management & Oversight - FY-05	243	04OCT04*	30SEP05
XT_4456	Beamline Electronics	10	01DEC04*	14DEC04
XT_0300	Hire Controls Engineer	20	03JAN05	31JAN05
XT_0301	Hire Physicist	20	03JAN05	31JAN05
XT_034	Hire Mech Engineer	20	03JAN05	31JAN05
XT11_1000	Financial/Budget Support - LLNL - PED	190	03JAN05*	30SEP05
XT11_1001	Administrative/Database Support - LLNL - PED	190	03JAN05*	30SEP05



Start Date	01JUN01
Finish Date	31MAR09
Data Date	01OCT04
Run Date	29APR05 13:49

LCLS
INTEGRATED SCHEDULE
X-Ray Transport & Diagnostics



Activity ID	Activity Description	Orig Dur	Early Start	Early Finish						
					2004	2005	2006	2007	2008	2009
XT_0125	REQD: Near Hall Beneficial Occup - Slow Controls	0		07MAY07	REQD: Near Hall Beneficial Occup - Slow Control					
XT_0131	REQD: Far Hall Beneficial Occup - Slow Controls	0		06JUN07	REQD: Far Hall Beneficial Occup - Slow Control					
XT_0124	REQD: FEE Beneficial Occup - Slow Controls	0		09JUL07	REQD: FEE Beneficial Occup - Slow Control					
1.05.02.03 Fast Controls										
XT_01433	Specification - Fast Controls	40	05JUL06	29AUG06	Specification - Fast Controls					
XT_0144	Design - Fast Controls	40	30AUG06	25OCT06	Design - Fast Controls					
XT_0154	COMP: Design - Fast Controls	0		25OCT06	COMP: Design - Fast Controls					
XT_44	Prepare Bid Pkg - Fast Controls	20	26OCT06	22NOV06	Prepare Bid Pkg - Fast Controls					
XT_64	Bid Process - Fast Controls	40	27NOV06	06FEB07	Bid Process - Fast Controls					
XT_47	Vendor Fab/Ship - Fast Controls	100	08FEB07	29JUN07	Vendor Fab/Ship - Fast Controls					
XT_48	RECV: Electronics - Fast Controls	0		29JUN07	RECV: Electronics - Fast Controls					
XT_50	Assemble FEE - Fast Controls	20	02JUL07	30JUL07	Assemble FEE - Fast Controls					
XT_51	Programming FEE - Fast Controls	20	31JUL07	27AUG07	Programming FEE - Fast Controls					
XT_49	REQD: FEE Beneficial Occup - Fast Controls	0		27AUG07	REQD: FEE Beneficial Occup - Fast Control					
XT_52	AVAIL: FEE Fast Controls	0		27AUG07	AVAIL: FEE Fast Controls					
1.05.02.04 Femto Controls										
XT_01149	Specification - Femto Controls	40	05JUL06	29AUG06	Specification - Femto Controls					
XT_0148	Design - Femto Controls	40	30AUG06	25OCT06	Design - Femto Controls					
XT_0149	COMP: Design - Femto Controls	0		25OCT06	COMP: Design - Femto Controls					
XT_0150	Prepare Bid Pkg - Femto Controls	20	26OCT06	22NOV06	Prepare Bid Pkg - Femto Controls					
XT_11446	Bid Process - Femto Controls	40	27NOV06	06FEB07	Bid Process - Femto Controls					
XT_0145	Vendor Fab/Ship - Femto Controls	100	08FEB07	29JUN07	Vendor Fab/Ship - Femto Controls					
XT_01148	RECV: Electronics - Femto Controls	0		29JUN07	RECV: Electronics - Femto Controls					
XT_0152	Assemble FEE - Femto Controls	20	02JUL07	30JUL07	Assemble FEE - Femto Controls					
XT_0153	Programming FEE - Femto Controls	20	31JUL07	27AUG07	Programming FEE - Femto Controls					
XT_01155	AVAIL: FEE Femto Controls	0		27AUG07	AVAIL: FEE Femto Controls					
XT_0151	REQD: FEE Beneficial Occup - Femto Controls	0		27AUG07	REQD: FEE Beneficial Occup - Femto Control					
1.05.03 Mechanical & Vacuum Subsystem										
1.05.03.02 Mech/Vac Front End										
XT_1	Specification - FEE Mech/Vac	80	01FEB05	24MAY05	Specification - FEE Mech/Vac					
XT_0282	Design - FEE Mech/Vac	160	25MAY05	26JAN06	Design - FEE Mech/Vac					
XT_M2	COMP: Design Package - FEE Mech/Vac	0		26JAN06	COMP: Design Package - FEE Mech/Vac					
XT_200	Prepare Bid Pkg Valves - FEE Mech/Vac	20	26JAN07*	23FEB07	Prepare Bid Pkg Valves - FEE Mech/Vac					
XT_205	Prepare Bid Pkg Stands - FEE Mech/Vac	20	26JAN07*	23FEB07	Prepare Bid Pkg Stands - FEE Mech/Vac					
XT_210	Prepare Bid Pkg Ion Pumps - FEE Mech/Vac	20	26JAN07	23FEB07	Prepare Bid Pkg Ion Pumps - FEE Mech/Vac					
XT_290	Procure Vacuum Hardware - FEE Mech/Vac	20	26JAN07*	23FEB07	Procure Vacuum Hardware - FEE Mech/Vac					
XT_291	Procure Ion Gauge - FEE Mech/Vac	20	26JAN07*	23FEB07	Procure Ion Gauge - FEE Mech/Vac					

Start Date 01JUN01
Finish Date 31MAR09
Data Date 01OCT04
Run Date 29APR05 13:49

**LCLS
INTEGRATED SCHEDULE**

X-Ray Transport & Diagnostics



Activity ID	Activity Description	Orig Dur	Early Start	Early Finish						
					2004	2005	2006	2007	2008	2009
XT_2922	Procure Bellows & Spools - FEE Mech/Vac	20	26JAN07*	23FEB07				▲▼ Procure Bellows & Spools - FEE Mech/Vac		
XT_201	Bid Process Valves - FEE Mech/Vac	40	26FEB07	20APR07				▲▼ Bid Process Valves - FEE Mech/Vac		
XT_206	Bid Process Stands - FEE Mech/Vac	40	26FEB07	20APR07				▲▼ Bid Process Stands - FEE Mech/Vac		
XT_211	Bid Process Ion Pumps - FEE Mech/Vac	40	26FEB07	20APR07				▲▼ Bid Process Ion Pumps - FEE Mech/Vac		
XT_208	Vendor Fab Stands - FEE Mech/Vac	80	24APR07	15AUG07				▲▼ Vendor Fab Stands - FEE Mech/Vac		
XT_213	Vendor Fab/Ship Ion Pump - FEE Mech/Vac	80	24APR07	15AUG07				Vendor Fab/Ship Ion Pump - FEE Mech/Vac		
XT_203	Vendor Fab/Ship Valves - FEE Mech/Vac	81	24APR07	16AUG07				Vendor Fab/Ship Valves - FEE Mech/Vac		
XT_209	RECV: Stands FEE Mech/Vac	0		15AUG07				◆ RECV: Stands FEE Mech/Vac		
XT_214	RECV: System Cntrl - FEE Mech/Vac	0		15AUG07				◆ RECV: System Cntrl - FEE Mech/Vac		
XT_204	RECV: Valves - FEE Mech/Vac	0		16AUG07				◆ RECV: Valves - FEE Mech/Vac		
XT_224	REQD: FEE Beneficial Occup - Mech/Vac	0		16AUG07				REQD: FEE Beneficial Occup - Mech/Vac		
XT_4	Assemble - FEE Mech/Vac	20	17AUG07	14SEP07				▲▼ Assemble - FEE Mech/Vac		
XT_24	AVAIL: FEE Mechanical/Vacuum	0		14SEP07				◆ AVAIL: FEE Mechanical/Vacuum		
XT_1450	Prepare Bid Pkg Vacuum System Cart - Mech/Vac	5	01OCT07*	05OCT07				Prepare Bid Pkg Vacuum System Cart - Mech/Vac		
XT_9	Specification - Electron Dump Mech/Vac	10	01OCT07*	12OCT07				Specification - Electron Dump Mech/Vac		
XT_1455	Prepare Bid Pkg Welding Cart - Mech/Vac	5	08OCT07	12OCT07				Prepare Bid Pkg Welding Cart - Mech/Vac		
XT_1451	Bid Process Vacuum System Cart - Mech/Vac	20	08OCT07	02NOV07				Bid Process Vacuum System Cart - Mech/Vac		
XT_1460	Prepare Bid Pkg Tools - Mech/Vac	5	15OCT07	19OCT07				Prepare Bid Pkg Tools - Mech/Vac		
XT_10	Design - Electron Dump Mech/Vac	20	15OCT07	09NOV07				Design - Electron Dump Mech/Vac		
XT_1456	Bid Process Welding Cart - Mech/Vac	20	15OCT07	09NOV07				Bid Process Welding Cart - Mech/Vac		
XT_1461	Bid Process Tools - Mech/Vac	20	22OCT07	16NOV07				Bid Process Tools - Mech/Vac		
XT_1453	Vendor Fab/Ship Vacuum System Cart - Mech/Vac	20	06NOV07	05DEC07				Vendor Fab/Ship Vacuum System Cart - Mech/Vac		
XT_M1	COMP: Design Package - Electron Dump Mech/Vac	0		09NOV07				COMP: Design Package - Electron Dump Mech/Vac		
XT_216	Prepare Bid Pkg Ion Pumps - ED Mech/Vac	5	12NOV07	16NOV07				Prepare Bid Pkg Ion Pumps - ED Mech/Vac		
XT_2177	Procure Valves - ED Mech/Vac	40	12NOV07	25JAN08				▲▼ Procure Valves - ED Mech/Vac		
XT_2178	Procure Bellows and Spools - ED Mech/Vac	40	12NOV07	25JAN08				Procure Bellows and Spools - ED Mech/Vac		
XT_226	Procure Vacuum Hardware - ED Mech/Vac	40	12NOV07	25JAN08				Procure Vacuum Hardware - ED Mech/Vac		
XT_236	Procure Ion Gauges - ED Mech/Vac	40	12NOV07	25JAN08				Procure Ion Gauges - ED Mech/Vac		
XT_246	Procure Stands - ED Mech/Vac	40	12NOV07	25JAN08				▲▼ Procure Stands - ED Mech/Vac		
XT_1458	Vendor Fab/Ship Welding Cart - Mech/Vac	20	13NOV07	12DEC07				Vendor Fab/Ship Welding Cart - Mech/Vac		
XT_217	Bid Process Ion Pumps - ED Mech/Vac	20	19NOV07	03JAN08				Bid Process Ion Pumps - ED Mech/Vac		
XT_1463	Vendor Ship Tools - Mech/Vac	20	20NOV07	04JAN08				▲▼ Vendor Ship Tools - Mech/Vac		
XT_1454	RECV: Vacuum System Cart - Mech/Vac	0		05DEC07				RECV: Vacuum System Cart - Mech/Vac		
XT_1459	RECV: Welding Cart - Mech/Vac	0		12DEC07				◆ RECV: Welding Cart - Mech/Vac		
XT_1464	RECV: Tools - Mech/Vac	0		04JAN08				◆ RECV: Tools - Mech/Vac		
XT_219	Vendor Fab/Ship Ion Pumps - ED Mech/Vac	20	07JAN08	04FEB08				Vendor Fab/Ship Ion Pumps - ED Mech/Vac		
XT_45	Prepare Bid Pkg Leak Detectors - Mech/Vac	5	16JAN08	23JAN08				Prepare Bid Pkg Leak Detectors - Mech/Vac		

Start Date 01JUN01
Finish Date 31MAR09
Data Date 01OCT04
Run Date 29APR05 13:49

**LCLS
INTEGRATED SCHEDULE**

X-Ray Transport & Diagnostics



Activity ID	Activity Description	Orig Dur	Early Start	Early Finish							
					2004	2005	2006	2007	2008	2009	
XT_472	Procure Bellows & Spools - NEH Mech/Vac - H2	40	02OCT06*	28NOV06				▲▼	Procure Bellows & Spools - NEH Mech/Vac - H2		
XT_5507	Procure Ion Pump - NEH Mech/Vac - H2	40	03OCT06*	29NOV06				▲▼	Procure Ion Pump - NEH Mech/Vac - H2		
XT_0402	Bid Process Ion Pumps - NEH Mech/Vac - H1	20	12OCT06	08NOV06				▲▼	Bid Process Ion Pumps - NEH Mech/Vac - H1		
XT_0408	Bid Process - Stands - NEH Mech/Vac - H1	20	12OCT06	08NOV06				▲▼	Bid Process - Stands - NEH Mech/Vac - H1		
XT_0437	Bid Process Ion Pumps - NEH Mech/Vac - H3	20	12OCT06	08NOV06				▲▼	Bid Process Ion Pumps - NEH Mech/Vac - H3		
XT_0405	Vendor Fab/Ship Ion Pumps - NEH Mech/Vac - H1	60	10NOV06	22FEB07	Vendor Fab/Ship Ion Pumps - NEH Mech/Vac - H1			▲▼			
XT_0410	Vendor Fab/Ship Stands - NEH Mech/Vac - H1	60	10NOV06	22FEB07				▲▼	Vendor Fab/Ship Stands - NEH Mech/Vac - H1		
XT_0445	Vendor Fab/Ship Ion Pumps - NEH Mech/Vac - H3	60	10NOV06	22FEB07	Vendor Fab/Ship Ion Pumps - NEH Mech/Vac - H3			▲▼			
XT_0406	RECV: Ion Pumps - NEH Mech/Vac - H1	0		22FEB07				◆	RECV: Ion Pumps - NEH Mech/Vac - H1		
XT_04122	RECV: Stands - NEH Mech/Vac - H1	0		22FEB07				◆	RECV: Stands - NEH Mech/Vac - H1		
XT_0446	RECV: Ion Pumps - NEH Mech/Vac - H3	0		22FEB07				◆	RECV: Ion Pumps - NEH Mech/Vac - H3		
XT_773	REQD: Near Hall Beneficial Occup - Mech/Vac	0		20MAR07				◆	REQD: Near Hall Beneficial Occup - Mech/Vac		
XT_674	Assemble - NH Mech/Vac - H2	20	21MAR07	17APR07				▲▼	Assemble - NH Mech/Vac - H2		
XT_774	Assemble - NH Mech/Vac - H3	20	21MAR07	17APR07				▲▼	Assemble - NH Mech/Vac - H3		
XT_684	AVAIL: Near Hall Mech/Vac - H2	0		17APR07				◆	AVAIL: Near Hall Mech/Vac - H2		
XT_700	Assemble - NH Mech/Vac - H1	10	07JAN08	18JAN08				▲▼	Assemble - NH Mech/Vac - H1		
XT_710	AVAIL: Near Hall Mech/Vac - H1	0		18JAN08				◆	AVAIL: Near Hall Mech/Vac - H1		
XT_784	AVAIL: Near Hall Mech/Vac H3	0		18JAN08				◆	AVAIL: Near Hall Mech/Vac H3		
1.05.03.04 Mech/Vac Tunnel											
XT_551	Specification - Tunnel Mech/Vac	10	19JUN07*	02JUL07				▲▼	Specification - Tunnel Mech/Vac		
XT_552	Design - Tunnel Mech/Vac	40	03JUL07	28AUG07				▲▼	Design - Tunnel Mech/Vac		
XT_0411	COMP: Design Package - Tunnel Mech/Vac	0		28AUG07	COMP: Design Package - Tunnel Mech/Vac			◆			
XT_0416	Prepare Bid Pkg Vacuum Piping - Tunnel Mech/Vac	5	29AUG07	05SEP07	Prepare Bid Pkg Vacuum Piping - Tunnel Mech/Vac			▲▼			
XT_0427	Prepare Bid Pkg Ion Pumps - Tunnel Mech/Vac	5	29AUG07	05SEP07	Prepare Bid Pkg Ion Pumps - Tunnel Mech/Vac			▲▼			
XT_0433	Prepare Bid Pkg Ion Gauges - Tunnel Mech/Vac	5	29AUG07	05SEP07	Prepare Bid Pkg Ion Gauges - Tunnel Mech/Vac			▲▼			
XT_0439	Prepare Bid Pkg Stands - Tunnel Mech/Vac	5	29AUG07	05SEP07	Prepare Bid Pkg Stands - Tunnel Mech/Vac			▲▼			
MSC_XT001	CRIT: Release RFP for Ion Gauges	0		06SEP07				◆	CRIT: Release RFP for Ion Gauges		
MSC_XT002	CRIT: Release RFP for Ion Pumps	0		06SEP07				◆	CRIT: Release RFP for Ion Pumps		
XT_0443	Release RFP Ion Gauges - Tunnel Mech/Vac	1	06SEP07	06SEP07	Release RFP Ion Gauges - Tunnel Mech/Vac			▲▼			
XT_0448	Release RFP Ion Pumps - Tunnel Mech/Vac	1	06SEP07	06SEP07	Release RFP Ion Pumps - Tunnel Mech/Vac			▲▼			
XT_0412	Bid Process Vacuum Piping - Tunnel Mech/Vac	20	06SEP07	03OCT07	Bid Process Vacuum Piping - Tunnel Mech/Vac			▲▼			
XT_0440	Bid Process Stands - Tunnel Mech/Vac	20	06SEP07	03OCT07	Bid Process Stands - Tunnel Mech/Vac			▲▼			
XT_0428	Bid Process Ion Pumps - Tunnel Mech/Vac	20	07SEP07	04OCT07	Bid Process Ion Pumps - Tunnel Mech/Vac			▲▼			
XT_0434	Bid Process Ion Gauges - Tunnel Mech/Vac	20	07SEP07	04OCT07	Bid Process Ion Gauges - Tunnel Mech/Vac			▲▼			
XT_0414	Vendor Fab/Ship Vacuum Hardware- Tunnel Mech/Vac	40	05OCT07	03DEC07	Vendor Fab/Ship Vacuum Hardware- Tunnel Mech/Vac			▲▼			
XT_0424	Vendor Fab Gate Isolation Valve -Tunnel Mech/Vac	40	05OCT07	03DEC07	Vendor Fab Gate Isolation Valve -Tunnel Mech/Vac			▲▼			
XT_0442	Vendor Fab/Ship Stands - Tunnel Mech/Vac	40	05OCT07	03DEC07	Vendor Fab/Ship Stands - Tunnel Mech/Vac			▲▼			



**LCLS
INTEGRATED SCHEDULE**

X-Ray Transport & Diagnostics

Start Date 01JUN01
 Finish Date 31MAR09
 Data Date 01OCT04
 Run Date 29APR05 13:49

Activity ID	Activity Description	Orig Dur	Early Start	Early Finish							
					2004	2005	2006	2007	2008	2009	
XT_0478	Procure Hand Isolation Valve - Tunnel Mech/Vac	40	05OCT07	03DEC07		Procure Hand Isolation Valve - Tunnel Mech/Vac					
XT_0430	Vendor Fab/Ship Ion Pumps - Tunnel Mech/Vac	40	08OCT07	04DEC07		Vendor Fab/Ship Ion Pumps - Tunnel Mech/Vac					
XT_0431	Vendor Fab Spools - Tunnel Mech/Vac	40	08OCT07	04DEC07		Vendor Fab Spools - Tunnel Mech/Vac					
XT_0436	Vendor Fab/Ship Ion Gauges - Tunnel Mech/Vac	40	08OCT07	04DEC07		Vendor Fab/Ship Ion Gauges - Tunnel Mech/Vac					
XT_0415	RECV: Vacuum Piping - Tunnel Mech/Vac	0		03DEC07		RECV: Vacuum Piping - Tunnel Mech/Vac					
XT_0444	RECV: Stands - Tunnel Mech/Vac	0		03DEC07					RECV: Stands - Tunnel Mech/Vac		
XT_0425	REQD: Tunnel Beneficial Occup - Mech/Vac	0		04DEC07		REQD: Tunnel Beneficial Occup - Mech/Vac					
XT_0432	RECV: Ion Pumps - Tunnel Mech/Vac	0		04DEC07		RECV: Ion Pumps - Tunnel Mech/Vac					
XT_0438	RECV: Ion Gauges - Tunnel Mech/Vac	0		04DEC07		RECV: Ion Gauges - Tunnel Mech/Vac					
XT_555	Assemble - Tunnel Mech/Vac	40	05DEC07	15FEB08					Assemble - Tunnel Mech/Vac		
XT_625	AVAIL: Tunnel Mechanical/Vacuum	0		15FEB08					AVAIL: Tunnel Mechanical/Vacuum		
1.05.03.05 Mech/Vac Far Hall											
XT_661	Specification - Far Hall Mech/Vac - H1	20	19JUN07*	17JUL07					Specification - Far Hall Mech/Vac - H1		
XT_70	Specification - Far Hall Mech/Vac - H2	20	19JUN07*	17JUL07					Specification - Far Hall Mech/Vac - H2		
XT_78	Specification - Far Hall Mech/Vac - H3	20	19JUN07*	17JUL07					Specification - Far Hall Mech/Vac - H3		
XT_662	Design - Far Hall Mech/Vac - H1	60	18JUL07	10OCT07					Design - Far Hall Mech/Vac - H1		
XT_71	Design - Far Hall Mech/Vac - H2	60	18JUL07	10OCT07					Design - Far Hall Mech/Vac - H2		
XT_79	Design - Far Hall Mech/Vac - H3	60	18JUL07	10OCT07					Design - Far Hall Mech/Vac - H3		
XT_11	COMP: Design Package - Far Hall Mech/Vac	0		10OCT07		COMP: Design Package - Far Hall Mech/Vac					
XT_101	Prepare Bid Pkg Ion Pump - Far Hall Mech/Vac	5	11OCT07	17OCT07		Prepare Bid Pkg Ion Pump - Far Hall Mech/Vac					
XT_16	Prepare Bid Pkg Ion Pump - Far Hall Mech/Vac	5	11OCT07	17OCT07		Prepare Bid Pkg Ion Pump - Far Hall Mech/Vac					
XT_177	Prepare Bid Pkg Ion Pumps - Far Hall Mech/Vac	5	11OCT07	17OCT07		Prepare Bid Pkg Ion Pumps - Far Hall Mech/Vac					
XT_31	Prepare Bid Pkg Stands - Far Hall Mech/Vac	5	11OCT07	17OCT07		Prepare Bid Pkg Stands - Far Hall Mech/Vac					
XT_108	Procure Gate Isolation Valve - Far Hall Mech/Vac	40	11OCT07	07DEC07		Procure Gate Isolation Valve - Far Hall Mech/Vac					
XT_109	Procure Vacuum Hardware - Far Hall Mech/Vac	40	11OCT07	07DEC07		Procure Vacuum Hardware - Far Hall Mech/Vac					
XT_110	Procure Stands - Far Hall Mech/Vac	40	11OCT07	07DEC07		Procure Stands - Far Hall Mech/Vac					
XT_120	Procure Ion Gauges - Far Hall Mech/Vac	40	11OCT07	07DEC07		Procure Ion Gauges - Far Hall Mech/Vac					
XT_121	Procure Berilium Valves - Far Hall Mech/Vac	40	11OCT07	07DEC07		Procure Berilium Valves - Far Hall Mech/Vac					
XT_178	Procure Ion Gauges - Far Hall Mech/Vac	40	11OCT07	07DEC07		Procure Ion Gauges - Far Hall Mech/Vac					
XT_179	Procure Stands - Far Hall Mech/Vac	40	11OCT07	07DEC07		Procure Stands - Far Hall Mech/Vac					
XT_36	Procure Spools - Far Hall Mech/Vac - H1	40	11OCT07	07DEC07		Procure Spools - Far Hall Mech/Vac - H1					
XT_37	Procure Ion Gauges - Far Hall Mech/Vac - H1	40	11OCT07	07DEC07		Procure Ion Gauges - Far Hall Mech/Vac - H1					
XT_682	Procure Hand Isolation Valve-Far Hall Mec/Vac-H1	40	11OCT07	07DEC07		Procure Hand Isolation Valve-Far Hall Mec/Vac-H1					
XT_683	Procure Gate Isolation Valve-Far Hall Mec/Vac-H1	40	11OCT07	07DEC07		Procure Gate Isolation Valve-Far Hall Mec/Vac-H1					
XT_685	Procure Bellows & Spools - Far Hall Mech/Vac	40	11OCT07	07DEC07		Procure Bellows & Spools - Far Hall Mech/Vac					
XT_688	Procure Bellows & Spools - Far Hall Mech/Vac	40	11OCT07	07DEC07		Procure Bellows & Spools - Far Hall Mech/Vac					
XT_699	Procure Hand Isolation Valve - Far Hall Mech/Vac	40	11OCT07	07DEC07		Procure Hand Isolation Valve - Far Hall Mech/Vac					

Start Date 01JUN01
Finish Date 31MAR09
Data Date 01OCT04
Run Date 29APR05 13:49

**LCLS
INTEGRATED SCHEDULE**



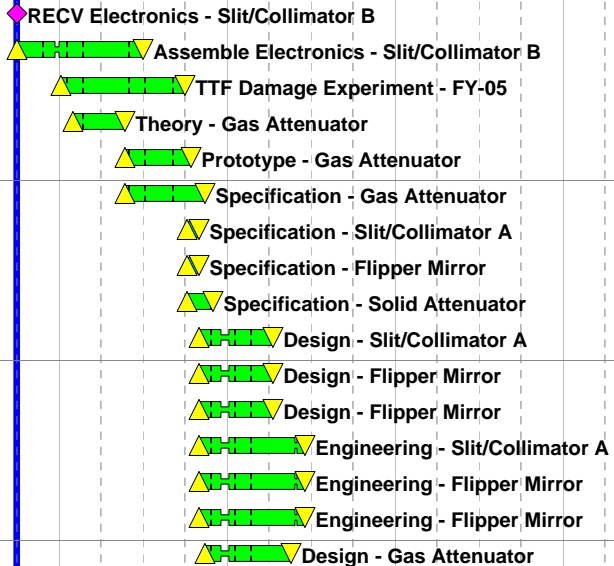
X-Ray Transport & Diagnostics

Activity ID	Activity Description	Orig Dur	Early Start	Early Finish							
					2004	2005	2006	2007	2008	2009	
XT_702	Procure Vacuum Hardware - Far Hall Mech/Vac - H1	40	11OCT07	07DEC07		Procure Vacuum Hardware - Far Hall Mech/Vac - H1					
XT_89	Procure Vacuum Hardware - Far Hall Mech/Vac	40	11OCT07	07DEC07		Procure Vacuum Hardware - Far Hall Mech/Vac					
XT_102	Bid Process Ion Pump - Far Hall Mech/Vac	20	18OCT07	14NOV07		Bid Process Ion Pump - Far Hall Mech/Vac					
XT_12	Bid Process Ion Pump - Far Hall Mech/Vac	20	18OCT07	14NOV07		Bid Process Ion Pump - Far Hall Mech/Vac					
XT_17	Bid Process Ion Pump - Far Hall Mech/Vac	20	18OCT07	14NOV07		Bid Process Ion Pump - Far Hall Mech/Vac					
XT_32	Bid Process Stands - Far Hall Mech/Vac	20	18OCT07	14NOV07		Bid Process Stands - Far Hall Mech/Vac					
XT_106	Vendor Fab/Ship Ion Pump - Far Hall Mech/Vac	40	16NOV07	31JAN08		Vendor Fab/Ship Ion Pump - Far Hall Mech/Vac					
XT_14	Vendor Fab/Ship Ion Pump - Far Hall Mech/Vac	40	16NOV07	31JAN08		Vendor Fab/Ship Ion Pump - Far Hall Mech/Vac					
XT_19	Vendor Fab/Ship Ion Pump - Far Hall Mech/Vac	40	16NOV07	31JAN08		Vendor Fab/Ship Ion Pump - Far Hall Mech/Vac					
XT_34	Vendor Fab/Ship Stands - Far Hall Mech/Vac	40	16NOV07	31JAN08		Vendor Fab/Ship Stands - Far Hall Mech/Vac					
XT_107	RECV: Ion Pump - Far Hall Mech/Vac	0		31JAN08		RECV: Ion Pump - Far Hall Mech/Vac					
XT_15	RECV: Ion Pump - Far Hall Mech/Vac	0		31JAN08		RECV: Ion Pump - Far Hall Mech/Vac					
XT_20	RECV: Ion Pump - Far Hall Mech/Vac	0		31JAN08		RECV: Ion Pump - Far Hall Mech/Vac					
XT_25	REQD: Far Hall Beneficial Occup - Mech/Vac	0		31JAN08		REQD: Far Hall Beneficial Occup - Mech/Vac					
XT_35	RECV: Stands - Far Hall Mech/Vac	0		31JAN08		RECV: Stands - Far Hall Mech/Vac					
XT_81	Assemble - Far Hall Mech/Vac - H3	5	01FEB08	07FEB08		Assemble - Far Hall Mech/Vac - H3					
XT_665	Assemble - Far Hall Mech/Vac	20	01FEB08	29FEB08					Assemble - Far Hall Mech/Vac		
XT_73	Assemble - Far Hall Mech/Vac - H2	20	01FEB08	29FEB08		Assemble - Far Hall Mech/Vac - H2					
XT_91	AVAIL: Far Hall Mech/Vac Ready to Install SLAC	0		07FEB08		AVAIL: Far Hall Mech/Vac Ready to Install SLAC					

1.05.04 Optical Subsystem

1.05.04.02 Facility Optics

XT_7026	RECV Electronics - Slit/Collimator B	0		30SEP04
XT_7031	Assemble Electronics - Slit/Collimator B	180	01OCT04	30JUN05
XT_2061	TTF Damage Experiment - FY-05	190	03JAN05	30SEP05
XT_2021	Theory - Gas Attenuator	80	01FEB05	24MAY05
XT_496	Prototype - Gas Attenuator	100	25MAY05	14OCT05
XT_491	Specification - Gas Attenuator	120	25MAY05	11NOV05
XT_260	Specification - Slit/Collimator A	20	03OCT05	28OCT05
XT_56	Specification - Flipper Mirror	20	03OCT05	28OCT05
XT_498	Specification - Solid Attenuator	40	03OCT05	29NOV05
XT_400	Design - Slit/Collimator A	100	31OCT05	07APR06
XT_57	Design - Flipper Mirror	100	31OCT05	07APR06
XT_59	Design - Flipper Mirror	100	31OCT05	07APR06
XT_410	Engineering - Slit/Collimator A	150	31OCT05	19JUN06
XT_58	Engineering - Flipper Mirror	150	31OCT05	19JUN06
XT_60	Engineering - Flipper Mirror	150	31OCT05	19JUN06
XT_493	Design - Gas Attenuator	120	14NOV05	19MAY06

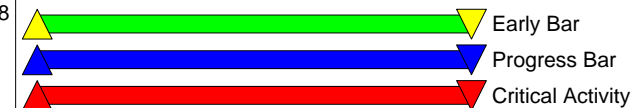


LCLS INTEGRATED SCHEDULE

X-Ray Transport & Diagnostics

Start Date 01JUN01
 Finish Date 31MAR09
 Data Date 01OCT04
 Run Date 29APR05 13:49

Activity ID	Activity Description	Orig Dur	Early Start	Early Finish							
					2004	2005	2006	2007	2008	2009	
XT_499	Design - Solid Attenuator	100	30NOV05	05MAY06							
XT_4012	Design Review - Slit/Collimator A	20	10APR06	05MAY06							
XT_61	Design Review - Flipper Mirror	20	10APR06	05MAY06							
XT_4013	COMP: Design Package - Slit/Collimator A	0		05MAY06							
XT_62	COMP: Design Package - Flipper Mirror	0		05MAY06							
XT_4006	Prepare Bid Pkg Jaws - Slit/Collimator A	5	08MAY06	12MAY06							
XT_4007	Prepare Bid Pkg Tank - Slit/Collimator A	5	08MAY06	12MAY06							
XT_4008	Prepare Bid Pkg Electronics - Slit/Collimator A	5	08MAY06	12MAY06							
XT_4009	Prepare Bid Pk Vacuum System - Slit/Collimator A	5	08MAY06	12MAY06							
XT_480	Prepare Bid Pkg Precision Hardware - Slit/Col A	5	08MAY06	12MAY06							
XT_529	Design Review - Solid Attenuator	5	08MAY06	12MAY06							
XT_63	Prepare Bid Pkg Jaws - Flipper Mirror	5	08MAY06	12MAY06							
XT_65	Prepare Bid Pkg Electronics - Flipper Mirror	5	08MAY06	12MAY06							
XT_66	Prepare Bid Pk Vacuum System - Flipper Mirror	5	08MAY06	12MAY06							
XT_711	Prepare Bid Pkg Tank - Flipper Mirror	5	08MAY06	12MAY06							
XT_7122	Prepare Bid Pkg Precision Hardware - Flipper Mir	5	08MAY06	12MAY06							
XT_519	COMP: Design Package - Solid Attenuator	0		12MAY06							
XT_4014	Bid Process Jaws - Slit/Collimator A	20	15MAY06	12JUN06							
XT_4015	Bid Process Tank - Slit/Collimator A	20	15MAY06	12JUN06							
XT_4016	Bid Process Electronics - Slit/Collimator A	20	15MAY06	12JUN06							
XT_4017	Bid Process Vacuum System - Slit/Collimator A	20	15MAY06	12JUN06							
XT_4018	Bid Process Precision Hardware - Slit/Col A	20	15MAY06	12JUN06							
XT_5001	Prepare Bid Pkg - Solid Attenuator	20	15MAY06	12JUN06							
XT_69	Bid Process Jaws - Flipper Mirror	20	15MAY06	12JUN06							
XT_72	Bid Process Vacuum System - Flipper Mirror	20	15MAY06	12JUN06							
XT_789	Bid Process Tank - Flipper Mirror	20	15MAY06	12JUN06							
XT_7924	Bid Process Electronics - Flipper Mirror	20	15MAY06	12JUN06							
XT_7955	Bid Process Precision Hardware - Flipper Mirror	20	15MAY06	12JUN06							
XT_2007	Preliminary Design Review - Gas Attenuator	20	22MAY06	19JUN06							
XT_4027	RECV: Electronics - Slit/Collimator A	0		12JUN06							
XT_86	RECV Electronics - Flipper Mirror	0		12JUN06							
XT_5011	Bid Process - Solid Attenuator	20	13JUN06	11JUL06							
XT_4004	Assemble Electronics - Slit/Collimator A	180	13JUN06	14MAR07							
XT_7818	Assemble Electronics - Flipper Mirror	200	13JUN06	11APR07							
XT_4031	Vendor Fab Jaws - Slit/Collimator A	20	20JUN06	18JUL06							
XT_4032	Vendor Fab Tank - Slit/Collimator A	20	20JUN06	18JUL06							
XT_4034	Vendor Fab Vacuum System - Slit/Collimator A	20	20JUN06	18JUL06							



**LCLS
INTEGRATED SCHEDULE**

X-Ray Transport & Diagnostics

Start Date 01JUN01
 Finish Date 31MAR09
 Data Date 01OCT04
 Run Date 29APR05 13:49

Activity ID	Activity Description	Orig Dur	Early Start	Early Finish							
					2004	2005	2006	2007	2008	2009	
XT_4035	Vendor Fab Precision Hardware - Slit/Col A	20	20JUN06	18JUL06							Vendor Fab Precision Hardware - Slit/Col A
XT_494	Second Design - Gas Attenuator	20	20JUN06	18JUL06							Second Design - Gas Attenuator
XT_5031	Vendor Fab/ship - Solid Attenuator	80	13JUL06	02NOV06							Vendor Fab/ship - Solid Attenuator
XT_4025	RECV: Jaws - Slit/Collimator A	0		18JUL06							RECV: Jaws - Slit/Collimator A
XT_4026	RECV: Tank - Slit/Collimator A	0		18JUL06							RECV: Tank - Slit/Collimator A
XT_4028	RECV: Vacuum System - Slit/Collimator A	0		18JUL06							RECV: Vacuum System - Slit/Collimator A
XT_4029	RECV: Precision Motion Hardware - Slit/Col A	0		18JUL06							RECV: Precision Motion Hardware - Slit/Col A
XT_2000	Chamber Engineering - Gas Attenuator	40	19JUL06	13SEP06							Chamber Engineering - Gas Attenuator
XT_2001	Venture Engineering - Gas Attenuator	40	19JUL06	13SEP06							Venture Engineering - Gas Attenuator
XT_2002	Turbo Pump Engineering - Gas Attenuator	40	19JUL06	13SEP06							Turbo Pump Engineering - Gas Attenuator
XT_2003	Dry Pump Engineering - Gas Attenuator	40	19JUL06	13SEP06							Dry Pump Engineering - Gas Attenuator
XT_2073	Storage Tank Engineering - Gas Attenuator	40	19JUL06	13SEP06							Storage Tank Engineering - Gas Attenuator
XT_2083	Gast Pump Engineering - Gas Attenuator	40	19JUL06	13SEP06							Gast Pump Engineering - Gas Attenuator
XT_2093	Controls Engineering - Gas Attenuator	40	19JUL06	13SEP06							Controls Engineering - Gas Attenuator
XT_2103	Greenfield Comp Engineering - Gas Attenuator	40	19JUL06	13SEP06							Greenfield Comp Engineering - Gas Attenuator
XT_495	Final Design Review - Gas Attenuator	40	19JUL06	13SEP06							Final Design Review - Gas Attenuator
XT_4002	Assemble Tank - Slit/Collimator A	180	19JUL06	18APR07							Assemble Tank - Slit/Collimator A
XT_4003	Assemble Vacuum System - Slit/Collimator A	180	19JUL06	18APR07							Assemble Vacuum System - Slit/Collimator A
XT_4010	Assemble Precision Hardware - Slit/Collimator A	180	19JUL06	18APR07							Assemble Precision Hardware - Slit/Collimator A
XT_490	Assemble Jaws - Slit/Collimator A	180	19JUL06	18APR07							Assemble Jaws - Slit/Collimator A
XT_2020	COMP: Design Package - Gas Attenuator	0		13SEP06							COMP: Design Package - Gas Attenuator
XT_2004	Prepare Bid Pkg Chamber - Gas Attenuator	10	14SEP06	27SEP06							Prepare Bid Pkg Chamber - Gas Attenuator
XT_2005	Prepare Bid Pkg Controls - Gas Attenuator	10	14SEP06	27SEP06							Prepare Bid Pkg Controls - Gas Attenuator
XT_2006	Prepare Bid Pkg Venture - Gas Attenuator	10	14SEP06	27SEP06							Prepare Bid Pkg Venture - Gas Attenuator
XT_2008	Prepare Bid Pkg Turbo Pumps - Gas Attenuator	10	14SEP06	27SEP06							Prepare Bid Pkg Turbo Pumps - Gas Attenuator
XT_2009	Prepare Bid Pkg Tanks - Gas Attenuator	10	14SEP06	27SEP06							Prepare Bid Pkg Tanks - Gas Attenuator
XT_2015	Prepare Bid Pkg Dry Pumps - Gas Attenuator	10	14SEP06	27SEP06							Prepare Bid Pkg Dry Pumps - Gas Attenuator
XT_2016	Prepare Bid Pkg Gast Pumps - Gas Attenuator	10	14SEP06	27SEP06							Prepare Bid Pkg Gast Pumps - Gas Attenuator
XT_497	Prepare Bid Pkg Hardware - Gas Attenuator	10	14SEP06	27SEP06							Prepare Bid Pkg Hardware - Gas Attenuator
XT_547	Prepare Bid Pkg Greenfield Comp - Gas Attenuator	10	14SEP06	27SEP06							Prepare Bid Pkg Greenfield Comp - Gas Attenuator
XT_567	Prepare Bid Pkg Blower - Gas Attenuator	10	14SEP06	27SEP06							Prepare Bid Pkg Blower - Gas Attenuator
XT_577	Prepare Bid Pkg Transfer Manifold - Gas Atten	10	14SEP06	27SEP06							Prepare Bid Pkg Transfer Manifold - Gas Atten
XT_587	Prepare Bid Pkg Gas Purifier - Gas Attenuator	10	14SEP06	27SEP06							Prepare Bid Pkg Gas Purifier - Gas Attenuator
XT_2022	Bid Process Chamber - Gas Attenuator	20	28SEP06	25OCT06							Bid Process Chamber - Gas Attenuator
XT_2023	Bid Process Hardware - Gas Attenuator	20	28SEP06	25OCT06							Bid Process Hardware - Gas Attenuator
XT_2024	Bid Process Controls - Gas Attenuator	20	28SEP06	25OCT06							Bid Process Controls - Gas Attenuator
XT_2025	Bid Process Venture - Gas Attenuator	20	28SEP06	25OCT06							Bid Process Venture - Gas Attenuator

Start Date 01JUN01
Finish Date 31MAR09
Data Date 01OCT04
Run Date 29APR05 13:49

**LCLS
INTEGRATED SCHEDULE**

X-Ray Transport & Diagnostics



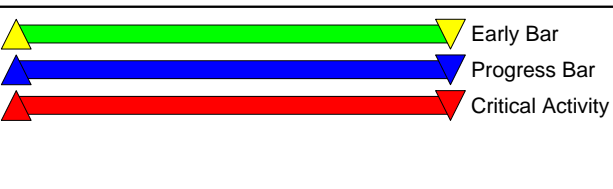
Activity ID	Activity Description	Orig Dur	Early Start	Early Finish							
					2004	2005	2006	2007	2008	2009	
XT_2026	Bid Process Turbo Pumps - Gas Attenuator	20	28SEP06	25OCT06							▲ Bid Process Turbo Pumps - Gas Attenuator
XT_2027	Bid Process Tanks - Gas Attenuator	20	28SEP06	25OCT06							▲ Bid Process Tanks - Gas Attenuator
XT_2028	Bid Process Dry Pumps - Gas Attenuator	20	28SEP06	25OCT06							▲ Bid Process Dry Pumps - Gas Attenuator
XT_2029	Bid Process Gast Pumps - Gas Attenuator	20	28SEP06	25OCT06							▲ Bid Process Gast Pumps - Gas Attenuator
XT_607	Bid Process Greenfield Comp - Gas Attenuator	20	28SEP06	25OCT06							▲ Bid Process Greenfield Comp - Gas Attenuator
XT_617	Bid Process Transfer Manifold - Gas Attenuator	20	28SEP06	25OCT06							▲ Bid Process Transfer Manifold - Gas Attenuator
XT_627	Bid Process Gas Purifier - Gas Attenuator	20	28SEP06	25OCT06							▲ Bid Process Gas Purifier - Gas Attenuator
XT_637	Bid Process Blower - Gas Attenuator	20	28SEP06	25OCT06							▲ Bid Process Blower - Gas Attenuator
XT_1101	Specification - Fixed Mask 1	20	02OCT06*	27OCT06							▲ Specification - Fixed Mask 1
XT_1120	Specification - Fixed Mask 2	20	02OCT06	27OCT06							▲ Specification - Fixed Mask 2
XT_1138	Specification - Fixed Mask 3	20	02OCT06	27OCT06							▲ Specification - Fixed Mask 3
XT_7000	Specification - Slit/Collimator B	20	02OCT06*	27OCT06							▲ Specification - Slit/Collimator B
XT_7512	Vendor Fab Vacuum System - Flipper Mirror	20	09OCT06	03NOV06							▲ Vendor Fab Vacuum System - Flipper Mirror
XT_778956	Vendor Fab Jaws - Flipper Mirror	20	09OCT06	03NOV06							▲ Vendor Fab Jaws - Flipper Mirror
XT_7813	Vendor Fab Precision Hardware - Flipper Mirror	20	09OCT06	03NOV06							▲ Vendor Fab Precision Hardware - Flipper Mirror
XT_80	Vendor Fab Tank - Flipper Mirror	20	09OCT06	03NOV06							▲ Vendor Fab Tank - Flipper Mirror
XT_2033	Vendor Fab Hardware - Gas Attenuator	40	27OCT06	09JAN07							▲ Vendor Fab Hardware - Gas Attenuator
XT_2037	Vendor Fab Venture - Gas Attenuator	40	27OCT06	09JAN07							▲ Vendor Fab Venture - Gas Attenuator
XT_2039	Vendor Fab Turbo Pumps - Gas Attenuator	40	27OCT06	09JAN07							▲ Vendor Fab Turbo Pumps - Gas Attenuator
XT_2041	Vendor Fab Tanks - Gas Attenuator	40	27OCT06	09JAN07							▲ Vendor Fab Tanks - Gas Attenuator
XT_2043	Vendor Fab Dry Pumps - Gas Attenuator	40	27OCT06	09JAN07							▲ Vendor Fab Dry Pumps - Gas Attenuator
XT_2045	Vendor Fab Gast Pumps - Gas Attenuator	40	27OCT06	09JAN07							▲ Vendor Fab Gast Pumps - Gas Attenuator
XT_2051	Vendor Fab Chamber - Gas Attenuator	40	27OCT06	09JAN07							▲ Vendor Fab Chamber - Gas Attenuator
XT_2054	Vendor Fab Controls - Gas Attenuator	40	27OCT06	09JAN07							▲ Vendor Fab Controls - Gas Attenuator
XT_22001	Vendor Fab Greenfield Comp - Gas Attenuator	40	27OCT06	09JAN07							▲ Vendor Fab Greenfield Comp - Gas Attenuator
XT_22004	Vendor Fab Transfer Manifold - Gas Attenuator	40	27OCT06	09JAN07							▲ Vendor Fab Transfer Manifold - Gas Attenuator
XT_22007	Vendor Fab Gas Purifier - Gas Attenuator	40	27OCT06	09JAN07							▲ Vendor Fab Gas Purifier - Gas Attenuator
XT_22010	Vendor Fab Blower - Gas Attenuator	40	27OCT06	09JAN07							▲ Vendor Fab Blower - Gas Attenuator
XT_1102	Design - Fixed Mask 1	100	30OCT06	06APR07							▲ Design - Fixed Mask 1
XT_1121	Design - Fixed Mask 2	100	30OCT06	06APR07							▲ Design - Fixed Mask 2
XT_1139	Design - Fixed Mask 3	100	30OCT06	06APR07							▲ Design - Fixed Mask 3
XT_7001	Design - Slit/Collimator B	100	30OCT06	06APR07							▲ Design - Slit/Collimator B
XT_7040	Engineering - Slit/Collimator B	150	30OCT06	18JUN07							▲ Engineering - Slit/Collimator B
XT_5041	RECV: Solid Attenuator at LLNL for Assembly	0		02NOV06							◆ RECV: Solid Attenuator at LLNL for Assembly
XT_7814	RECV Jaws - Flipper Mirror	0		03NOV06							◆ RECV Jaws - Flipper Mirror
XT_7816	RECV Tank - Flipper Mirror	0		03NOV06							◆ RECV Tank - Flipper Mirror
XT_87	RECV Vacuum System - Flipper Mirror	0		03NOV06							◆ RECV Vacuum System - Flipper Mirror

Start Date 01JUN01
Finish Date 31MAR09
Data Date 01OCT04
Run Date 29APR05 13:49

© Primavera Systems, Inc.

LCLS
INTEGRATED SCHEDULE

X-Ray Transport & Diagnostics



Activity ID	Activity Description	Orig Dur	Early Start	Early Finish							
					2004	2005	2006	2007	2008	2009	
XT_88	RECV Precision Motion Hardware - Flipper Mirror	0		03NOV06							◆ RECV Precision Motion Hardware - Flipper Mirror
XT_501	Assemble - Solid Attenuator	100	03NOV06	12APR07							▲▲▲▲▲ Assemble - Solid Attenuator
XT_7817	Assemble Tank - Flipper Mirror	200	06NOV06	05SEP07							▲▲▲▲▲ Assemble Tank - Flipper Mirror
XT_7819	Assemble Jaws - Flipper Mirror	200	06NOV06	05SEP07							▲▲▲▲▲ Assemble Jaws - Flipper Mirror
XT_90	Assemble Vacuum System - Flipper Mirror	200	06NOV06	05SEP07	Assemble Vacuum System - Flipper Mirror						▲▲▲▲▲
XT_92	Assemble Precision Hardware - Flipper Mirror	200	06NOV06	05SEP07	Assemble Precision Hardware - Flipper Mirror						▲▲▲▲▲
XT_2031	RECV: Chamber - Gas Attenuator	0		09JAN07							◆ RECV: Chamber - Gas Attenuator
XT_2050	RECV: Tanks - Gas Attenuator	0		09JAN07							◆ RECV: Tanks - Gas Attenuator
XT_2053	RECV: Hardware - Gas Attenuator	0		09JAN07							◆ RECV: Hardware - Gas Attenuator
XT_2055	RECV: Venture - Gas Attenuator	0		09JAN07							◆ RECV: Venture - Gas Attenuator
XT_2058	RECV: Turbo Pumps - Gas Attenuator	0		09JAN07							◆ RECV: Turbo Pumps - Gas Attenuator
XT_2062	RECV: Dry Pumps - Gas Attenuator	0		09JAN07							◆ RECV: Dry Pumps - Gas Attenuator
XT_2064	RECV: Controls - Gas Attenuator	0		09JAN07							◆ RECV: Controls - Gas Attenuator
XT_2074	RECV: Gast Pumps - Gas Attenuator	0		09JAN07							◆ RECV: Gast Pumps - Gas Attenuator
XT_22002	RECV: Greenfield Comp - Gas Attenuator	0		09JAN07							◆ RECV: Greenfield Comp - Gas Attenuator
XT_22005	RECV: Transfer Manifold - Gas Attenuator	0		09JAN07							◆ RECV: Transfer Manifold - Gas Attenuator
XT_22008	RECV: Gas Purifier - Gas Attenuator	0		09JAN07							◆ RECV: Gas Purifier - Gas Attenuator
XT_22011	RECV: Blower - Gas Attenuator	0		09JAN07							◆ RECV: Blower - Gas Attenuator
XT_2035	Assemble Controls - Gas Attenuator	60	10JAN07	05APR07							▲▲▲ Assemble Controls - Gas Attenuator
XT_2048	Assemble Turbo Pumps - Gas Attenuator	60	10JAN07	05APR07							▲▲▲ Assemble Turbo Pumps - Gas Attenuator
XT_2052	Assemble Chamber - Gas Attenuator	60	10JAN07	05APR07							▲▲▲ Assemble Chamber - Gas Attenuator
XT_2060	Assemble Tanks - Gas Attenuator	60	10JAN07	05APR07							▲▲▲ Assemble Tanks - Gas Attenuator
XT_2063	Assemble Hardware - Gas Attenuator	60	10JAN07	05APR07							▲▲▲ Assemble Hardware - Gas Attenuator
XT_2065	Assemble Venture - Gas Attenuator	60	10JAN07	05APR07							▲▲▲ Assemble Venture - Gas Attenuator
XT_2072	Assemble Dry Pumps - Gas Attenuator	60	10JAN07	05APR07							▲▲▲ Assemble Dry Pumps - Gas Attenuator
XT_2084	Assemble Gast Pumps - Gas Attenuator	60	10JAN07	05APR07							▲▲▲ Assemble Gast Pumps - Gas Attenuator
XT_2094	Assemble Greenfield Comp - Gas Attenuator	60	10JAN07	05APR07							▲▲▲ Assemble Greenfield Comp - Gas Attenuator
XT_2104	Assemble Transfer Manifold - Gas Attenuator	60	10JAN07	05APR07							▲▲▲ Assemble Transfer Manifold - Gas Attenuator
XT_2114	Assemble Gas Purifier - Gas Attenuator	60	10JAN07	05APR07							▲▲▲ Assemble Gas Purifier - Gas Attenuator
XT_2124	Assemble Blower - Gas Attenuator	60	10JAN07	05APR07							▲▲▲ Assemble Blower - Gas Attenuator
XT_1113	Design Review - Fixed Mask 1	20	09APR07	04MAY07							▲ Design Review - Fixed Mask 1
XT_1122	Design Review - Fixed Mask 2	20	09APR07	04MAY07							▲ Design Review - Fixed Mask 2
XT_1140	Design Review - Fixed Mask 3	20	09APR07	04MAY07							▲ Design Review - Fixed Mask 3
XT_7002	Design Review - Slit/Collimator B	20	09APR07	04MAY07							▲ Design Review - Slit/Collimator B
XT_631	AVAIL: Solid Attenuator Ready to Ship to SLAC	0		12APR07	AVAIL: Solid Attenuator Ready to Ship to SLAC						◆
XT_1114	COMP: Design Package - Fixed Mask 1	0		04MAY07							◆ COMP: Design Package - Fixed Mask 1
XT_1123	COMP: Design Fixed Mask 2	0		04MAY07							◆ COMP: Design Fixed Mask 2

Start Date 01JUN01
Finish Date 31MAR09
Data Date 01OCT04
Run Date 29APR05 13:49

© Primavera Systems, Inc.

**LCLS
INTEGRATED SCHEDULE**

X-Ray Transport & Diagnostics

Sheet 12 of 28

▲▲▲▲▲ Early Bar
▲▲▲▲▲ Progress Bar
▲▲▲▲▲ Critical Activity

Activity ID	Activity Description	Orig Dur	Early Start	Early Finish						
					2004	2005	2006	2007	2008	2009
XT_1141	COMP: Design Fixed Mask 3	0		04MAY07				◆ COMP: Design Fixed Mask 3		
XT_7003	COMP: Design Package - Slit/Collimator B	0		04MAY07				◆ COMP: Design Package - Slit/Collimator B		
XT_1115	Prepare Bid Pkg - Fixed Mask 1	5	07MAY07	11MAY07				▲ Prepare Bid Pkg - Fixed Mask 1		
XT_1124	Prepare Bid Pkg - Fixed Mask 2	5	07MAY07	11MAY07				▲ Prepare Bid Pkg - Fixed Mask 2		
XT_1142	Prepare Bid Pkg - Fixed Mask 3	5	07MAY07	11MAY07				▲ Prepare Bid Pkg - Fixed Mask 3		
XT_7004	Prepare Bid Pkg Jaws - Slit/Collimator B	5	07MAY07	11MAY07				▲ Prepare Bid Pkg Jaws - Slit/Collimator B		
XT_7005	Prepare Bid Pkg Tank - Slit/Collimator B	5	07MAY07	11MAY07				▲ Prepare Bid Pkg Tank - Slit/Collimator B		
XT_7006	Prepare Bid Pkg Electronics - Slit/Collimator B	5	07MAY07	11MAY07				▲ Prepare Bid Pkg Electronics - Slit/Collimator B		
XT_7007	Prepare Bid Pk Vacuum System - Slit/Collimator B	5	07MAY07	11MAY07				▲ Prepare Bid Pk Vacuum System - Slit/Collimator B		
XT_7008	Prepare Bid Pkg Precision Hardware - Slit/Col B	5	07MAY07	11MAY07				▲ Prepare Bid Pkg Precision Hardware - Slit/Col B		
XT_1116	Bid Process - Fixed Mask 1	20	14MAY07	11JUN07				▲ Bid Process - Fixed Mask 1		
XT_1125	Bid Process - Fixed Mask 2	20	14MAY07	11JUN07				▲ Bid Process - Fixed Mask 2		
XT_1143	Bid Process - Fixed Mask 3	20	14MAY07	11JUN07				▲ Bid Process - Fixed Mask 3		
XT_7009	Bid Process Jaws - Slit/Collimator B	20	14MAY07	11JUN07				▲ Bid Process Jaws - Slit/Collimator B		
XT_7010	Bid Process Tank - Slit/Collimator B	20	14MAY07	11JUN07				▲ Bid Process Tank - Slit/Collimator B		
XT_7011	Bid Process Electronics - Slit/Collimator B	20	14MAY07	11JUN07				▲ Bid Process Electronics - Slit/Collimator B		
XT_7012	Bid Process Vacuum System - Slit/Collimator B	20	14MAY07	11JUN07				▲ Bid Process Vacuum System - Slit/Collimator B		
XT_7013	Bid Process Precision Hardware - Slit/Col B	20	14MAY07	11JUN07				▲ Bid Process Precision Hardware - Slit/Col B		
XT_1118	Vendor Fab - Fixed Mask 1	60	13JUN07	06SEP07				▲ Vendor Fab - Fixed Mask 1		
XT_1127	Vendor Fab - Fixed Mask 2	60	13JUN07	06SEP07				▲ Vendor Fab - Fixed Mask 2		
XT_1145	Vendor Fab - Fixed Mask 3	60	13JUN07	06SEP07				▲ Vendor Fab - Fixed Mask 3		
XT_7019	Vendor Fab Jaws - Slit/Collimator B	20	19JUN07	17JUL07				▲ Vendor Fab Jaws - Slit/Collimator B		
XT_7020	Vendor Fab Tank - Slit/Collimator B	20	19JUN07	17JUL07				▲ Vendor Fab Tank - Slit/Collimator B		
XT_7022	Vendor Fab Vacuum System - Slit/Collimator B	20	19JUN07	17JUL07				▲ Vendor Fab Vacuum System - Slit/Collimator B		
XT_7023	Vendor Fab Precision Hardware - Slit/Col B	20	19JUN07	17JUL07				▲ Vendor Fab Precision Hardware - Slit/Col B		
XT_2125	REQD: FEE Beneficial Occupancy	0		09JUL07				◆ REQD: FEE Beneficial Occupancy		
XT_621	REQD: FEE Beneficial Occupany - Solid Attenuator	0		09JUL07				◆ REQD: FEE Beneficial Occupany - Solid Attenuator		
XT_7024	RECV Jaws - Slit/Collimator B	0		17JUL07				◆ RECV Jaws - Slit/Collimator B		
XT_7025	RECV Tank - Slit/Collimator B	0		17JUL07				◆ RECV Tank - Slit/Collimator B		
XT_7027	RECV Vacuum System - Slit/Collimator B	0		17JUL07				◆ RECV Vacuum System - Slit/Collimator B		
XT_7028	RECV Precision Motion Hardware - Slit/Col B	0		17JUL07				◆ RECV Precision Motion Hardware - Slit/Col B		
XT_7029	Assemble Tank - Slit/Collimator B	180	18JUL07	17APR08				▲ Assemble Tank - Slit/Collimator B		
XT_7030	Assemble Vacuum System - Slit/Collimator B	180	18JUL07	17APR08				▲ Assemble Vacuum System - Slit/Collimator B		
XT_7032	Assemble Precision Hardware - Slit/Collimator B	180	18JUL07	17APR08				▲ Assemble Precision Hardware - Slit/Collimator B		
XT_7033	Assemble Jaws - Slit/Collimator B	180	18JUL07	17APR08				▲ Assemble Jaws - Slit/Collimator B		
XT_1112	REQD: FEH Beneficial Occupancy	0		05SEP07				◆ REQD: FEH Beneficial Occupancy		
XT_112	AVAIL: Flipper Mirror	0		05SEP07				◆ AVAIL: Flipper Mirror		

Start Date 01JUN01
Finish Date 31MAR09
Data Date 01OCT04
Run Date 29APR05 13:49

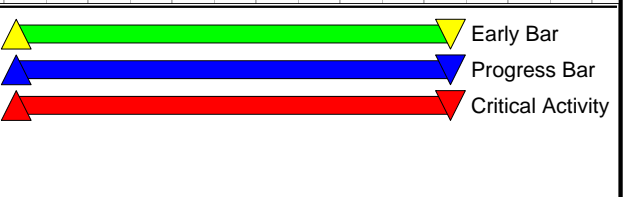
**LCLS
INTEGRATED SCHEDULE**

X-Ray Transport & Diagnostics



Activity ID	Activity Description	Orig Dur	Early Start	Early Finish							
					2004	2005	2006	2007	2008	2009	
XT_8007	RECV: Tank - Near Hall Optics Tank	0		21MAY07					◆ RECV: Tank - Near Hall Optics Tank		
XT_506	Assemble Motion & Mech - Near Hall Optics Tank	40	22MAY07	18JUL07	Assemble Motion & Mech - Near Hall Optics Tank						
XT_546	Assemble Control & Elect - Near Hall Optics Tank	40	22MAY07	18JUL07	Assemble Control & Elect - Near Hall Optics Tank						
XT_566	Assemble Tank - Near Hall Optics Tank	40	22MAY07	18JUL07				▲▲ Assemble Tank - Near Hall Optics Tank			
XT_586	Assemble Vacuum - Near Hall Optics Tank	40	22MAY07	18JUL07	Assemble Vacuum - Near Hall Optics Tank						
XT_606	Assemble Stand - Near Hall Optics Tank	40	22MAY07	18JUL07				▲▲ Assemble Stand - Near Hall Optics Tank			
XT_616	REQD: Near Hall Beneficial Occupancy	0		18JUL07				◆ REQD: Near Hall Beneficial Occupancy			
1.05.04.04 Crystals & Gratings											
XT_262	Specification - Pulse Split & Delay	20	03OCT05	28OCT05	▲▲ Specification - Pulse Split & Delay						
XT_269	Specification - System Monochrometer	20	03OCT05	28OCT05	▲▲ Specification - System Monochrometer						
XT_299	Engineering - System Monochrometer	60	03OCT05*	11JAN06	▲▲ Engineering - System Monochrometer						
XT_263	Design - Pulse Split & Delay	250	31OCT05	08NOV06	▲▲ Design - Pulse Split & Delay						
XT_270	Design - System Monochrometer	250	31OCT05	08NOV06	▲▲ Design - System Monochrometer						
XT_293	COMP: Design Pulse Split & Delay	0		08NOV06				◆ COMP: Design Pulse Split & Delay			
XT_320	COMP: Design Package - System Monochrometer	0		08NOV06				◆ COMP: Design Package - System Monochrometer			
XT_440	Prepare Bid Pkg - System Monochrometer	5	09NOV06	15NOV06	▲▲ Prepare Bid Pkg - System Monochrometer						
XT_303	Prep Bid Pkg Vacuum Chamber -Pulse Split & Delay	10	09NOV06	22NOV06	▲▲ Prep Bid Pkg Vacuum Chamber -Pulse Split & Delay						
XT_314	Prep Bid Pkg Prec Lin Stage -Pulse Split & Delay	10	09NOV06	22NOV06	▲▲ Prep Bid Pkg Prec Lin Stage -Pulse Split & Delay						
XT_264	Procure Hardware - Pulse Split & Delay	60	09NOV06	21FEB07	▲▲ Procure Hardware - Pulse Split & Delay						
XT_441	Bid Process - System Monochrometer	20	16NOV06	15DEC06	▲▲ Bid Process - System Monochrometer						
XT_313	Bid Process Vacuum Chamber - Pulse Split & Delay	20	27NOV06	08JAN07	Bid Process Vacuum Chamber - Pulse Split & Delay						
XT_315	Bid Process Prec Lin Stage - Pulse Split & Delay	20	27NOV06	08JAN07	▲▲ Bid Process Prec Lin Stage - Pulse Split & Delay						
XT_443	Vendor Fab - System Monochrometer	100	03JAN07	24MAY07	▲▲ Vendor Fab - System Monochrometer						
XT_317	Vendor Fab Prec Lin Stage - Pulse Split & Delay	60	10JAN07	05APR07	Vendor Fab Prec Lin Stage - Pulse Split & Delay						
XT_333	Vendor Fab/Ship Vacuum Chamb-Pulse Split & Delay	60	10JAN07	05APR07	Vendor Fab/Ship Vacuum Chamb-Pulse Split & Delay						
XT_318	RECV: Prec Lin Stage - Pulse Split & Delay	0		05APR07				◆ RECV: Prec Lin Stage - Pulse Split & Delay			
XT_343	RECV: Vacuum Chamber Pulse Split & Delay	0		05APR07				◆ RECV: Vacuum Chamber Pulse Split & Delay			
XT_265	Assemble/Inspect - Pulse Split & Delay	200	06APR07	05FEB08	Assemble/Inspect - Pulse Split & Delay						
XT_444	RECV: System Monochrometer	0		24MAY07				◆ RECV: System Monochrometer			
XT_272	Assemble/Inspect - System Monochrometer	140	25MAY07	13DEC07	Assemble/Inspect - System Monochrometer						
XT_302	AVAIL: System Monochrometer	0		13DEC07				◆ AVAIL: System Monochrometer			
XT_312	REQD: System Monochrometer	0		13DEC07				◆ REQD: System Monochrometer			
1.05.05 Diagnostics Subsystem											
1.05.05.02 Modeling & Simulation											
XT_99	Beam Simulation - FY-05	170	02MAR05*	28OCT05	▲▲ Beam Simulation - FY-05						
XT_276	Specification - Wave Model	20	03OCT05*	28OCT05	▲▲ Specification - Wave Model						
XT_283	Specification - Monte Carlo Model	20	03OCT05	28OCT05	▲▲ Specification - Monte Carlo Model						

Start Date 01JUN01
Finish Date 31MAR09
Data Date 01OCT04
Run Date 29APR05 13:49



Activity ID	Activity Description	Orig Dur	Early Start	Early Finish						
					2004	2005	2006	2007	2008	2009
XT_277	Design - Wave Model	250	31OCT05	08NOV06				Design - Wave Model		
XT_284	Design - Monte Carlo Model	250	31OCT05	08NOV06				Design - Monte Carlo Model		
XT_297	COMP: Design Wave Model	0		08NOV06				COMP: Design Wave Model		
XT_304	COMP: Design - Monte Carlo Model	0		08NOV06				COMP: Design - Monte Carlo Model		
XT_1169	Prep Bid Pkg Computer System - Monte Carlo Model	5	09NOV06	15NOV06				Prep Bid Pkg Computer System - Monte Carlo Model		
XT_278	Prep Bid Pkg Computer System - Wave Model	5	09NOV06	15NOV06				Prep Bid Pkg Computer System - Wave Model		
XT_1170	Bid Process Computer System - Monte Carlo Model	20	16NOV06	15DEC06				Bid Process Computer System - Monte Carlo Model		
XT_298	Bid Process Computer System - Wave Model	20	16NOV06	15DEC06				Bid Process Computer System - Wave Model		
XT_1172	Vendor Ship Computer System - Wave Model	80	03JAN07	26APR07				Vendor Ship Computer System - Wave Model		
XT_328	Vendor Ship Computer System - Wave Model	80	03JAN07	26APR07				Vendor Ship Computer System - Wave Model		
XT_1173	RECV: Computer System - Wave Model	0		26APR07				RECV: Computer System - Wave Model		
XT_338	RECV: Computer System - Wave Model	0		26APR07				RECV: Computer System - Wave Model		
XT_279	Assemble - Wave Model	200	27APR07	27FEB08				Assemble - Wave Model		
XT_286	Assemble - Monte Carlo Model	200	27APR07	27FEB08				Assemble - Monte Carlo Model		
1.05.05.03 Facility Diagnostics										
XT_591	Specification - Direct Imager	80	02FEB05*	25MAY05				Specification - Direct Imager		
XT_691	Specification - Indirect Imager	80	02FEB05*	25MAY05				Specification - Indirect Imager		
XT_5922	Camera - Direct Imager	60	09FEB05	04MAY05				Camera - Direct Imager		
XT_592	Design (5) - Direct Imager	200	26MAY05	27MAR06				Design (5) - Direct Imager		
XT_692	Design - Indirect Imager	200	26MAY05	27MAR06				Design - Indirect Imager		
XT_622	COMP: Design	0		27MAR06				COMP: Design		
XT_712	COMP: Design Package - Indirect Imager	0		27MAR06				COMP: Design Package - Indirect Imager		
XT_5551	Prep Bid Pkg Prototype - Direct Imager	10	28MAR06	10APR06				Prep Bid Pkg Prototype - Direct Imager		
XT_5556	Prep Bid Pkg Production Units - Direct Imager	10	28MAR06	10APR06				Prep Bid Pkg Production Units - Direct Imager		
XT_593	Prep Bid Pkg Data Acquisition - Direct Imager	10	28MAR06	10APR06				Prep Bid Pkg Data Acquisition - Direct Imager		
XT_6600	Prep Bid Pkg Prototype - Indirect Imager	10	28MAR06	10APR06				Prep Bid Pkg Prototype - Indirect Imager		
XT_6605	Prep Bid Pkg Production Units - Indirect Imager	10	28MAR06	10APR06				Prep Bid Pkg Production Units - Indirect Imager		
XT_5200	Bid Process Production Units - Direct Imager	40	11APR06	06JUN06				Bid Process Production Units - Direct Imager		
XT_5552	Bid Process Prototype - Direct Imager	40	11APR06	06JUN06				Bid Process Prototype - Direct Imager		
XT_633	Bid Process Data Acquisition - Direct Imager	40	11APR06	06JUN06				Bid Process Data Acquisition - Direct Imager		
XT_6601	Bid Process Prototype - Indirect Imager	40	11APR06	06JUN06				Bid Process Prototype - Indirect Imager		
XT_6606	Bid Process Production Units - Indirect Imager	40	11APR06	06JUN06				Bid Process Production Units - Indirect Imager		
XT_6603	Vendor Fab/Ship Prototype Hrdware-Indirect Image	60	08JUN06	31AUG06				Vendor Fab/Ship Prototype Hrdware-Indirect Image		
XT_6608	Vendor Fab/Ship Production Units - Indirect Imag	60	08JUN06	31AUG06				Vendor Fab/Ship Production Units - Indirect Imag		
XT_6604	RECV: Prototype Hardware - Indirect Imager	0		31AUG06				RECV: Prototype Hardware - Indirect Imager		
XT_6609	RECV: Production Units - Indirect Imager	0		31AUG06				RECV: Production Units - Indirect Imager		
XT_694	Assemble - Indirect Imager	100	01SEP06	08FEB07				Assemble - Indirect Imager		

Start Date 01JUN01
Finish Date 31MAR09
Data Date 01OCT04
Run Date 29APR05 13:49

© Primavera Systems, Inc.

**LCLS
INTEGRATED SCHEDULE**

X-Ray Transport & Diagnostics

Sheet 16 of 28

Early Bar
 Progress Bar
 Critical Activity

Activity ID	Activity Description	Orig Dur	Early Start	Early Finish							
					2004	2005	2006	2007	2008	2009	
XT_5554	Vendor Fab/Ship Prototype Hrdware- Direct Imager	90	03OCT06	26FEB07					Vendor Fab/Ship Prototype Hrdware- Direct Im		
XT_5559	Vendor Fab/Ship Production Units - Direct Imager	90	03OCT06	26FEB07	Vendor Fab/Ship Production Units - Direct Image						
XT_653	Vendor Fab/Ship Data Acquisiton - Direct Imager	90	03OCT06	26FEB07	Vendor Fab/Ship Data Acquisiton - Direct Image						
XT_5555	RECV: Prototype Hardware - Direct Imager	0		26FEB07						RECV: Prototype Hardware - Direct Imager	
XT_5560	RECV: Production Units - Direct Imager	0		26FEB07						RECV: Production Units - Direct Imager	
XT_663	RECV: Data Acquisition- Direct Imager	0		26FEB07						RECV: Data Acquisition- Direct Imager	
XT_594	Assemble - Direct Imager	100	27FEB07	18JUL07						Assemble - Direct Imager	
XT_1000	Specification - Ion Pumped Tank	40	07MAY07*	02JUL07						Specification - Ion Pumped Tank	
XT_991	Specification - FEE Diagnostic Tank	40	07MAY07*	02JUL07						Specification - FEE Diagnostic Tank	
XT_992	Design - FEE Diagnostic Tank	125	03JUL07	15JAN08						Design - FEE Diagnostic Tank	
XT_1001	Design - Ion Pumped Tank	200	03JUL07	01MAY08						Design - Ion Pumped Tank	
XT_704	AVAIL: Indirect Imager Ready to Ship to SLAC	0		09JUL07	AVAIL: Indirect Imager Ready to Ship to SLA						
XT_654	AVAIL: Direct Imager	0		18JUL07						AVAIL: Direct Imager	
XT_1012	COMP: Design - FEE Diagnostic Tank	0		15JAN08						COMP: Design - FEE Diagnostic Tan	
XT_7700	COMP: Design Package - Ion Pumped Tank	0		15JAN08						COMP: Design Package - Ion Pumped Tan	
XT_1032	Prep Bid Pkg Tank - FEE Diagnostic Tank	5	16JAN08	23JAN08						Prep Bid Pkg Tank - FEE Diagnostic Tan	
XT_6670	Prep Bid Pkg Turbo System - FEE Diagnostic Tank	5	16JAN08	23JAN08						Prep Bid Pkg Turbo System - FEE Diagnostic Tan	
XT_6675	Prep Bid Pkg Scroll Dry Pump-FEE Diagnostic Tnk	5	16JAN08	23JAN08						Prep Bid Pkg Scroll Dry Pump-FEE Diagnostic Tr	
XT_6680	Prep Bid Pkg Imager Stages - FEE Diagnostic Tank	5	16JAN08	23JAN08						Prep Bid Pkg Imager Stages - FEE Diagnostic Tan	
XT_6685	Prep Bid Pkg Stand - FEE Diagnostic Tank	5	16JAN08	23JAN08						Prep Bid Pkg Stand - FEE Diagnostic Tan	
XT_6690	Prep Bid Pkg Motor Driver - FEE Diagnostic Tank	5	16JAN08	23JAN08						Prep Bid Pkg Motor Driver - FEE Diagnostic Tan	
XT_6695	Prep Bid Pkg EPICS IF - FEE Diagnostic Tank	5	16JAN08	23JAN08						Prep Bid Pkg EPICS IF - FEE Diagnostic Tan	
XT_6700	Prep Bid Pk Misc Racks/Chases-FEE Diagnostic Tnk	5	16JAN08	23JAN08						Prep Bid Pk Misc Racks/Chases-FEE Diagnostic Tr	
XT_7701	Prep Bid Pkg Tank - Ion Pumped Tank	5	16JAN08	23JAN08						Prep Bid Pkg Tank - Ion Pumped Tan	
XT_7706	Prep Bid Pkg Ion Pump - Ion Pumped Tank	5	16JAN08	23JAN08						Prep Bid Pkg Ion Pump - Ion Pumped Tan	
XT_7711	Prep Bid Pkg Misc - Ion Pumped Tank	5	16JAN08	23JAN08						Prep Bid Pkg Misc - Ion Pumped Tan	
XT_7716	Prep Bid Pkg Imager Stages - Ion Pumped Tank	5	16JAN08	23JAN08						Prep Bid Pkg Imager Stages - Ion Pumped Tan	
XT_7721	Prep Bid Pkg Stand - Ion Pumped Tank	5	16JAN08	23JAN08						Prep Bid Pkg Stand - Ion Pumped Tan	
XT_7726	Prep Bid Pkg Motor Driver - Ion Pumped Tank	5	16JAN08	23JAN08						Prep Bid Pkg Motor Driver - Ion Pumped Tan	
XT_7731	Prep Bid Pkg EPICS IF - Ion Pumped Tank	5	16JAN08	23JAN08						Prep Bid Pkg EPICS IF - Ion Pumped Tan	
XT_7736	Prep Bid Pk Misc Racks/Chases-Ion Pumped Tank	5	16JAN08	23JAN08						Prep Bid Pk Misc Racks/Chases-Ion Pumped Tan	
XT_993	Procure Computer - FEE Diagnostic Tank	60	16JAN08	10APR08						Procure Computer - FEE Diagnostic Tan	
XT_1042	Bid Process Tank - FEE Diagnostic Tank	20	24JAN08	21FEB08						Bid Process Tank - FEE Diagnostic Tan	
XT_6671	Bid Process Turbo System - FEE Diagnostic Tank	20	24JAN08	21FEB08						Bid Process Turbo System - FEE Diagnostic Tan	
XT_6676	Bid Process Scroll Dry Pump-FEE Diagnostic Tnk	20	24JAN08	21FEB08						Bid Process Scroll Dry Pump-FEE Diagnostic Tr	
XT_6681	Bid Process Imager Stages - FEE Diagnostic Tank	20	24JAN08	21FEB08						Bid Process Imager Stages - FEE Diagnostic Tan	
XT_6686	Bid Process Stand - FEE Diagnostic Tank	20	24JAN08	21FEB08						Bid Process Stand - FEE Diagnostic Tan	

Start Date 01JUN01
Finish Date 31MAR09
Data Date 01OCT04
Run Date 29APR05 13:49

© Primavera Systems, Inc.

LCLS
INTEGRATED SCHEDULE
X-Ray Transport & Diagnostics

Sheet 17 of 28

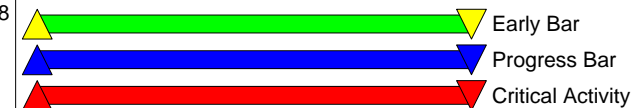
Early Bar
Progress Bar
Critical Activity

Activity ID	Activity Description	Orig Dur	Early Start	Early Finish						
					2004	2005	2006	2007	2008	2009
XT_6691	Bid Process Motor Driver - FEE Diagnostic Tank	20	24JAN08	21FEB08						
XT_6696	Bid Process EPICS IF - FEE Diagnostic Tank	20	24JAN08	21FEB08						
XT_6701	Bid Process Misc Racks/Chases-FEE Diagnostic Tnk	20	24JAN08	21FEB08						
XT_7702	Bid Process Tank - Ion Pumped Tank	20	24JAN08	21FEB08						
XT_7707	Bid Process Ion Pump - Ion Pumped Tank	20	24JAN08	21FEB08						
XT_7712	Bid Process Misc - Ion Pumped Tank	20	24JAN08	21FEB08						
XT_7717	Bid Process Imager Stages - Ion Pumped Tank	20	24JAN08	21FEB08						
XT_7722	Bid Process Stand - Ion Pumped Tank	20	24JAN08	21FEB08						
XT_7727	Bid Process Motor Driver - Ion Pumped Tank	20	24JAN08	21FEB08						
XT_7732	Bid Process EPICS IF - Ion Pumped Tank	20	24JAN08	21FEB08						
XT_7737	Bid Process Misc Racks/Chases-Ion Pumped Tank	20	24JAN08	21FEB08						
XT_1062	Vendor Fab/Ship Tank - FEE Diagnostic Tank	60	25FEB08	16MAY08						
XT_6673	Vendor Fab/Ship Turbo System - FEE Diagnostic Ta	60	25FEB08	16MAY08						
XT_6678	Vendor Ship Scroll Dry Pump-FEE Diagnostic Tank	60	25FEB08	16MAY08						
XT_6683	Vendor Fab/Ship Imager Stages - FEE Diagnostic T	60	25FEB08	16MAY08						
XT_6688	Vendor Fab/Ship Stand - FEE Diagnostic Tank	60	25FEB08	16MAY08						
XT_6693	Vendor Fab/Ship Motor Driver -FEE Diagnostic Tnk	60	25FEB08	16MAY08						
XT_6698	Vendor Fab/Ship EPICS IF - FEE Diagnostic Tank	60	25FEB08	16MAY08						
XT_6703	Vendor Fab/Ship Misc Racks/Chases-FEE Diagnostic	60	25FEB08	16MAY08						
XT_7704	Vendor Fab/Ship Tank - Ion Pumped Tank	60	25FEB08	16MAY08						
XT_7709	Vendor Fab/Ship Ion Pump - Ion Pumped Tank	60	25FEB08	16MAY08						
XT_7714	Vendor Ship Misc - Ion Pumped Tank	60	25FEB08	16MAY08						
XT_7719	Vendor Fab/Ship Imager Stages - Ion Pumped Tank	60	25FEB08	16MAY08						
XT_7724	Vendor Fab/Ship Stand - Ion Pumped Tank	60	25FEB08	16MAY08						
XT_7729	Vendor Fab/Ship Motor Driver -Ion Pumped Tank	60	25FEB08	16MAY08						
XT_7734	Vendor Fab/Ship EPICS IF - Ion Pumped Tank	60	25FEB08	16MAY08						
XT_7739	Vendor Fab/Ship Misc Racks/Chases-Ion Pumped Tan	60	25FEB08	16MAY08						
XT_1002	Procure Computer - Ion Pumped Tank	60	02MAY08	28JUL08						
XT_1013	AVAIL: Ion Pumped Tank at LLNL for Assembly	0		16MAY08						
XT_1072	RECV: Tank - FEE Diagnostic Tank	0		16MAY08						
XT_6674	RECV: Turbo System - FEE Diagnostic Tank	0		16MAY08						
XT_6679	RECV: Scroll Dry Pump-FEE Diagnostic Tnk	0		16MAY08						
XT_6684	RECV: Imager Stages - FEE Diagnostic Tank	0		16MAY08						
XT_6689	RECV: Stand - FEE Diagnostic Tank	0		16MAY08						
XT_6694	RECV: Motor Driver - FEE Diagnostic Tank	0		16MAY08						
XT_6699	RECV: EPICS IF - FEE Diagnostic Tank	0		16MAY08						
XT_6704	RECV: Misc Racks/Chases-FEE Diagnostic Tnk	0		16MAY08						

Start Date 01JUN01
Finish Date 31MAR09
Data Date 01OCT04
Run Date 29APR05 13:49

**LCLS
INTEGRATED SCHEDULE**

X-Ray Transport & Diagnostics



Activity ID	Activity Description	Orig Dur	Early Start	Early Finish							
					2004	2005	2006	2007	2008	2009	
XT_7705	RECV: Tank - Ion Pumped Tank	0		16MAY08				RECV: Tank - Ion Pumped Tank			
XT_7710	RECV: Ion Pump - Ion Pumped Tank	0		16MAY08				RECV: Ion Pump - Ion Pumped Tank			
XT_7715	RECV: Misc - Ion Pumped Tank	0		16MAY08				RECV: Misc - Ion Pumped Tank			
XT_7720	RECV: Imager Stages - Ion Pumped Tank	0		16MAY08				RECV: Imager Stages - Ion Pumped Tank			
XT_7725	RECV: Stand - Ion Pumped Tank	0		16MAY08				RECV: Stand - Ion Pumped Tank			
XT_7730	RECV: Motor Driver - Ion Pumped Tank	0		16MAY08				RECV: Motor Driver - Ion Pumped Tank			
XT_7735	RECV: EPICS IF - Ion Pumped Tank	0		16MAY08				RECV: EPICS IF - Ion Pumped Tank			
XT_7740	RECV: Misc Racks/Chases-Ion Pumped Tank	0		16MAY08				RECV: Misc Racks/Chases-Ion Pumped Tank			
XT_994	Assemble - FEE Diagnostic Tank	100	19MAY08	08OCT08				Assemble - FEE Diagnostic Tank			
XT_1003	Assemble - Ion Pumped Tank	60	29JUL08	21OCT08				Assemble - Ion Pumped Tank			
1.05.05.04 Commissioning Diagnostics											
XT_478	Specification - Spectral Measurement	190	03JAN05*	30SEP05				Specification - Spectral Measurement			
XT_418	Specification - Total Energy Measurement	60	03FEB05*	28APR05				Specification - Total Energy Measurement			
XT_4418	Prototype - Total Energy Measurement	60	29APR05	25JUL05				Prototype - Total Energy Measurement			
XT_419	Design - Total Energy Measurement	250	29APR05	09MAY06				Design - Total Energy Measurement			
XT_479	Design - Spectral Measurement	120	03OCT05*	07APR06				Design - Spectral Measurement			
XT_539	COMP: Design Package - Spectral Measurement	0		07APR06				COMP: Design Package - Spectral Measurement			
XT_481	Prep Bid Data Acquisition- Spectral Measurement	5	02OCT06	06OCT06				Prep Bid Data Acquisition- Spectral Measurement			
XT_8842	Prep Bid Pkg Grating - Spectral Measurement	5	02OCT06	06OCT06				Prep Bid Pkg Grating - Spectral Measurement			
XT_8845	Prep Bid Pkg Low Energy - Spectral Measurement	5	02OCT06	06OCT06				Prep Bid Pkg Low Energy - Spectral Measurement			
XT_8846	Prep Bid Rails & Stages - Spectral Measurement	5	02OCT06	06OCT06				Prep Bid Rails & Stages - Spectral Measurement			
XT_8855	Prep Bid Pkg High Energy - Spectral Measurement	5	02OCT06	06OCT06				Prep Bid Pkg High Energy - Spectral Measurement			
XT_422	Vendor Fab Data Acquisit - Total Energy Measure	60	03OCT06	11JAN07				Vendor Fab Data Acquisit - Total Energy Measure			
XT_7801	Procure Production Unit-Total Energy Measurement	60	03OCT06	11JAN07				Procure Production Unit-Total Energy Measurement			
XT_561	Bid Process Data Acquisition- Spectral Measure	20	09OCT06	03NOV06				Bid Process Data Acquisition- Spectral Measure			
XT_8852	Bid Process Grating - Spectral Measurement	20	09OCT06	03NOV06				Bid Process Grating - Spectral Measurement			
XT_8856	Bid Process Rails & Stages -Spectral Measurement	20	09OCT06	03NOV06				Bid Process Rails & Stages -Spectral Measurement			
XT_8865	Bid Process Low Energy - Spectral Measurement	20	09OCT06	03NOV06				Bid Process Low Energy - Spectral Measurement			
XT_8895	Bid Process - Spectral Measurement	20	09OCT06	03NOV06				Bid Process - Spectral Measurement			
XT_581	Vendor Fab Data Acquisition-Spectral Measurement	40	07NOV06	19JAN07				Vendor Fab Data Acquisition-Spectral Measurement			
XT_8872	Vendor Fab Grating - Spectral Measurement	40	07NOV06	19JAN07				Vendor Fab Grating - Spectral Measurement			
XT_8876	Vendor Fab Rails & Stages - Spectral Measurement	40	07NOV06	19JAN07				Vendor Fab Rails & Stages - Spectral Measurement			
XT_8935	Vendor Fab Low Energy - Spectral Measurement	40	07NOV06	19JAN07				Vendor Fab Low Energy - Spectral Measurement			
XT_8915	Vendor Fab High Energy - Spectral Measurement	60	07NOV06	16FEB07				Vendor Fab High Energy - Spectral Measurement			
XT_4993	Specification - Spatial Shape & Centroid Measure	40	09NOV06	23JAN07				Specification - Spatial Shape & Centroid Measure			
XT_40	Engineering - Commissioning Diagnostics	100	09NOV06	18APR07				Engineering - Commissioning Diagnostics			
XT_421	Assemble - Total Energy Measurement	175	12JAN07	20SEP07				Assemble - Total Energy Measurement			




Start Date 01JUN01
Finish Date 31MAR09
Data Date 01OCT04
Run Date 29APR05 13:49

© Primavera Systems, Inc.

**LCLS
INTEGRATED SCHEDULE**

X-Ray Transport & Diagnostics

Sheet 19 of 28

 Early Bar
 Progress Bar
 Critical Activity

Activity ID	Activity Description	Orig Dur	Early Start	Early Finish						
					2004	2005	2006	2007	2008	2009
XT_611	RECV: Data Acquisition- Spectral Measurement	0		19JAN07				◆RECV: Data Acquisition- Spectral Measurement		
XT_8882	RECV: Grating - Spectral Measurement	0		19JAN07				◆RECV: Grating - Spectral Measurement		
XT_8885	RECV: Low Energy - Spectral Measurement	0		19JAN07				◆RECV: Low Energy - Spectral Measurement		
XT_8886	RECV: Rails & Stages - Spectral Measurement	0		19JAN07				◆RECV: Rails & Stages - Spectral Measurement		
XT_4994	Design - Spatial Shape & Centroid Measure	200	24JAN07	05NOV07				Design - Spatial Shape & Centroid Measure		
XT_8925	RECV: High Energy - Spectral Measurement	0		16FEB07				◆RECV: High Energy - Spectral Measurement		
XT_4888	Assemble at LLNL - Spectral Measurement	40	20FEB07	16APR07				▲Assemble at LLNL - Spectral Measurement		
XT_7793	REQD: Near Hall Beneficial Occup -Comm Diag Tank	1	21MAR07	21MAR07				REQD: Near Hall Beneficial Occup -Comm Diag Tank		
XT_4898	Test at LLNL - Spectral Measurement	10	17APR07	30APR07				▲Test at LLNL - Spectral Measurement		
XT_4908	Ship to SLAC - Spectral Measurement	10	01MAY07	14MAY07				▲Ship to SLAC - Spectral Measurement		
XT_411	Specification - Comm Diagnostic Tank	40	07MAY07*	02JUL07				▲Specification - Comm Diagnostic Tank		
XT_485	Specification - Spatial Coherence	40	07MAY07*	02JUL07				▲Specification - Spatial Coherence		
XT_5000	Specification - Divergence Measurement	40	07MAY07*	02JUL07				▲Specification - Divergence Measurement		
XT_4918	Assemble at SLAC - Spectral Measurement	10	15MAY07	29MAY07				▲Assemble at SLAC - Spectral Measurement		
XT_4928	AVAIL: Spectral Measurement	0		29MAY07				◆AVAIL: Spectral Measurement		
XT_486	Design - Spatial Coherence	120	03JUL07	08JAN08				▲Design - Spatial Coherence		
XT_412	Design - Comm Diagnostic Tank	125	03JUL07	15JAN08				▲Design - Comm Diagnostic Tank		
XT_5111	Design - Divergence Measurement	200	03JUL07	01MAY08				Design - Divergence Measurement		
XT_5014	COMP: Design - Spatial Shape & Centroid Measure	0		05NOV07				COMP: Design - Spatial Shape & Centroid Measure		
XT_780	Prepare Bid Pkg -Spatial Shape & Centroid Measur	5	06NOV07	12NOV07				Prepare Bid Pkg -Spatial Shape & Centroid Measur		
XT_781	Bid Process - Spatial Shape & Centroid Measure	20	13NOV07	12DEC07				Bid Process - Spatial Shape & Centroid Measure		
XT_783	Vendor Fab/Ship - Spatial Shape & Centroid Measu	60	14DEC07	26MAR08				Vendor Fab/Ship - Spatial Shape & Centroid Measu		
XT_686	COMP: Design - Spatial Coherence	0		08JAN08				COMP: Design - Spatial Coherence		
XT_2555	Prep Bid Pkg High Energy Slit -Spatial Coherence	10	09JAN08	23JAN08				Prep Bid Pkg High Energy Slit -Spatial Coherence		
XT_487	Prep Bid Pkg Low Energy Slit - Spatial Coherence	10	09JAN08	23JAN08				Prep Bid Pkg Low Energy Slit - Spatial Coherence		
XT_7741	COMP: Design - Comm Diagnostic Tank	0		15JAN08				COMP: Design - Comm Diagnostic Tank		
XT_7742	Prep Bid Pkg Tank - Comm Diagnostic Tank	5	16JAN08	23JAN08				Prep Bid Pkg Tank - Comm Diagnostic Tank		
XT_7743	Prep Bid Pkg Scroll Dry Pump-Comm Diagnostic Tnk	5	16JAN08	23JAN08				Prep Bid Pkg Scroll Dry Pump-Comm Diagnostic Tnk		
XT_7744	Prep Bid Pkg Turbo System - Comm Diagnostic Tank	5	16JAN08	23JAN08				Prep Bid Pkg Turbo System - Comm Diagnostic Tank		
XT_7745	Prep Bid Pkg Imager Stages - Comm Diagnostic Tan	5	16JAN08	23JAN08				Prep Bid Pkg Imager Stages - Comm Diagnostic Tan		
XT_7746	Prep Bid Pkg Stand - Comm Diagnostic Tank	5	16JAN08	23JAN08				Prep Bid Pkg Stand - Comm Diagnostic Tank		
XT_7747	Prep Bid Pkg Motor Driver - Comm Diagnostic Tank	5	16JAN08	23JAN08				Prep Bid Pkg Motor Driver - Comm Diagnostic Tank		
XT_7748	Prep Bid Pkg EPICS IF - Comm Diagnostic Tank	5	16JAN08	23JAN08				Prep Bid Pkg EPICS IF - Comm Diagnostic Tank		
XT_7749	Prep Bid Pk 2 Axis Rail Adjus-Comm Diagnostic Ta	5	16JAN08	23JAN08				Prep Bid Pk 2 Axis Rail Adjus-Comm Diagnostic Ta		
XT_251	Bid Process High Energy Slit - Spatial Coherence	20	24JAN08	21FEB08				Bid Process High Energy Slit - Spatial Coherence		
XT_657	Bid Process Low Energy Slit - Spatial Coherence	20	24JAN08	21FEB08				Bid Process Low Energy Slit - Spatial Coherence		
XT_7751	Bid Process Tank - Comm Diagnostic Tank	20	24JAN08	21FEB08				Bid Process Tank - Comm Diagnostic Tank		

Start Date 01JUN01
Finish Date 31MAR09
Data Date 01OCT04
Run Date 29APR05 13:49

© Primavera Systems, Inc.

LCLS
INTEGRATED SCHEDULE
X-Ray Transport & Diagnostics

Sheet 20 of 28

Early Bar
Progress Bar
Critical Activity

Activity ID	Activity Description	Orig Dur	Early Start	Early Finish						
					2004	2005	2006	2007	2008	2009
XT_7752	Bid Process Scroll Dry Pump-Comm Diagnostic Tank	20	24JAN08	21FEB08						
XT_7753	Bid Process Turbo System - Comm Diagnostic Tank	20	24JAN08	21FEB08						
XT_7754	Bid Process Imager Stages - Comm Diagnostic Tank	20	24JAN08	21FEB08						
XT_7755	Bid Process Stand - Comm Diagnostic Tank	20	24JAN08	21FEB08						
XT_7756	Bid Process Motor Driver - Comm Diagnostic Tank	20	24JAN08	21FEB08						
XT_7757	Bid Process EPICS IF - Comm Diagnostic Tank	20	24JAN08	21FEB08						
XT_7758	Bid Process 2 Axis Rail Adjus-Comm Diagnostic Tank	20	24JAN08	21FEB08						
XT_7775	Assemble - Comm Diagnostic Tank	80	24JAN08	15MAY08						
XT_253	Vendor Fab High Energy Slit - Spatial Coherence	60	25FEB08	16MAY08						
XT_707	Vendor Fab Low Energy Slit - Spatial Coherence	60	25FEB08	16MAY08						
XT_7767	Vendor Fab/Ship Tank - Comm Diagnostic Tank	60	25FEB08	16MAY08						
XT_7789	RECV: Material -Spatial Shape & Centroid Measure	0		26MAR08						
XT_899	Assemble -Spatial Shape & Centroid Measure	80	27MAR08	18JUL08						
XT_5121	COMP: Design - Divergence Measurement	0		01MAY08						
XT_51112	Prepare Bid Pkg - Divergence Measurement	5	02MAY08	08MAY08						
XT_51122	Bid Process - Divergence Measurement	20	09MAY08	06JUN08						
XT_254	RECV: Low Energy Slit - Spatial Coherence	0		16MAY08						
XT_717	RECV: Low Energy Slit - Spatial Coherence	0		16MAY08						
XT_7776	RECV: Tank - Comm Diagnostic Tank	0		16MAY08						
XT_488	Assemble - Spatial Coherence	60	19MAY08	12AUG08						
XT_51142	Vendor Fab/Ship - Divergence Measurement	60	10JUN08	03SEP08						
XT_786	Ship to SLAC-Spatial Shape & Centroid Measure	5	21JUL08	25JUL08						
XT_787	Unpack and Assemble at SLAC-Spatial Shape & Cent	10	28JUL08	08AUG08						
XT_788	AVAIL: Spatial Shape & Centroid Measure	0		08AUG08						
XT_798	REQD: Near Hall Benefic Occup-Spatial & Centroid	0		08AUG08						
XT_518	Test at LLNL - Spatial Coherence	20	13AUG08	10SEP08						
XT_51152	RECV: Material - Divergence Measurement	0		03SEP08						
XT_5557	Assemble - Divergence Measurement	40	04SEP08	29OCT08						
XT_528	Ship to SLAC - Spatial Coherence	5	11SEP08	17SEP08						
XT_538	Assemble - Spatial Coherence	10	18SEP08	01OCT08						
XT_548	AVAIL: Spatial Coherence	0		01OCT08						
XT_5567	Ship to SLAC-Divergence Measurement	5	30OCT08	05NOV08						
XT_5577	Unpack and Assemble at SLAC-Divergence Measurement	10	06NOV08	19NOV08						
XT_5587	AVAIL: Divergence Measurement	0		19NOV08						
XT_5607	REQD: Near Hall Beneficial Occup-Divergence Measurement	0		19NOV08						

Start Date 01JUN01
Finish Date 31MAR09
Data Date 01OCT04
Run Date 29APR05 13:49

© Primavera Systems, Inc.

**LCLS
INTEGRATED SCHEDULE**

X-Ray Transport & Diagnostics

Sheet 21 of 28

Early Bar
Progress Bar
Critical Activity

Activity ID	Activity Description	Orig Dur	Early Start	Early Finish						
					2004	2005	2006	2007	2008	2009
1.05.06 X-Ray Transport System Installation & Alignment										
1.05.06.01 Front End Enclosure Install										
XT_810	Install - Slit/Collimator A	40	19APR07	14JUN07				▲▲▲ Install - Slit/Collimator A		
XT_4005	Leak Check - Slit/Collimator A	30	15JUN07	27JUL07				▲▲▲ Leak Check - Slit/Collimator A		
XT_655	REQD: FEE Beneficial Occupancy	0		09JUL07				◆ REQD: FEE Beneficial Occupancy		
XT_0121	Install FEE - Slow Controls	40	10JUL07	04SEP07				▲▲▲ Install FEE - Slow Controls		
XT_2010	Shipping / Install - Gas Attenuator	40	10JUL07	04SEP07				▲▲▲ Shipping / Install - Gas Attenuator		
XT_502	Install - Solid Attenuator	40	10JUL07	04SEP07				▲▲▲ Install - Solid Attenuator		
XT_820	Fab/Assemble/Test - Const \$ - Slit/Co	100	10JUL07	29NOV07				▲▲▲ Fab/Assemble/Test - Const \$ - Slit/Co		
XT_800	Test Beam Line - Slit/Collimator A	30	30JUL07	10SEP07				▲▲▲ Test Beam Line - Slit/Collimator A		
XT_0155	Install FEE - Femto Controls	40	28AUG07	23OCT07				▲▲▲ Install FEE - Femto Controls		
XT_53	Install FEE - Fast Controls	40	28AUG07	23OCT07				▲▲▲ Install FEE - Fast Controls		
XT_2011	Acceptance Test - Gas Attenuator	20	05SEP07	02OCT07				▲▲▲ Acceptance Test - Gas Attenuator		
XT_2012	Assemble - Beamline Test - Gas Attenuator	20	05SEP07	02OCT07				▲▲▲ Assemble - Beamline Test - Gas Attenuator		
XT_5002	Test - Solid Attenuator	20	05SEP07	02OCT07				▲▲▲ Test - Solid Attenuator		
XT_0122	Integrate FEE - Slow Controls	40	05SEP07	30OCT07				▲▲▲ Integrate FEE - Slow Controls		
XT_7823	Fab/Assemble/Test - Const \$ - Flipper Mirror	100	06SEP07	13FEB08				▲▲▲ Fab/Assemble/Test - Const \$ - Flipper Mirror		
XT_2111	Install Berilium Valves - FEE Mech/Vac	5	17SEP07	21SEP07				▲▲▲ Install Berilium Valves - FEE Mech/Vac		
XT_2112	Install Isolation Valve - FEE Mech/Vac	5	17SEP07	21SEP07				▲▲▲ Install Isolation Valve - FEE Mech/Vac		
XT_2113	Install Ion Pumps - FEE Mech/Vac	5	17SEP07	21SEP07				▲▲▲ Install Ion Pumps - FEE Mech/Vac		
XT_2115	Install Ion Gauges - FEE Mech/Vac	5	17SEP07	21SEP07				▲▲▲ Install Ion Gauges - FEE Mech/Vac		
XT_2116	Install Spools - FEE Mech/Vac	5	17SEP07	21SEP07				▲▲▲ Install Spools - FEE Mech/Vac		
XT_2118	Install Stands - FEE Mech/Vac	5	17SEP07	21SEP07				▲▲▲ Install Stands - FEE Mech/Vac		
XT_5	Install Isolation Valve - FEE Mech/Vac	5	17SEP07	21SEP07				▲▲▲ Install Isolation Valve - FEE Mech/Vac		
XT_6	Test - FEE Mech/Vac	60	24SEP07	03JAN08				▲▲▲ Test - FEE Mech/Vac		
XT_5003	COMP: Solid Attenuator Installed & Commissioned	0		16OCT07				◆ COMP: Solid Attenuator Installed & Commissioned		
XT_0156	Integrate FEE - Femto Controls	40	24OCT07	07JAN08				▲▲▲ Integrate FEE - Femto Controls		
XT_54	Integrate FEE - Fast Controls	40	24OCT07	07JAN08				▲▲▲ Integrate FEE - Fast Controls		
XT_2014	COMP: Gas Attenuator Installed & Commissioned	0		31OCT07				◆ COMP: Gas Attenuator Installed & Commissioned		
XT_0117	Test FEE - Slow Controls	20	31OCT07	29NOV07				▲▲▲ Test FEE - Slow Controls		
XT_801	COMP: Slit/Collimator A	0		29NOV07				◆ COMP: Slit/Collimator A		
XT_0147	Test FEE - Fast Controls	40	08JAN08	05MAR08				▲▲▲ Test FEE - Fast Controls		
XT_0158	Test FEE - Femto Controls	40	08JAN08	05MAR08				▲▲▲ Test FEE - Femto Controls		
XT_1111	Install - Fixed Mask 1	20	20FEB08	18MAR08				▲▲▲ Install - Fixed Mask 1		
XT_1136	Install - Fixed Mask 2	20	20FEB08	18MAR08				▲▲▲ Install - Fixed Mask 2		
XT_1154	Install - Fixed Mask 3	20	20FEB08	18MAR08				▲▲▲ Install - Fixed Mask 3		
XT_281	Install - Wave Model	40	28FEB08	23APR08				▲▲▲ Install - Wave Model		



**LCLS
INTEGRATED SCHEDULE**

X-Ray Transport & Diagnostics

Start Date 01JUN01
Finish Date 31MAR09
Data Date 01OCT04
Run Date 29APR05 13:49

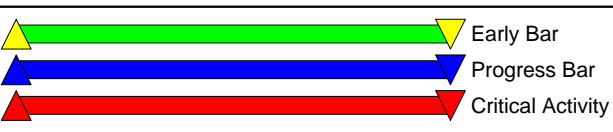
Activity ID	Activity Description	Orig Dur	Early Start	Early Finish						
					2004	2005	2006	2007	2008	2009
XT_287	Install - Monte Carlo Model	40	28FEB08	23APR08						Install - Monte Carlo Model
XT_1110	Test - Fixed Mask 1	60	19MAR08	11JUN08						Test - Fixed Mask 1
XT_1134	Test - Fixed Mask 2	60	19MAR08	11JUN08						Test - Fixed Mask 2
XT_1152	Test - Fixed Mask 3	60	19MAR08	11JUN08						Test - Fixed Mask 3
XT_105	Install Ion Gauges - Electron Dump Mech/Vac	5	31MAR08	04APR08						Install Ion Gauges - Electron Dump Mech/Vac
XT_115	Install Stands - Electron Dump Mech/Vac	5	31MAR08	04APR08						Install Stands - Electron Dump Mech/Vac
XT_125	Install Ion Pumps - Electron Dump Mech/Vac	5	31MAR08	04APR08						Install Ion Pumps - Electron Dump Mech/Vac
XT_95	Install Vacuum Pipe - Electron Dump Mech/Vac	5	31MAR08	04APR08						Install Vacuum Pipe - Electron Dump Mech/Vac
XT_96	Test Pipe - Electron Dump Mech/Vac	10	07APR08	18APR08						Test Pipe - Electron Dump Mech/Vac
XT_7034	Install - Slit/Collimator B	40	18APR08	13JUN08						Install - Slit/Collimator B
XT_2822	Test - Wave Model	20	24APR08	21MAY08						Test - Wave Model
XT_288	Test - Monte Carlo Model	20	24APR08	21MAY08						Test - Monte Carlo Model
XT_1109	Test - Beamline - Fixed Mask 1	20	12JUN08	10JUL08						Test - Beamline - Fixed Mask 1
XT_1135	Test - Beamline - Fixed Mask 2	20	12JUN08	10JUL08						Test - Beamline - Fixed Mask 2
XT_1153	Test - Beamline - Fixed Mask 3	20	12JUN08	10JUL08						Test - Beamline - Fixed Mask 3
XT_7035	Leak Check - Slit/Collimator B	60	16JUN08	09SEP08						Leak Check - Slit/Collimator B
XT_2832	Commission - Wave Model	20	13AUG08	10SEP08						Commission - Wave Model
XT_348	Commission - Monte Carlo Model	20	13AUG08	10SEP08						Commission - Monte Carlo Model
XT_0159	COMP: FEE Femto Controls	0		10SEP08						COMP: FEE Femto Controls
XT_1108	COMP: Fixed Mask 1 Installed & Commissioned	0		10SEP08						COMP: Fixed Mask 1 Installed & Commissioned
XT_1137	COMP: Fixed Mask 2	0		10SEP08						COMP: Fixed Mask 2
XT_114	COMP: FEE Fast Controls	0		10SEP08						COMP: FEE Fast Controls
XT_1155	COMP: Fixed Mask 3	0		10SEP08						COMP: Fixed Mask 3
XT_282	COMP: Wave Model	0		10SEP08						COMP: Wave Model
XT_289	COMP: Monte Carlo Model	0		10SEP08						COMP: Monte Carlo Model
XT_98	COMP: Electron Dump Mech/Vac Install & Commission	0		10SEP08						COMP: Electron Dump Mech/Vac Install & Commission
XT_7036	Test Beam Line - Slit/Collimator B	40	10SEP08	04NOV08						Test Beam Line - Slit/Collimator B
XT_7046	Fab/Assemble/Test - Const \$ - Slit/Col	100	10SEP08	11FEB09						Fab/Assemble/Test - Const \$ - Slit/Col
XT_995	Install - FEE Diagnostic Tank	60	09OCT08	15JAN09						Install - FEE Diagnostic Tank
XT_1004	Install - Ion Pumped Tank	60	22OCT08	28JAN09						Install - Ion Pumped Tank
XT_996	Test - FEE Diagnostic Tank	20	16JAN09	12FEB09						Test - FEE Diagnostic Tank
XT_1005	Test - Ion Pumped Tank	20	29JAN09	25FEB09						Test - Ion Pumped Tank
XT_997	COMP: FEE Diagnostic Tank	0		26FEB09						COMP: FEE Diagnostic Tank
XT_1006	COMP: Ion Pumped Tank	0		11MAR09						COMP: Ion Pumped Tank
XT_7038	COMP: Slit/Collimator B Installed & Commission	0		11MAR09						COMP: Slit/Collimator B Installed & Commission
1.05.06.02 Near Hall Install										
XT_775	Install Vacuum Piping - NH Mech/Vac - H3	5	18APR07	24APR07						Install Vacuum Piping - NH Mech/Vac - H3

Start Date 01JUN01
Finish Date 31MAR09
Data Date 01OCT04
Run Date 29APR05 13:49

© Primavera Systems, Inc.

**LCLS
INTEGRATED SCHEDULE**

X-Ray Transport & Diagnostics



Activity ID	Activity Description	Orig Dur	Early Start	Early Finish						
					2004	2005	2006	2007	2008	2009
XT_785	Install Ion Pumps - NH Mech/Vac - H3	5	18APR07	24APR07				Install Ion Pumps - NH Mech/Vac - H3		
XT_805	Install Ion Gauges - NH Mech/Vac - H3	5	18APR07	24APR07				Install Ion Gauges - NH Mech/Vac - H3		
XT_815	Install Stands - NH Mech/Vac - H3	5	18APR07	24APR07				Install Stands - NH Mech/Vac - H3		
XT_776	Test - Near Hall Mech/Vac - H3	10	25APR07	08MAY07				Test - Near Hall Mech/Vac - H3		
XT_0128	Install Near Hall - Slow Controls	40	08MAY07	03JUL07				Install Near Hall - Slow Controls		
XT_777	Commission - Near Hall Mech/Vac - H3	20	09MAY07	06JUN07				Commission - Near Hall Mech/Vac - H3		
XT_778	COMP: Near Hall Mech/Vac - H3	1	07JUN07	07JUN07				COMP: Near Hall Mech/Vac - H3		
XT_0129	Integrate Near Hall - Slow Controls	40	05JUL07	29AUG07				Integrate Near Hall - Slow Controls		
XT_695	Install - Indirect Imager	60	10JUL07	02OCT07				Install - Indirect Imager		
XT_507	Install - Near Hall Optics Tank	60	19JUL07	11OCT07				Install - Near Hall Optics Tank		
XT_0130	Test Near Hall - Slow Controls	20	30AUG07	27SEP07				Test Near Hall - Slow Controls		
XT_4433	Visible Calibration - Direct Imager	5	03OCT07	09OCT07				Visible Calibration - Direct Imager		
XT_4435	X-Ray Calibration - Direct Imager	10	10OCT07	23OCT07				X-Ray Calibration - Direct Imager		
XT_508	Integrate & Test - Near Hall Optics Tank	10	12OCT07	25OCT07			Integrate & Test - Near Hall Optics Tank			
XT_696	Test - Indirect Imager	20	24OCT07	20NOV07				Test - Indirect Imager		
XT_568	Commission - Near Hall Optics Tank	10	26OCT07	08NOV07			Commission - Near Hall Optics Tank			
XT_509	COMP: Near Hall Optics Tank Install at SLAC	0		08NOV07			COMP: Near Hall Optics Tank Install at SLAC			
XT_697	COMP: Indirect Imager Installed & Commissioned	0		06DEC07			COMP: Indirect Imager Installed & Commissioned			
XT_0461	Install Ion Gauges - NH Mech/Vac - H1	5	22JAN08	28JAN08				Install Ion Gauges - NH Mech/Vac - H1		
XT_0462	Install Spools - NH Mech/Vac - H1	5	22JAN08	28JAN08				Install Spools - NH Mech/Vac - H1		
XT_0463	Install Stands - NH Mech/Vac - H1	5	22JAN08	28JAN08				Install Stands - NH Mech/Vac - H1		
XT_330	Install Isolation Valves - NH Mech/Vac - H1	5	22JAN08	28JAN08				Install Isolation Valves - NH Mech/Vac - H1		
XT_340	Install Berilium Valves - NH Mech/Vac - H1	5	22JAN08	28JAN08				Install Berilium Valves - NH Mech/Vac - H1		
XT_350	Install Vacuum Piping - NH Mech/Vac - H1	5	22JAN08	28JAN08				Install Vacuum Piping - NH Mech/Vac - H1		
XT_360	Install Ion Pumps - NH Mech/Vac - H1	5	22JAN08	28JAN08				Install Ion Pumps - NH Mech/Vac - H1		
XT_3666	Install Ion Gauges - NH Mech/Vac - H2	5	22JAN08	28JAN08				Install Ion Gauges - NH Mech/Vac - H2		
XT_3668	Install Stands - NH Mech/Vac - H2	5	22JAN08	28JAN08				Install Stands - NH Mech/Vac - H2		
XT_3669	Install Isolation Valves - NH Mech/Vac - H2	5	22JAN08	28JAN08				Install Isolation Valves - NH Mech/Vac - H2		
XT_3670	Install Berilium Valves - NH Mech/Vac - H2	5	22JAN08	28JAN08				Install Berilium Valves - NH Mech/Vac - H2		
XT_3671	Install Vacuum Piping - NH Mech/Vac - H2	5	22JAN08	28JAN08				Install Vacuum Piping - NH Mech/Vac - H2		
XT_3672	Install Ion Pumps - NH Mech/Vac - H2	5	22JAN08	28JAN08				Install Ion Pumps - NH Mech/Vac - H2		
XT_660	Test - Near Hall Mech/Vac - H1	10	29JAN08	11FEB08				Test - Near Hall Mech/Vac - H1		
XT_676	Test - Near Hall Mech/Vac - H2	10	29JAN08	11FEB08				Test - Near Hall Mech/Vac - H2		
XT_677	Commission - Near Hall Mech/Vac - H2	20	12FEB08	11MAR08				Commission - Near Hall Mech/Vac - H2		
XT_680	Commission - Near Hall Mech/Vac - H1	20	12FEB08	11MAR08				Commission - Near Hall Mech/Vac - H1		
XT_678	COMP: Near Hall Mech/Vac - H2	1	12MAR08	12MAR08				COMP: Near Hall Mech/Vac - H2		
XT_730	COMP: Near Hall Mech/Vac - H1	1	12MAR08	12MAR08				COMP: Near Hall Mech/Vac - H1		

Start Date 01JUN01
Finish Date 31MAR09
Data Date 01OCT04
Run Date 29APR05 13:49

© Primavera Systems, Inc.

LCLS
INTEGRATED SCHEDULE
X-Ray Transport & Diagnostics

Sheet 24 of 28

▶ Early Bar
▶ Progress Bar
▶ Critical Activity

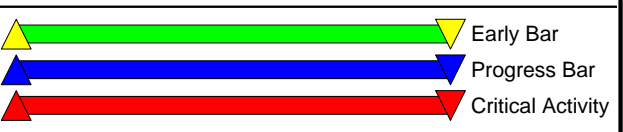
Activity ID	Activity Description	Orig Dur	Early Start	Early Finish							
					2004	2005	2006	2007	2008	2009	
XT_415	Install - Comm Diagnostic Tank	40	19MAY08	15JUL08				Install - Comm Diagnostic Tank			
XT_416	Test - Comm Diagnostic Tank	20	16JUL08	12AUG08				Test - Comm Diagnostic Tank			
XT_4997	Install - Spatial Shape & Centroid Measure	100	11AUG08	13JAN09				Install - Spatial Shape & Centroid Measure			
XT_417	COMP: Comm Diagnostic Tank Installed & Commissi	0		10SEP08				COMP: Comm Diagnostic Tank Installed & Commis			
XT_489	Install - Spatial Coherence	40	02OCT08	26NOV08				Install - Spatial Coherence			
XT_5004	Install - Divergence Measurement	40	20NOV08	29JAN09				Install - Divergence Measurement			
XT_4991	Test - Spatial Coherence	20	01DEC08	08JAN09				Test - Spatial Coherence			
XT_4998	Test - Spatial Shape & Centroid Measure	20	14JAN09	10FEB09				Test - Spatial Shape & Centroid Measure			
XT_4992	COMP: Spatial Coherence	0		22JAN09				COMP: Spatial Coherence			
XT_5005	Test - Divergence Measurement	20	30JAN09	26FEB09				Test - Divergence Measurement			
XT_4999	COMP: Spatial Shape & Centroid Measurement	0		10MAR09				COMP: Spatial Shape & Centroid Measurem			
XT_5006	COMP: Divergence Measurement	0		12MAR09				COMP: Divergence Measurement			
1.05.06.03 Tunnel Install											
XT_556	Install Isolation Valve - Tunnel Mech/Vac	80	19FEB08	10JUN08				Install Isolation Valve - Tunnel Mech/Va			
XT_626	Install Vacuum Piping - Tunnel Mech/Vac	80	19FEB08	10JUN08				Install Vacuum Piping - Tunnel Mech/Va			
XT_636	Install Ion Pumps - Tunnel Mech/Vac	80	19FEB08	10JUN08				Install Ion Pumps - Tunnel Mech/Va			
XT_646	Install Ion Gauges - Tunnel Mech/Vac	80	19FEB08	10JUN08				Install Ion Gauges - Tunnel Mech/Va			
XT_647	Install Stands - Tunnel Mech/Vac	80	19FEB08	10JUN08				Install Stands - Tunnel Mech/Va			
XT_656	Install Spools - Tunnel Mech/Vac	80	19FEB08	10JUN08				Install Spools - Tunnel Mech/Va			
XT_557	Test - Tunnel Mech/Vac	40	11JUN08	06AUG08				Test - Tunnel Mech/Vac			
XT_559	COMP: Tunnel Mech/Vac Installed & Commiss	0		10SEP08				COMP: Tunnel Mech/Vac Installed & Commis			
1.05.06.04 Far Hall Install											
XT_482	Install - Spectral Measurement	40	30MAY07	25JUL07				Install - Spectral Measurement			
XT_0134	Install Far Hall - Slow Controls	40	07JUN07	02AUG07				Install Far Hall - Slow Controls			
XT_595	Install - Direct Imager	100	19JUL07	10DEC07				Install - Direct Imager			
XT_483	Test - Spectral Measurement	20	26JUL07	22AUG07				Test - Spectral Measurement			
XT_0135	Integrate Far Hall - Slow Controls	40	03AUG07	28SEP07				Integrate Far Hall - Slow Controls			
XT_7820	Install - Flipper Mirror	40	06SEP07	31OCT07				Install - Flipper Mirror			
XT_452	Install - Total Energy Measurement	100	21SEP07	29FEB08				Install - Total Energy Measuremen			
XT_0136	Test Far Hall - Slow Controls	20	01OCT07	26OCT07				Test Far Hall - Slow Controls			
XT_7821	Leak Check - Flipper Mirror	20	01NOV07	30NOV07				Leak Check - Flipper Mirror			
XT_0112	COMP: Controls System Tests Complete	0		29NOV07				COMP: Controls System Tests Complet			
XT_7822	Test Beam Line - Flipper Mirror	20	03DEC07	15JAN08				Test Beam Line - Flipper Mirror			
XT_635	Visible Calibration - Direct Imager	5	11DEC07	02JAN08				Visible Calibration - Direct Image			
XT_273	Install - System Monochrometer	40	14DEC07	27FEB08				Install - System Monochromete			
XT_645	X-Ray Calibration - Direct Imager	5	03JAN08	09JAN08				X-Ray Calibration - Direct Image			
XT_596	Test - Direct Imager	20	10JAN08	07FEB08				Test - Direct Imager			

Start Date 01JUN01
Finish Date 31MAR09
Data Date 01OCT04
Run Date 29APR05 13:49

© Primavera Systems, Inc.

**LCLS
INTEGRATED SCHEDULE**

X-Ray Transport & Diagnostics



Activity ID	Activity Description	Orig Dur	Early Start	Early Finish	2004	2005	2006	2007	2008	2009
-------------	----------------------	----------	-------------	--------------	------	------	------	------	------	------

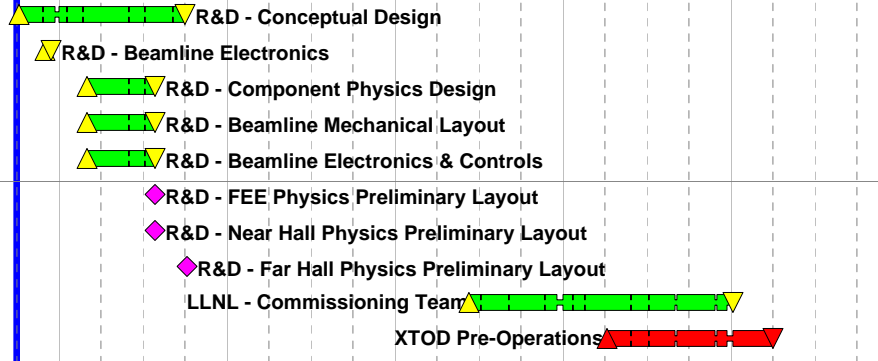
2 LCLS PROJECT - R&D, SPARES, COMMISSIONING

2.05 X-RAY TRANSPORT & DIAGNOSTICS SYSTEMS (OPC)

2.05.01 System Management & Integration

2.05.01.01 Management

XT_111	R&D - Conceptual Design	243	04OCT04*	30SEP05
XT_3486	R&D - Beamline Electronics	10	01DEC04*	14DEC04
XT_3444	R&D - Component Physics Design	103	01MAR05*	25JUL05
XT_3445	R&D - Beamline Mechanical Layout	103	01MAR05*	25JUL05
XT_3485	R&D - Beamline Electronics & Controls	103	01MAR05*	25JUL05
XT_3464	R&D - FEE Physics Preliminary Layout	0		25JUL05
XT_3474	R&D - Near Hall Physics Preliminary Layout	0		25JUL05
XT_3484	R&D - Far Hall Physics Preliminary Layout	0		03OCT05*
XT_3454	LLNL - Commissioning Team	380	08JUN07	05JAN09
XTOPS_0000	XTOD Pre-Operations	244	04APR08*	31MAR09



2.05.02 Controls

2.05.02.03 Fast Controls

XT_124	Commission FEE - Fast Controls	20	13AUG08	10SEP08
--------	--------------------------------	----	---------	---------

Commission FEE - Fast Controls

2.05.02.04 Femto Controls

XT_0157	Commission FEE - Femto Controls	20	13AUG08	10SEP08
---------	---------------------------------	----	---------	---------

Commission FEE - Femto Controls

2.05.03 Mechanical & Vacuum Subsystem

2.05.03.02 Mech/Vac Front End

XT_7	Commission - FEE Mech/Vac	40	04JAN08	03MAR08
------	---------------------------	----	---------	---------

Commission - FEE Mech/Vac

XT_97	Commission - Electron Dump Mech/Vac	20	13AUG08	10SEP08
-------	-------------------------------------	----	---------	---------

Commission - Electron Dump Mech/Vac

2.05.03.04 Mech/Vac Tunnel

XT_558	Commission - Tunnel Mech/Vac	20	13AUG08	10SEP08
--------	------------------------------	----	---------	---------

Commission - Tunnel Mech/Vac

2.05.03.05 Mech/Vac Far Hall

XT_668	Commission - Far Hall Mech/Vac - H1	10	24MAR08	04APR08
--------	-------------------------------------	----	---------	---------

Commission - Far Hall Mech/Vac - H1

XT_76	Commission - Far Hall Mech/Vac - H2	10	24MAR08	04APR08
-------	-------------------------------------	----	---------	---------

Commission - Far Hall Mech/Vac - H2

XT_84	Commission - Far Hall Mech/Vac - H3	10	05MAY08	16MAY08
-------	-------------------------------------	----	---------	---------

Commission - Far Hall Mech/Vac - H3

2.05.04 Optical Subsystem

2.05.04.02 Facility Optics

XT_8002	Commission - Slit/Collimator A	40	11SEP07	05NOV07
---------	--------------------------------	----	---------	---------

Commission - Slit/Collimator A

XT_5022	Commission - Solid Attenuator	10	03OCT07	16OCT07
---------	-------------------------------	----	---------	---------

Commission - Solid Attenuator

XT_2013	Commission - Gas Attenuator	21	03OCT07	31OCT07
---------	-----------------------------	----	---------	---------

Commission - Gas Attenuator

XT_7824	Commission - Flipper Mirror	80	16JAN08	08MAY08
---------	-----------------------------	----	---------	---------

Commission - Flipper Mirror

Start Date	01JUN01
Finish Date	31MAR09
Data Date	01OCT04
Run Date	29APR05 13:49



Activity ID	Activity Description	Orig Dur	Early Start	Early Finish						
					2004	2005	2006	2007	2008	2009
XT_1156	Commission - Fixed Mask 1	20	13AUG08	10SEP08				Commission - Fixed Mask 1		
XT_1157	Commission - Fixed Mask 2	20	13AUG08	10SEP08				Commission - Fixed Mask 2		
XT_1158	Commission - Fixed Mask 3	20	13AUG08	10SEP08				Commission - Fixed Mask 3		
XT_7037	Commission - Slit/Collimator B	80	05NOV08	11MAR09				Commission - Slit/Collimator B		
2.05.04.04 Crystals & Gratings										
XT_294	Commission - Pulse System Monochrometer	10	13AUG08	26AUG08				Commission - Pulse System Monochrometer		
2.05.05 Diagnostics Subsystem										
2.05.05.02 Modeling & Simulation										
XT_3087	R&D - Beamline Simulation	151	02MAR05*	03OCT05	R&D - Beamline Simulation					
XT_4486	R&D - FEL Monte Carlo	89	03OCT05*	23FEB06	R&D - FEL Monte Carlo					
XT_4496	R&D - Beam Line Flux Application	0		23FEB06	R&D - Beam Line Flux Application					
2.05.05.03 Facility Diagnostics										
XT_4436	Procure Spares - Direct Imager	60	03OCT06	11JAN07	Procure Spares - Direct Imager					
XT_746	Commission - Indirect Imager	10	21NOV07	06DEC07	Commission - Indirect Imager					
XT_736	Commission - Direct Imager	10	08FEB08	22FEB08	Commission - Direct Imager					
XT_1007	Commission - FEE Diagnostic Tank	10	13FEB09	26FEB09	Commission - FEE Diagnostic Tank					
XT_1015	Commission - Ion Pumped Tank	10	26FEB09	11MAR09	Commission - Ion Pumped Tank					
2.05.05.04 Commissioning Diagnostics										
XT_3300	R&D - Total Measurement	247	03JAN05*	06JAN06	R&D - Total Measurement					
XT_433	Commission - Total Energy Measurement	10	31MAR08	11APR08	Commission - Total Energy Measurement					
XT_574	Commissioning - Spectral Measurement	10	13AUG08	26AUG08	Commissioning - Spectral Measurement					
XT_427	Commission - Comm Diagnostic Tank	20	13AUG08	10SEP08	Commission - Comm Diagnostic Tank					
XT_307	Commission - Pulse Split & Delay	10	25AUG08	08SEP08	Commission - Pulse Split & Delay					
XT_5012	Commissioning - Spatial Coherence	10	09JAN09	22JAN09	Commissioning - Spatial Coherence					
XT_5009	Commission - Spatial Shape & Centroid	20	11FEB09	10MAR09	Commission - Spatial Shape & Centroid					
XT_5016	Commission - Divergence Measurement	10	27FEB09	12MAR09	Commission - Divergence Measurement					




Start Date 01JUN01
Finish Date 31MAR09
Data Date 01OCT04
Run Date 29APR05 13:49

© Primavera Systems, Inc.

**LCLS
INTEGRATED SCHEDULE**

X-Ray Transport & Diagnostics

Sheet 28 of 28

 Early Bar
 Progress Bar
 Critical Activity