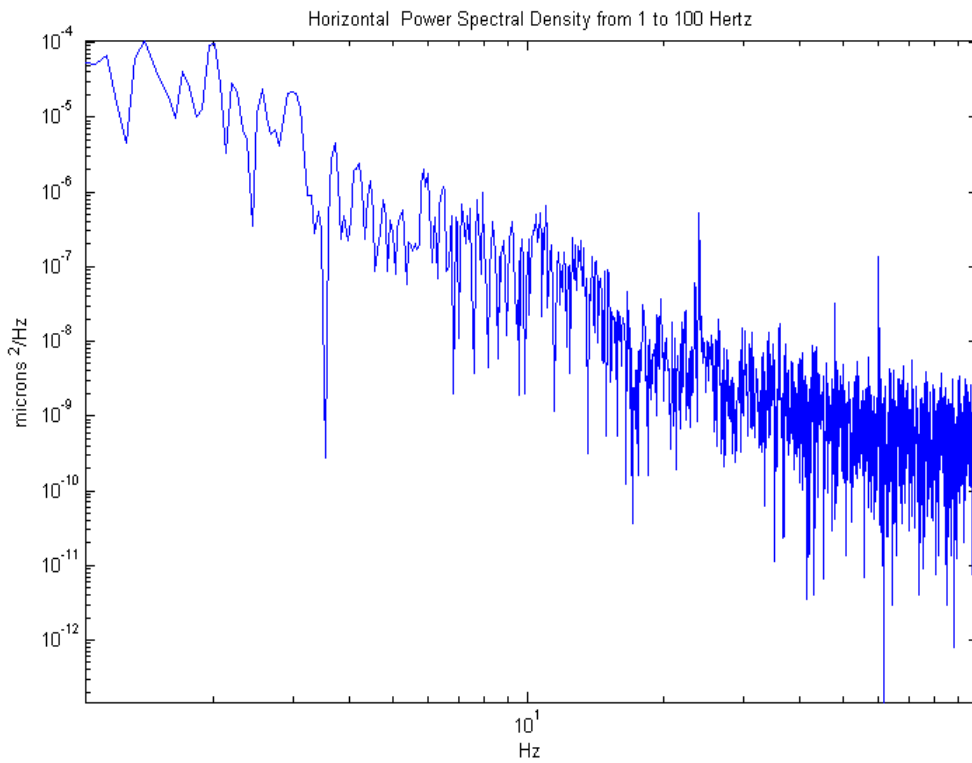
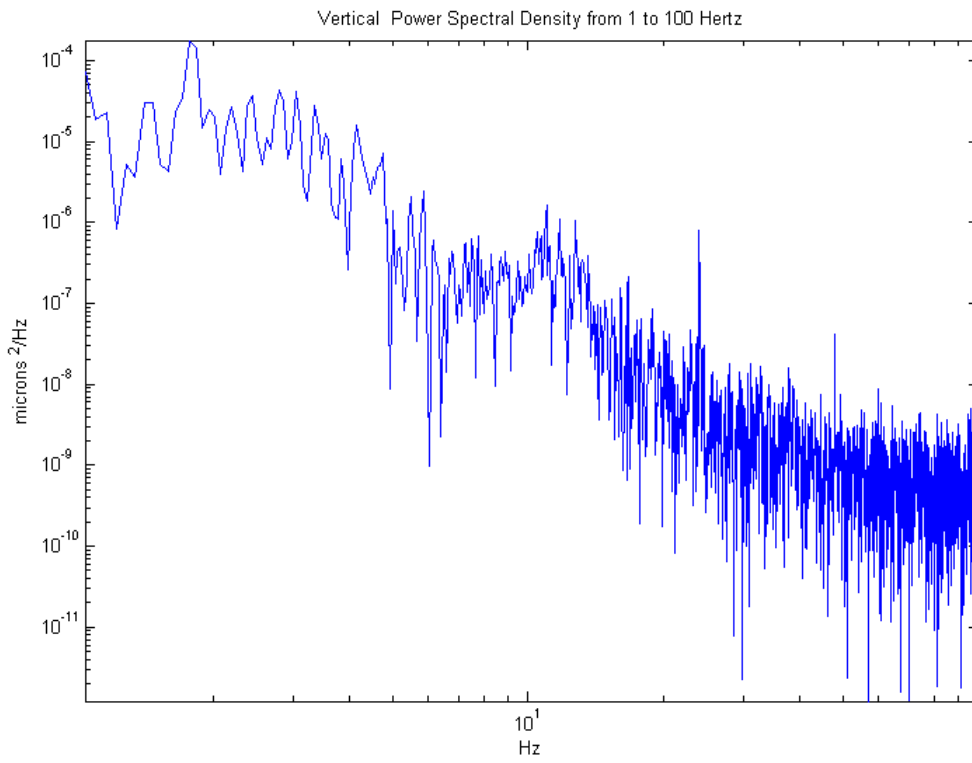


Measurements of the ground vibrations were performed in the underground cavern (the Far Experimental Hall of LCLS) where the KB System will be located. The measurements were performed in the empty hall before any of the utilities were turned on. There was therefore nothing driving the vibrations when the measurements were taken. There are still no driving forces present in the hall as of January 26, 2009 and the results shown here still represent the hall as of this day. How the utilities ultimately drive vibrations in the hall cannot be predicted at this point.

The data provided is for 2 locations (point 8 and point 9). These 2 locations were about 4 meters apart and the KB system is expected to be placed in between the 2 points, but slightly closer to point 9.

FEH point #8, save vibration_29_Oct_08_2047



Point #9, save vibration_29_Oct_08_2054

