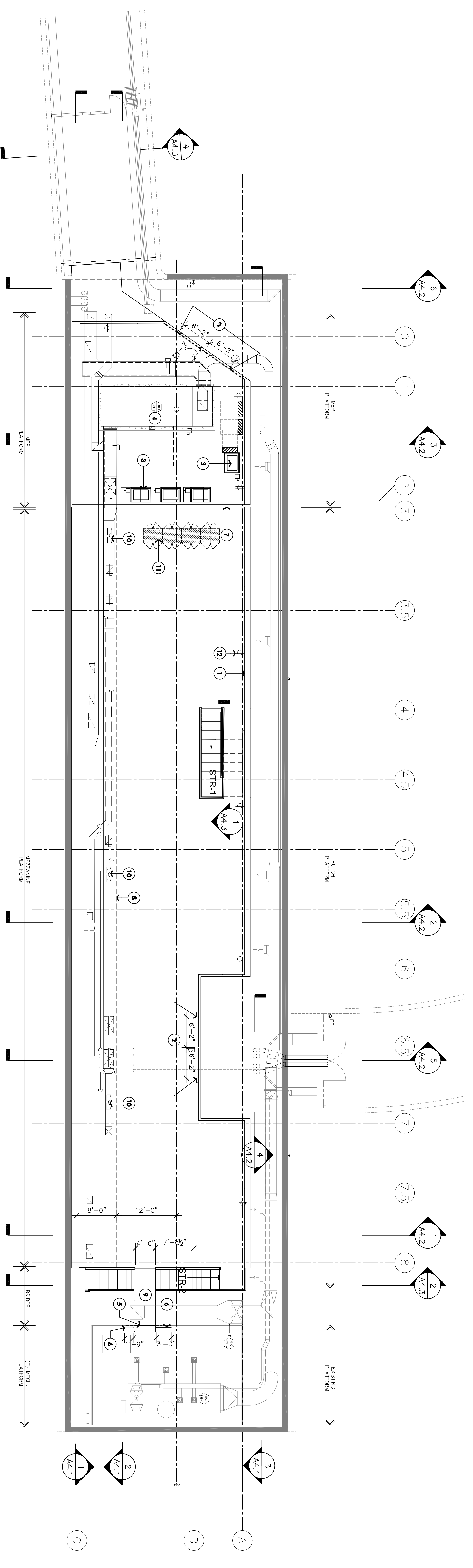


REV	DESCRIPTION	DRN	CHK	APP	DATE
1	TITLE 1				11/04/08
2	TITLE-II 80% DESIGN REVIEW				12/23/08
3	TITLE-II 90% DESIGN REVIEW				02/25/09
4	TITLE-II ARCH REFERENCE SET				03/12/09

CHECK SET 03/17/09



FLOOR PLAN GENERAL NOTES

1. SEE GENERAL NOTES SHEET A0.1.
2. ALL WORK SHOWN IN SCREEN COLOR ON MEZZANINE LEVEL ARE FOR REFERENCE ONLY. NOT IN SCOPE.

KENNOTES

- 1 GUARDRAIL. SEE ELEVATION ON SHEET ON SHEET A4.1 & DETAILS ON SHEET A8.2.
- 2 REMOVABLE GUARDRAIL.
- 3 TRANSFORMER. SEE ELEC. DRAWINGS.
- 4 AC UNIT. SEE MECH. DRAWINGS.
- 5 REMOVE (E) GUARDRAIL FOR THE NEW BRIDGE.
- 6 NEW INFILL GUARDRAIL TO MATCH EXISTING. SEE DETAIL 15/A8.2
- 7 EXPANSION JOINT COVER. SEE STRUCTURAL DRAWINGS FOR DETAILS.
- 8 STAY CLEAR ZONE. ALL MECHANICAL, DUCTS, PIPING, PENETRATIONS ON THE MEZZANINE PLATFORM TO REMAIN SOUTH OF THE STAY CLEAR LINE.
- 9 NEW BRIDGE BETWEEN MEZZANINE AND EXISTING MA.U. PLATFORM
- 10 18"x10" PENETRATION FOR FUTURE CABLES. CABLE TRAY ON MEZZANINE IS N.I.C.
- 11 SERVER RACKS (BY OWNER, N.I.C.)
- 12 POWER OUTLETS, TYP. SEE ELECTRICAL.

SCALE: 1/8"=1'-0"
DO NOT SCALE DRAWING
A2.4

SLAC ENERGY
U.S. DEPARTMENT OF ENERGY
NATIONAL ACCELERATOR LABORATORY
3800 CENTRE FOR EXPERIMENTAL PHYSICS
MILPITAS, CALIFORNIA 95031
FROM: WALTER FERNANDEZ OF SLAC
APPROVALS: _____

DGA planning | architecture | interiors
550 Ellis Street
Mountain View, CA 94040
Tel: 650.943.1660
Fax: 650.943.1670

U.S. DEPARTMENT OF ENERGY
ARCHITECTURAL
MEZZANINE FLOOR PLAN

LCIS
FEH
ARCHITECTURAL
MEZZANINE FLOOR PLAN

ID 383-901-10-C0
E