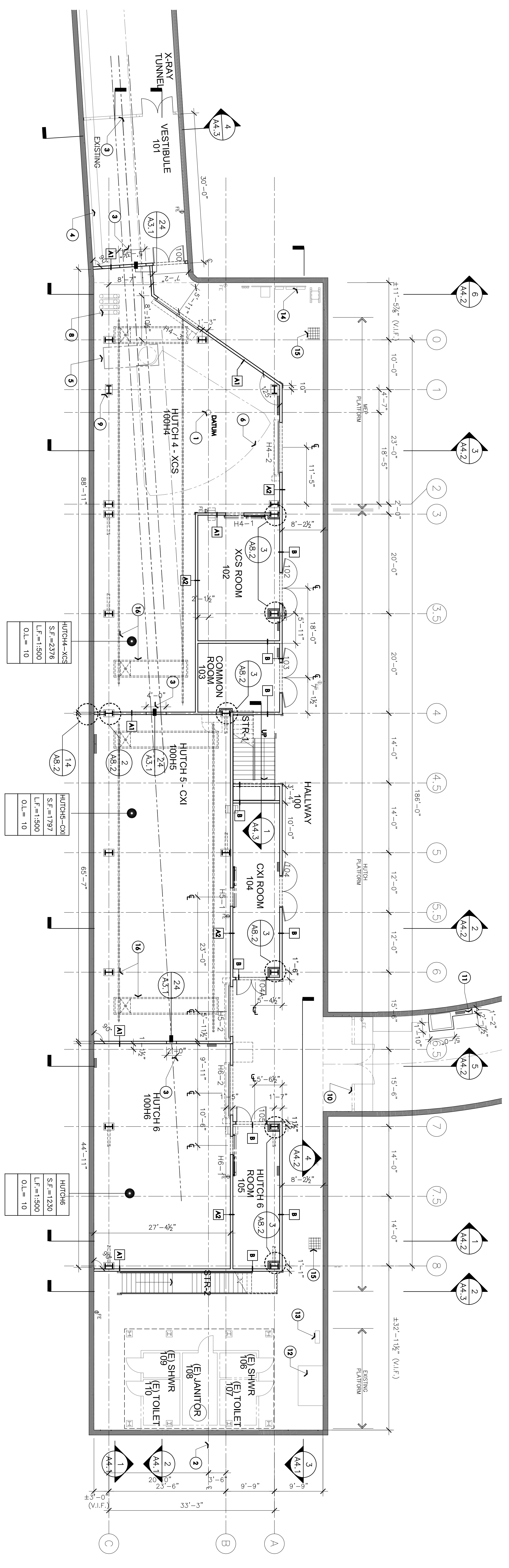


REV	DESCRIPTION	DWN	CHK	APP	DATE
1	TITLE 1	---	---	---	11/10/08
2	TITLE-II BIDD DESIGN REVIEW	---	---	---	12/23/08
3	TITLE-II 90% DESIGN REVIEW	---	---	---	12/23/08
4	TITLE-II ARCH REFERENCE SET	---	---	---	12/22/08

CHECK SET 03/17/09



- #### FLOOR PLAN GENERAL NOTES
- SEE GENERAL NOTES, SHEET A0.1
 - EXISTING FLOOR FINISH TO REMAIN IN ALL AREAS UNLESS NOTED OTHERWISE.
 - SEE EQUIPMENT PLAN SHEET A2.04 FOR OWNER PROVIDED EQUIPMENT AND THE REQUIRED CLEARANCES.

- #### KEYNOTES
- DATUM POINT, 1010.000, 2.87262 METERS Z LOCATION IN L.O.S. COORDINATES, ESTABLISH GRID LINES IN RELATION TO THE DATUM.
 - CENTRINE OF CAVERN
 - AREA FOR BEAM PIPE WALL PENETRATION, COORDINATE FINAL LOCATION IN FIELD WITH SLAC, SEE BUILDING SECTIONS ON SHEETS A4.2 FOR HEIGHTS. (E) CABLE TRAY TO REMAIN, CUT 6" FROM NEW PARTITION WALL.
 - AIR PAD FLOOR AREA (N.I.C., SHOWN FOR REFERENCE ONLY)
 - DIFFRACTOMETER EXTENSION (N.I.C. SHOWN FOR REFERENCE ONLY)
 - NOT USED
 - EXISTING HEATING & CHILLED WATER SUPPLY & RETURN PIPES, SHOWN FOR REFERENCE ONLY.
 - COLUMN BASE PLATE, SEE STRUCTURAL DRAWINGS.
 - REMOVE (E) 2-HR RATED DOOR AND FRAME, AND PARTIAL (E) 2-HR CONSTRUCTION STORE FOR RE-USE. RE-INSTALL WALL AND DOOR AT THE SAME LOCATION AT PROJECT COMPLETION. RE-INSTALL WALL TO MEET 2-HR FIRE RATING SIMILAR TO WALL TYPE-C, TYPICAL OF TWO (2) LOCATIONS:
1. ENTRANCE TO FEH CAVERN THROUGH ACCESS TUNNEL.
2. ENTRANCE TO FEH CAVERN THROUGH ACCESS TUNNEL.
 - PROVIDE NEW CONC. HOUSE KEEPING PAD FOR NEW ELEC. EQUIPMENT. PROVIDE LEVEL SURFACE WITH MIN. HEIGHT TO BE 6".
 - EXISTING PROCESS COOLING WATER SYSTEM ON HOUSE KEEPING PAD.
 - EXISTING POW CONTROL PANEL.
 - EXISTING ELECTRICAL PANELS AND TRANSFORMERS, SEE ELEC. SHEETS.
 - EXISTING DRAINAGE PIT.
 - BRIDGE GRANT ABOVE, SEE REFLECTED CEILING PLAN AND ENLARGED FLOOR PLANS A2.01 AND A2.02.

FLOOR PLAN LEGEND

