

Activity ID	Activity Description	Orig Dur	Early Start	Early Finish						
					2004	2005	2006	2007	2008	2009
1 LCLS PROJECT - PED & CONSTRUCTION										
1.09 CONVENTIONAL FACILITIES										
MS3_CF000	A&E Serv (S20, MMF, MCC not incl) Title 1 Comp	0		30APR04A	◆ A&E Serv (S20, MMF, MCC not incl) Title 1 Comp					
MS3_CF002	A&E Serv Sector 20 Title 1 Complete	0		30APR04A	◆ A&E Serv Sector 20 Title 1 Complete					
MS3_CF022	A&E Services MMF Title 1 Complete	0		30APR04A	◆ A&E Services MMF Title 1 Complete					
MS3_CF010	A&E Services Sector 20 Title 2 Complete	0		18MAR05*	◆ A&E Services Sector 20 Title 2 Complete					
MS3_CF015	A&E Services MMF Title 2 Complete	0		31MAY05*	◆ A&E Services MMF Title 2 Complete					
MSBO_000	RF Hut Beneficial Occupancy	0		07DEC05*	◆ RF Hut Beneficial Occupancy					
MS3_CF005	A&E Serv (S20, MMF, MCC not incl) Title 2 Comp	0		20JAN06*	◆ A&E Serv (S20, MMF, MCC not incl) Title 2 Comp					
MSBO_010	Magnetic Msmt Facility(MMF) Beneficial Occupancy	0		03APR06*	◆ Magnetic Msmt Facility(MMF) Beneficial Occupancy					
MS3_CF020	A&E Services MCC Title 1 Comp	0		19MAY06*	◆ A&E Services MCC Title 1 Comp					
MS3BO_005	Sector 20 Alcove Beneficial Occupancy	0		21JUN06*	◆ Sector 20 Alcove Beneficial Occupancy					
MS2BO_005	Sector 20 Alcove Beneficial Occupancy	0		21JUL06*	◆ Sector 20 Alcove Beneficial Occupancy					
MS3BO_025	Research Yards Mods Beneficial Occupancy	0		21SEP06*	◆ Research Yards Mods Beneficial Occupancy					
MS3_CF025	A&E Services MCC Title 2 Comp	0		27SEP06*	◆ A&E Services MCC Title 2 Comp					
MS2BO_025	Research Yards Mods Beneficial Occupancy	0		20OCT06*	◆ Research Yards Mods Beneficial Occupancy					
MS3BO_035	Undulator Facility Beneficial Occupancy	0		03MAY07*	◆ Undulator Facility Beneficial Occupancy					
MSBO_015	Main Control Center (MCC) Beneficial Occupancy	0		16MAY07*	◆ Main Control Center (MCC) Beneficial Occupancy					
MS3BO_050	Near Experimental Hall Beneficial Occupancy	0		18MAY07*	◆ Near Experimental Hall Beneficial Occupancy					
MS3BO_020	Linac Facility Beneficial Occupancy	0		11JUN07*	◆ Linac Facility Beneficial Occupancy					
MS2BO_050	Near Experimental Hall Beneficial Occupancy	0		18JUN07*	◆ Near Experimental Hall Beneficial Occupancy					
MS2BO_035	Undulator Facility Beneficial Occupancy	0		02JUL07*	◆ Undulator Facility Beneficial Occupancy					
MS2BO_020	Linac Facility Beneficial Occupancy	0		11JUL07*	◆ Linac Facility Beneficial Occupancy					
MS3BO_060	Far Experimental Hall Beneficial Occupancy	0		03AUG07*	◆ Far Experimental Hall Beneficial Occupancy					
MS2BO_060	Far Experimental Hall Beneficial Occupancy	0		04SEP07*	◆ Far Experimental Hall Beneficial Occupancy					
MS3BO_040	Front End Enclosure Beneficial Occupancy	0		05SEP07*	◆ Front End Enclosure Beneficial Occupancy					
MS3BO_055	X-Ray Transport Beneficial Occupancy	0		13SEP07*	◆ X-Ray Transport Beneficial Occupancy					
MS2BO_040	Front End Enclosure Beneficial Occupancy	0		05OCT07*	◆ Front End Enclosure Beneficial Occupancy					
MSBO_045	Beam Dump Beneficial Occupancy	0		09OCT07*	◆ Beam Dump Beneficial Occupancy					
MS2BO_055	X-Ray Transport Beneficial Occupancy	0		12OCT07*	◆ X-Ray Transport Beneficial Occupancy					
MS3BO_030	Beam Transport Hall Beneficial Occupancy	0		03DEC07*	◆ Beam Transport Hall Beneficial Occupancy					
MS2BO_030	Beam Transport Hall Beneficial Occupancy	0		03JAN08*	◆ Beam Transport Hall Beneficial Occupancy					
MS3BO_065	Central Lab Office Ctr Beneficial Occupancy	0		10OCT08*	◆ Central Lab Office Ctr Beneficial Occupancy					
MS2BO_065	Central Lab Office Ctr Beneficial Occupancy	0		10NOV08*	◆ Central Lab Office Ctr Beneficial Occupancy					

Start Date 01JUN01
 Finish Date 31MAR09
 Data Date 01OCT04
 Run Date 29APR05 13:55

**LCLS
 INTEGRATED SCHEDULE**

Conventional Facilities

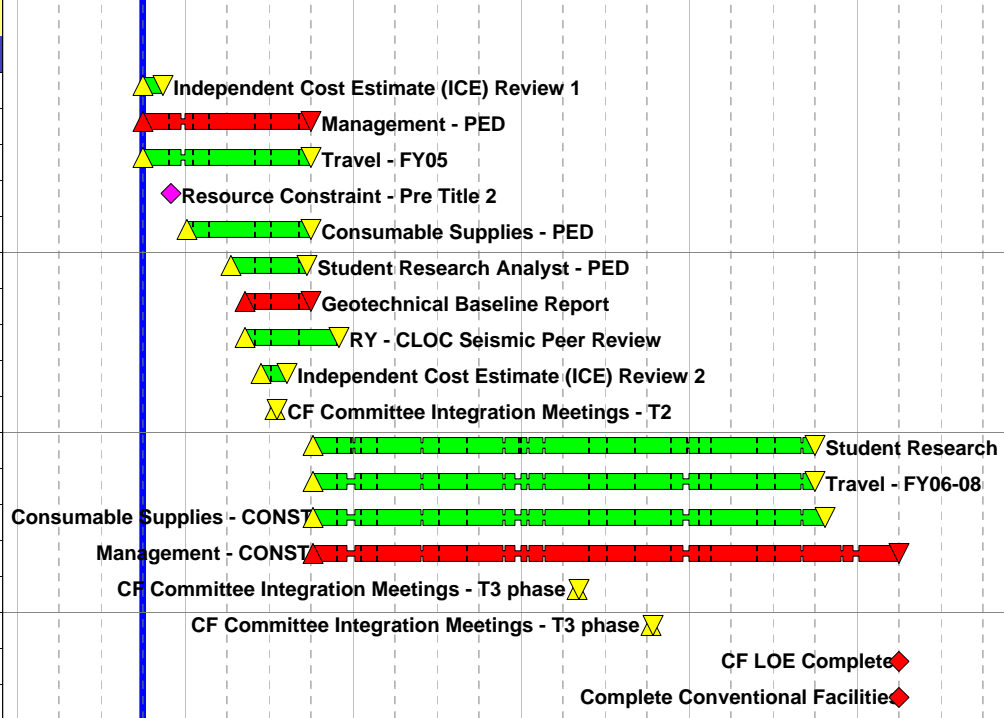


Activity ID	Activity Description	Orig Dur	Early Start	Early Finish	2004	2005	2006	2007	2008	2009
-------------	----------------------	----------	-------------	--------------	------	------	------	------	------	------

1.09.01 System Management & Integration

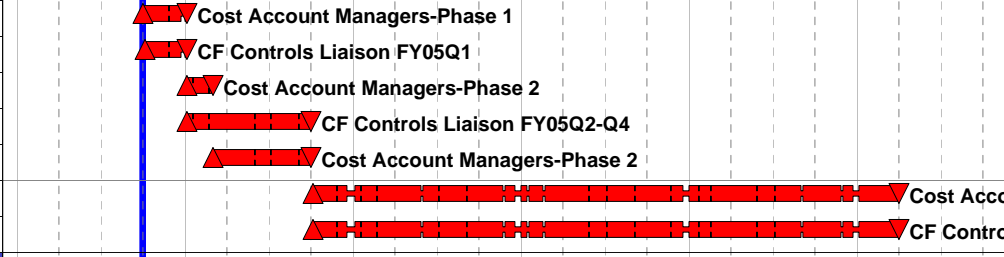
1.09.01.01 Management

CF13013200	Independent Cost Estimate (ICE) Review 1	30	01OCT04	11NOV04
CFMGT_1010	Management - PED	244	01OCT04	30SEP05
CFMGT_1123	Travel - FY05	244	01OCT04	30SEP05
CFMS_2010	Resource Constraint - Pre Title 2	0		01DEC04*
CFMGT_1090	Consumable Supplies - PED	190	03JAN05	30SEP05
CFMGT_1110	Student Research Analyst - PED	117	11APR05*	23SEP05
CFMGT_1180	Geotechnical Baseline Report	102	09MAY05*	30SEP05
CF13013100	RY - CLOC Seismic Peer Review	143	09MAY05*	30NOV05
CF13013210	Independent Cost Estimate (ICE) Review 2	40	13JUN05*	08AUG05
CFMGT_1135	CF Committee Integration Meetings - T2	5	13JUL05	19JUL05
CFMGT_1120	Student Research Analyst - CONST	753	03OCT05*	30SEP08
CFMGT_1125	Travel - FY06-08	727	03OCT05	30SEP08
CFMGT_1100	Consumable Supplies - CONST	742	03OCT05	21OCT08
CFMGT_1020	Management - CONST	846	03OCT05	31MAR09
CFMGT_1140	CF Committee Integration Meetings - T3 phase 1	5	01MAY07	07MAY07
CFMGT_1150	CF Committee Integration Meetings - T3 phase 2	5	08OCT07*	12OCT07
CFMGT_LOE	CF LOE Complete	0		31MAR09
CFMGT_1170	Complete Conventional Facilities	0	01APR09	



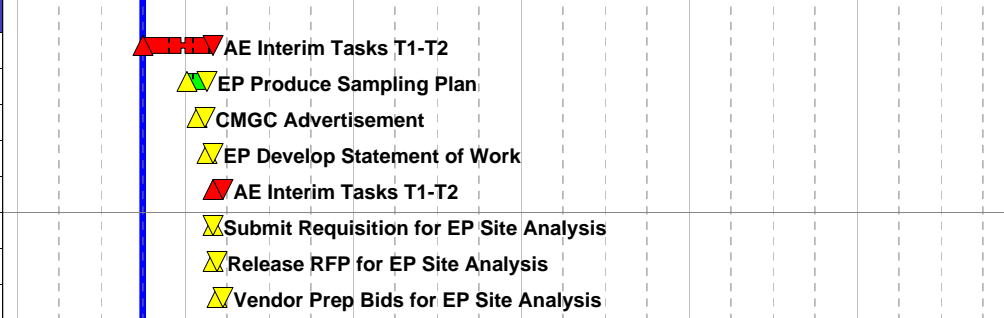
1.09.01.02 Cost Account Managers

CFMGT_1030	Cost Account Managers-Phase 1	55	01OCT04	03JAN05
CFMGT_1070	CF Controls Liaison FY05Q1	54	04OCT04	03JAN05
CFMGT_1035	Cost Account Managers-Phase 2	38	04JAN05	28FEB05
CFMGT_1075	CF Controls Liaison FY05Q2-Q4	189	04JAN05	30SEP05
CFMGT_1040	Cost Account Managers-Phase 2	151	01MAR05	30SEP05
CFMGT_1050	Cost Account Managers-Phase 3	846	03OCT05	31MAR09
CFMGT_1060	CF Controls Liaison FY06Q1 - FY08Q4	846	03OCT05	31MAR09



1.09.01.03 Construction Management & AE Support

CFMGT_1082	AE Interim Tasks T1-T2	93	01OCT04	28FEB05
CFMGT_2000	EP Produce Sampling Plan	30	03JAN05*	14FEB05
CFMGT_2050	CMGC Advertisement	11	27JAN05*	10FEB05
CFMGT_2005	EP Develop Statement of Work	10	15FEB05	01MAR05
CFMGT_1083	AE Interim Tasks T1-T2	15	01MAR05	21MAR05
CFMGT_2010	Submit Requisition for EP Site Analysis	1	02MAR05	02MAR05
CFMGT_2015	Release RFP for EP Site Analysis	5	03MAR05	09MAR05
CFMGT_2020	Vendor Prep Bids for EP Site Analysis	10	10MAR05	23MAR05



Start Date	01JUN01
Finish Date	31MAR09
Data Date	01OCT04
Run Date	29APR05 13:55

**LCLS
INTEGRATED SCHEDULE**

Conventional Facilities

Sheet 2 of 18

Activity ID	Activity Description	Orig Dur	Early Start	Early Finish							
					2004	2005	2006	2007	2008	2009	
CFMGT_1086	A&E Title 2 Support for RSY-CLOC(reimbursables)	173	28MAR05*	30NOV05			A&E Title 2 Support for RSY-CLOC(reimbursables)				
CFMGT_2055	LEED A&E Soft Costs	143	09MAY05*	30NOV05			LEED A&E Soft Costs				
CFMGT_2070	Perform Electrical Design - Consultant	137	17MAY05	30NOV05			Perform Electrical Design - Consultant				
CFMGT_2052	CMGC Advertisement - Additional Ads	5	23MAY05*	27MAY05			CMGC Advertisement - Additional Ads				
CFMMF_3075	AE Engineering Support for Construction-MMF	163	31MAY05	03FEB06			AE Engineering Support for Construction-MMF				
CFS20_3070	AE Support for Construction - Alcove/RF Hut	205	01JUN05	20APR06			AE Support for Construction - Alcove/RF Hut				
CFMGT_1067	CMGC Interim Task - FY05	83	06JUN05	30SEP05			CMGC Interim Task - FY05				
CFMGT_2025	Review Bids for EP Site Analysis	5	13JUN05*	17JUN05			Review Bids for EP Site Analysis				
CFMGT_2035	EP Site Analysis/Site Characterization	25	21JUN05	26JUL05			EP Site Analysis/Site Characterization				
CFMGT_2040	EP Excavated Material Disposition Plan	20	28JUN05	26JUL05			EP Excavated Material Disposition Plan				
CFMGT_1077	Construction Management -FY05	20	02SEP05	30SEP05			Construction Management -FY05				
CFMGT_1080	Construction Management FY06-08	727	03OCT05	30SEP08			Construction Mana				
CFMGT_1085	Construction Management (incentive allowance)	727	03OCT05	30SEP08			Construction Mana				
CFMGT_1087	A&E Title 3 Support for RSY-CLOC	686	01DEC05	30SEP08	A&E Title 3 Support for RSY-CLOC						
CFMGT_1088	A&E Title 3 Support for RSY-CLOC (reimbursables)	686	01DEC05	30SEP08			A&E Title 3 Support				
1.09.01.04 Mechanical Design (MD)											
CF04010230	Mechanical Design Support For Title 2 Design	231	03JAN05*	30NOV05			Mechanical Design Support For Title 2 Design				
CF06010230	Mechanical Design Support for Title 2 Design	231	03JAN05*	30NOV05			Mechanical Design Support for Title 2 Design				
CF07010230	Mechanical Design Support For Title 2 Design	231	03JAN05*	30NOV05			Mechanical Design Support For Title 2 Design				
CF08010230	Mechanical Design Support For Title 2 Design	231	03JAN05*	30NOV05			Mechanical Design Support For Title 2 Design				
CF09010230	Mechanical Design Support For Title 2 Design	231	03JAN05*	30NOV05			Mechanical Design Support For Title 2 Design				
CF11010230	Mechanical Design Support For Title 2 Design	231	03JAN05*	30NOV05			Mechanical Design Support For Title 2 Design				
CFRYB_2200	Mechanical Design Support For Title 2 Design	231	03JAN05*	30NOV05			Mechanical Design Support For Title 2 Design				
CF13010230	Mechanical Design Support For Title 2 Design	231	06JAN05*	05DEC05			Mechanical Design Support For Title 2 Design				
CFLNF_0070	Mechan Design Support Pre-Title 1 Linac Facility	24	18APR05*	19MAY05			Mechan Design Support Pre-Title 1 Linac Facility				
CFLNF_1010	Mechanical Design Support Title 1 Linac Facility	60	20JUL05*	12OCT05			Mechanical Design Support Title 1 Linac Facility				
CF10010230	Mechanical Design Support For Title 2 Design	117	09AUG05	08FEB06			Mechanical Design Support For Title 2 Design				
CFLNF_2160	T2 Design Pkg. Option to Proceed (Linac)	1	06FEB06	06FEB06			T2 Design Pkg. Option to Proceed (Linac)				
CFLNF_2150	Mechanical Design Support Title 2 Linac Facility	87	07FEB06	09JUN06			Mechanical Design Support Title 2 Linac Facility				
CFMCC_2030	Mechanical Design Support For Title 2 Design	64	27APR06	27JUL06			Mechanical Design Support For Title 2 Design				
CFLNF_3030	Mechanical Design Support for Construction	130	21SEP06	11APR07			Mechanical Design Support for Construction				
CF13013085	Mechanical Design Title 3 (Linac not Included)	360	14NOV06	16MAY08	Mechanical Design Title 3 (Linac not Included)						
1.09.01.05 Conventional Experiment Facility (CEF)											
CFMMF_2210	Write Purchase Requisition - MMF	1	01OCT04	01OCT04			Write Purchase Requisition - MMF				
CFMMF_2220	Budget Approval Process - MMF	5	04OCT04	08OCT04			Budget Approval Process - MMF				
CFRYC_2510	Develop CM SOW Draft	20	04OCT04	29OCT04			Develop CM SOW Draft				
CFRYC_2520	CM SOW Draft Complete	0		29OCT04			CM SOW Draft Complete				



LCLS
INTEGRATED SCHEDULE
Conventional Facilities

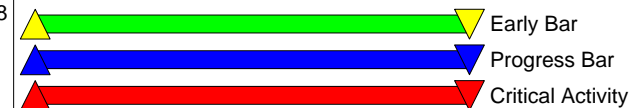
Start Date 01JUN01
 Finish Date 31MAR09
 Data Date 01OCT04
 Run Date 29APR05 13:55

Activity ID	Activity Description	Orig Dur	Early Start	Early Finish							
					2004	2005	2006	2007	2008	2009	
CFRYC_2530	Charter CM Review Committee	5	01NOV04	05NOV04		Charter CM Review Committee					
CFRYC_2540	Review SOW with SME	10	01NOV04	12NOV04		Review SOW with SME					
CFRYC_2550	Incorporate Comments	5	15NOV04	19NOV04		Incorporate Comments					
CFRYC_2560	CM SOW Final Complete	0		19NOV04		CM SOW Final Complete					
CFRYC_2570	Obtain SLAC Approval (Legal, Project, Proc)	10	22NOV04	07DEC04		Obtain SLAC Approval (Legal, Project, Proc)					
CFRYC_2580	Obtain DOE Approval	145	22NOV04	01JUL05		Obtain DOE Approval					
CF04010210	Telecom Requirements Beam Transport Hall	15	02DEC04	05JAN05		Telecom Requirements Beam Transport Hall					
CF04010215	User Review and Approval Beam Transport Hall	15	02DEC04	05JAN05		User Review and Approval Beam Transport Hall					
CF06010210	Telecom Requirements Undulator Facility	15	02DEC04	05JAN05		Telecom Requirements Undulator Facility					
CF06010215	User Review and Approval Undulator Facility	15	02DEC04	05JAN05		User Review and Approval Undulator Facility					
CF07010210	Telecom Requirements Front End Enclosure	15	02DEC04	05JAN05		Telecom Requirements Front End Enclosure					
CF07010215	User Review and Approval Front End Enclosure	15	02DEC04	05JAN05		User Review and Approval Front End Enclosure					
CF08010210	Telecom Requirements Beam Dump	15	02DEC04	05JAN05		Telecom Requirements Beam Dump					
CF08010215	User Review and Approval Beam Dump	15	02DEC04	05JAN05		User Review and Approval Beam Dump					
CF09010210	Telecom Requirements (NEH)	15	02DEC04	05JAN05		Telecom Requirements (NEH)					
CF09010215	User Review and Approval (NEH)	15	02DEC04	05JAN05		User Review and Approval (NEH)					
CF11010210	Telecom Requirements (FEH)	15	02DEC04	05JAN05		Telecom Requirements (FEH)					
CF11010215	User Review and Approval (FEH)	15	02DEC04	05JAN05		User Review and Approval (FEH)					
CF13010210	Telecom Requirements Beam Central Lab Office Ctr	15	02DEC04	05JAN05		Telecom Requirements Beam Central Lab Office Ctr					
CF13010215	User Review and Approval Central Lab Office Ctr	15	02DEC04	05JAN05		User Review and Approval Central Lab Office Ctr					
CFRYB_1510	Telecom Requirements Research Yard Mods	15	02DEC04	05JAN05		Telecom Requirements Research Yard Mods					
CFRYB_1520	User Review and Approval Research Yard Mods	15	02DEC04	05JAN05		User Review and Approval Research Yard Mods					
CFRYC_2590	Obtain Authorizatin from BSD to Advertise	3	03DEC04	07DEC04		Obtain Authorizatin from BSD to Advertise					
CFMGT_1045	HVAC Specialist	84	01FEB05*	31MAY05		HVAC Specialist					
CFS20_2210	Write Purchase Requisition - Alcove/RF Hut	1	10FEB05*	10FEB05		Write Purchase Requisition - Alcove/RF Hut					
CFS20_2220	Budget Approval Process - Alcove/RF Hut	3	11FEB05	15FEB05		Budget Approval Process - Alcove/RF Hut					
CFRYC_2610	Solicitation of Interest Due	5	11FEB05	17FEB05		Solicitation of Interest Due					
CFS20_2230	Assign Req to Contract Officer - Alcove/RF Hut	1	16FEB05	16FEB05		Assign Req to Contract Officer - Alcove/RF Hut					
CFS20_2240	Prep of Bid Docs by Contract Officer - Alcove/RF	22	17FEB05	21MAR05		Prep of Bid Docs by Contract Officer - Alcove/RF					
CFRYC_2620	Finalize First Short List	4	18FEB05	24FEB05		Finalize First Short List					
CFS20_2500	Prep Title 3 Bid Pkg - S20 SS/MCC (LLP)	5	23FEB05*	01MAR05		Prep Title 3 Bid Pkg - S20 SS/MCC (LLP)					
CFS20_2200	Prepare Title 3 Bid Pkg - Alcove/RF Hut	10	23FEB05*	08MAR05		Prepare Title 3 Bid Pkg - Alcove/RF Hut					
CFRYC_2640	Committee Select Final Short List	2	25FEB05	28FEB05		Committee Select Final Short List					
CFS20_2510	Write Purchase Requisition- S20 SS/MCC (LLP)	1	02MAR05	02MAR05		Write Purchase Requisition- S20 SS/MCC (LLP)					
CFRYC_2650	Obtain Proc Officer Approval of CM Bid List	21	02MAR05	30MAR05		Obtain Proc Officer Approval of CM Bid List					
CFRYC_2660	DOE Approval of Bid Pkg for CM Services	21	02MAR05	30MAR05		DOE Approval of Bid Pkg for CM Services					
CFS20_2520	Budget Approval Process - S20 SS/MCC (LLP)	5	03MAR05	09MAR05		Budget Approval Process - S20 SS/MCC (LLP)					

Start Date 01JUN01
Finish Date 31MAR09
Data Date 01OCT04
Run Date 29APR05 13:55

**LCLS
INTEGRATED SCHEDULE**

Conventional Facilities

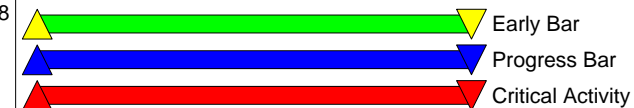


Activity ID	Activity Description	Orig Dur	Early Start	Early Finish							
					2004	2005	2006	2007	2008	2009	
CFS20_5030	Reproduction	5	09MAR05	15MAR05		⚠Reproduction					
CFS20_2530	Assign Req to Contract Admn - S20 SS/MCC (LLP)	1	10MAR05	10MAR05		⚠Assign Req to Contract Admn - S20 SS/MCC (LLP)					
CFS20_2540	Preparation of Bid Documents - S20 SS/MCC (LLP)	4	11MAR05	16MAR05		⚠Preparation of Bid Documents - S20 SS/MCC (LLP)					
CFS20_2550	Release RFP - S20 SS/MCC (LLP)	1	17MAR05	17MAR05		⚠Release RFP - S20 SS/MCC (LLP)					
CFS20_2560	Bid Process - S20 SS/MCC (LLP)	10	18MAR05	31MAR05		⚠Bid Process - S20 SS/MCC (LLP)					
CFS20_2250	Release RFP - Alcove/RF Hut	1	22MAR05	22MAR05		⚠Release RFP - Alcove/RF Hut					
CFS20_2260	Bid Process - Alcove/RF Hut	14	28MAR05*	14APR05		⚠Bid Process - Alcove/RF Hut					
CFS20_2570	Receive RFPs - S20 SS/MCC (LLP)	0		31MAR05		◆Receive RFPs - S20 SS/MCC (LLP)					
CFMMF_2200	Prepare Title 3 Bid Pkg - MMF (GC)	4	01APR05*	06APR05		⚠Prepare Title 3 Bid Pkg - MMF (GC)					
CFS20_2580	Review of Bids - S20 SS/MCC (LLP)	20	01APR05	28APR05		⚠Review of Bids - S20 SS/MCC (LLP)					
CFMMF_2250	Release RFP - MMF (GC)	1	07APR05	07APR05		⚠Release RFP - MMF (GC)					
CFMMF_5030	Reproduction	8	07APR05	18APR05		⚠Reproduction					
CFMMF_2260	Bid Process - MMF (GC)	19	08APR05	04MAY05		⚠Bid Process - MMF (GC)					
CFS20_2270	Receive RFPs - Alcove/RF Hut	0		14APR05		◆Receive RFPs - Alcove/RF Hut					
CFS20_2280	Review of Bids - Alcove/RF Hut	3	15APR05	19APR05		⚠Review of Bids - Alcove/RF Hut					
CFMMF_2270	Receive Bids - MMF (GC)	0		05MAY05		◆Receive Bids - MMF (GC)					
CFMMF_2280	Review of Bids - MMF (GC)	15	06MAY05	26MAY05		⚠Review of Bids - MMF (GC)					
CFMMF_2500	Prep Title 3 Bid Pkg - MMF Mjr Elect Equip (LLP)	5	11MAY05	17MAY05		⚠Prep Title 3 Bid Pkg - MMF Mjr Elect Equip (LLP)					
CFMMF_2550	Release RFP - MMF Mjr Elect Equip (LLP)	1	18MAY05	18MAY05		⚠Release RFP - MMF Mjr Elect Equip (LLP)					
CFMMF_2560	Bid Process - MMF Mjr Elect Equip (LLP)	10	19MAY05	02JUN05		⚠Bid Process - MMF Mjr Elect Equip (LLP)					
CFLNF_0010	Develop as-built package Linac Facility	10	20MAY05	03JUN05		⚠Develop as-built package Linac Facility					
CFLNF_0020	Utility investigation Linac Facility	10	20MAY05	03JUN05		⚠Utility investigation Linac Facility					
CFMMF_2570	Receive RFPs - MMF Mjr Elect Equip (LLP)	0		02JUN05		◆Receive RFPs - MMF Mjr Elect Equip (LLP)					
CFMMF_2580	Review of Bids - MMF Mjr Elect Equip (LLP)	2	03JUN05	06JUN05		⚠Review of Bids - MMF Mjr Elect Equip (LLP)					
CFLNF_0030	Review Schedule Linac Facility	5	06JUN05	10JUN05		⚠Review Schedule Linac Facility					
CFLNF_0040	Review Budget/Constructibility Linac Facility	5	06JUN05	10JUN05		⚠Review Budget/Constructibility Linac Facility					
CFLNF_0050	User meeting Linac Facility	5	13JUN05	17JUN05		⚠User meeting Linac Facility					
CF10010205	User mtg. - interior layout details Tunnel	15	17JUN05	08JUL05		⚠User mtg. - interior layout details Tunnel					
CFLNF_1020	Basis of Design Linac Facility	15	27JUN05	18JUL05		⚠Basis of Design Linac Facility					
CFRYC_2600	SLAC/DOE Approvals Complete	0		01JUL05		◆SLAC/DOE Approvals Complete					
CFRYC_2670	DOE Final Approval	0		01JUL05		◆DOE Final Approval					
CFRYC_2680	CM Request for Quotation (RFQ)	21	06JUL05*	03AUG05		⚠CM Request for Quotation (RFQ)					
CFLNF_1030	Prelim Meet SLAC Radiation Physics Dept T1	0	11JUL05			◆Prelim Meet SLAC Radiation Physics Dept T1					
CF10010210	Telecom Requirements Tunnel	15	11JUL05	29JUL05		⚠Telecom Requirements Tunnel					
CF10010215	User Review and Approval Tunnel	5	01AUG05	05AUG05		⚠User Review and Approval Tunnel					
CFLNF_1070	AVAIL: Prelim Cost Estimate for Design CF Linac	1	02AUG05	02AUG05		⚠AVAIL: Prelim Cost Estimate for Design CF Linac					
CFRYC_2690	CM Bids Received	0		03AUG05		◆CM Bids Received					

Start Date	01JUN01
Finish Date	31MAR09
Data Date	01OCT04
Run Date	29APR05 13:55

**LCLS
INTEGRATED SCHEDULE**

Conventional Facilities

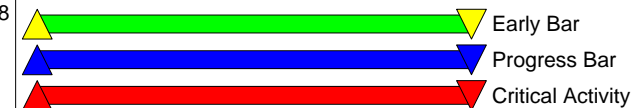


Activity ID	Activity Description	Orig Dur	Early Start	Early Finish							
					2004	2005	2006	2007	2008	2009	
MSC_CF020	CRIT: Release RFP Construction Mgmt Pkg (CM)	0		03AUG05							◆ CRIT: Release RFP Construction Mgmt Pkg (CM)
CFRYC_2630	Onsite Presentations	3	04AUG05	08AUG05							⚠ Onsite Presentations
CFRYC_2700	Review of Bids	15	04AUG05	24AUG05							⚠ Review of Bids
CFLNF_1080	Schematic Design Review 1 Linac T1	5	10AUG05	16AUG05							⚠ Schematic Design Review 1 Linac T1
CFRYC_2745	CM Kickoff Meeting	2	09SEP05	12SEP05							⚠ CM Kickoff Meeting
CFLNF_1090	Schematic Design Review 2 Linac T1	5	13SEP05	19SEP05							⚠ Schematic Design Review 2 Linac T1
CFRYC_2750	Develop GC List	20	13SEP05	10OCT05							⚠ Develop GC List
CFMCC_0040	MCC Prepare as Builts	10	30SEP05	13OCT05							⚠ MCC Prepare as Builts
CFMCC_0010	Start MCC Conventional Project	0	03OCT05								◆ Start MCC Conventional Project
CFMCC_0020	MCC Field Survey	9	03OCT05	13OCT05							⚠ MCC Field Survey
CFRYC_2760	Pre Qualify GC	10	11OCT05	24OCT05							⚠ Pre Qualify GC
CFMCC_0030	MCC Initial Receipt User Reqs.	5	14OCT05	20OCT05							⚠ MCC Initial Receipt User Reqs.
CFMCC_0050	MCC Develop Design Criteria	10	21OCT05	03NOV05							⚠ MCC Develop Design Criteria
CFRYC_2770	GC List Approval (Legal, Project, Proc)	10	25OCT05	07NOV05							⚠ GC List Approval (Legal, Project, Proc)
CFLNF_1100	Final Schematic Design Review Linac T1	10	01NOV05	14NOV05							⚠ Final Schematic Design Review Linac T1
CFMCC_0060	MCC User Review & Approval	5	04NOV05	10NOV05							⚠ MCC User Review & Approval
CFRYC_2780	Prepare Title 3 Bid Pkg - GC	20	08NOV05	07DEC05							⚠ Prepare Title 3 Bid Pkg - GC
CFMCC_0070	MCC Design Criteria Complete	0		10NOV05							◆ MCC Design Criteria Complete
CFMCC_0080	MCC Prepare AE RFP Package	5	11NOV05	17NOV05							⚠ MCC Prepare AE RFP Package
CFLNF_1110	Title 1 Complete Linac Facility	0	15NOV05	14NOV05							⚠ Title 1 Complete Linac Facility
CFLNF_1120	Value Engineering Linac Facility	10	15NOV05	30NOV05							⚠ Value Engineering Linac Facility
CFMCC_0090	MCC Submit RFP	5	18NOV05	28NOV05							⚠ MCC Submit RFP
CFMCC_0100	MCC AE Jobwalk	1	29NOV05	29NOV05							⚠ MCC AE Jobwalk
CFMCC_0110	MCC AE Bids Due	0		29NOV05							◆ MCC AE Bids Due
CFLNF_1130	COMP: Value Engineering Linac Facility	0		30NOV05							◆ COMP: Value Engineering Linac Facility
CFMCC_0120	MCC AE Selection	5	30NOV05	06DEC05							⚠ MCC AE Selection
CFLNF_1510	User mtg.-interior layout details Linac Facility	20	01DEC05	12JAN06							⚠ User mtg.-interior layout details Linac Facility
CFMCC_0130	MCC Notice to Proceed	4	07DEC05	12DEC05							⚠ MCC Notice to Proceed
CFRYC_2790	Release RFP - GC	2	08DEC05	09DEC05							⚠ Release RFP - GC
CFRYC_2800	ESH approval Research Yard - CLOC	5	08DEC05	14DEC05							⚠ ESH approval Research Yard - CLOC
CFMCC_0140	MCC Title 1 Commence	0		12DEC05							◆ MCC Title 1 Commence
CFRYC_2810	Bid Process - GC	20	15DEC05	27JAN06							⚠ Bid Process - GC
CFLNF_1520	User Review and Approval Linac Facility	15	13JAN06	03FEB06							⚠ User Review and Approval Linac Facility
CFRYC_2820	Receive RFPs - GC	0		27JAN06							◆ Receive RFPs - GC
CFRYC_2830	Review of Bids - GC	10	30JAN06	10FEB06							⚠ Review of Bids - GC
CFLNF_2170	REQD:Obtain Seismic Rev Committe Appr Linac (T2)	0	07FEB06								◆ REQD:Obtain Seismic Rev Committe Appr Linac (T2)
CFLNF_2010	Multi-Discipline Developmt Phase Linac Facility	40	07FEB06	04APR06							⚠ Multi-Discipline Developmt Phase Linac Facility

Start Date 01JUN01
Finish Date 31MAR09
Data Date 01OCT04
Run Date 29APR05 13:55

**LCLS
INTEGRATED SCHEDULE**

Conventional Facilities



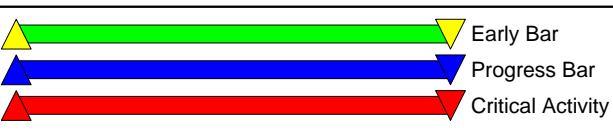
Activity ID	Activity Description	Orig Dur	Early Start	Early Finish							
					2004	2005	2006	2007	2008	2009	
CFRYC_2850	Review with SLAC for Approval	10	27FEB06	10MAR06			Review with SLAC for Approval				
CFMCC_1510	MCC User mtg. - interior layout details	15	28MAR06	17APR06			MCC User mtg. - interior layout details				
CFLNF_2020	User Review and Approval Linac Facility	10	05APR06	18APR06			User Review and Approval Linac Facility				
CFMCC_1520	MCC Telecom Requirements	5	18APR06	24APR06			MCC Telecom Requirements				
CFLNF_2030	Consultant Modify drwgs as necessary Linac Facil	10	19APR06	02MAY06			Consultant Modify drwgs as necessary Linac Facil				
CFMCC_1530	MCC User Review and Approval	1	25APR06	25APR06			MCC User Review and Approval				
CFLNF_2040	Consultants provide 50% dwgs Linac Facility	1	03MAY06	03MAY06			Consultants provide 50% dwgs Linac Facility				
CFLNF_2050	Design team coordination meeting Linac Facility	2	04MAY06	05MAY06			Design team coordination meeting Linac Facility				
CFLNF_2060	Consultnt issue update base plans Linac Facility	5	08MAY06	12MAY06			Consultnt issue update base plans Linac Facility				
CFLNF_2080	Construction Schedule Review - Linac Fac	0		12MAY06			Construction Schedule Review - Linac Fac				
CFLNF_2180	Design Review 1 Linac Facility (T2)	0		12MAY06			Design Review 1 Linac Facility (T2)				
CFLNF_2070	User Review Linac Facility	5	15MAY06	19MAY06			User Review Linac Facility				
CFLNF_2090	Details & Specifications Linac Facility	10	22MAY06	05JUN06			Details & Specifications Linac Facility				
CFLNF_2190	Design Review 2 Linac Facility (T2)	0		05JUN06			Design Review 2 Linac Facility (T2)				
CFLNF_2100	100% Drawings& Specs f/Consultants Linac Facilit	14	06JUN06	23JUN06			100% Drawings& Specs f/Consultants Linac Facilit				
CFLNF_2200	Final Design Review Linac Facility (T2)	1	26JUN06	26JUN06			Final Design Review Linac Facility (T2)				
CFLNF_2210	Title 2 Complete Linac Facility	0		26JUN06			Title 2 Complete Linac Facility				
CFLNF_2110	Issue Drawings/Specs for cost est Linac Facility	5	26JUN06	30JUN06			Issue Drawings/Specs for cost est Linac Facility				
CFLNF_2120	Cost estimate Linac Facility	5	03JUL06	10JUL06			Cost estimate Linac Facility				
CFLNF_2130	100% Design Development Submittal Linac Facility	5	11JUL06	17JUL06			100% Design Development Submittal Linac Facility				
CFLNF_2140	SLAC Review Linac Facility	5	18JUL06	24JUL06			SLAC Review Linac Facility				
CFLNF_2510	User approval and sign off Linac Facility	20	25JUL06	21AUG06			User approval and sign off Linac Facility				
CFMCC_2500	MCC User Approval & Sign Off	5	28JUL06	03AUG06			MCC User Approval & Sign Off				
CFMCC_2520	ESH approval (MCC)	10	28JUL06	10AUG06			ESH approval (MCC)				
CFMCC_2510	MCC User Approval	0		03AUG06			MCC User Approval				
CFMCC_2530	Submit requisition for Construction (MCC)	1	11AUG06	11AUG06			Submit requisition for Construction (MCC)				
CFMCC_2540	Approval process for Signature (MCC)	5	14AUG06	18AUG06			Approval process for Signature (MCC)				
CFMCC_2550	Jobwalk (MCC)	0		18AUG06			Jobwalk (MCC)				
CFMCC_2560	RFQ (MCC)	10	21AUG06	01SEP06			RFQ (MCC)				
CFLNF_2520	ESH approval Linac Facility	10	22AUG06	05SEP06			ESH approval Linac Facility				
CFMCC_2570	Bids due (MCC)	0		01SEP06			Bids due (MCC)				
CFMCC_2580	MCC Notice to Proceed	5	05SEP06	11SEP06			MCC Notice to Proceed				
CFLNF_2530	Pework Hazard Analysis Linac Facility	10	06SEP06	19SEP06			Pework Hazard Analysis Linac Facility				
CFMCC_2590	Pework Hazard Analysis (MCC)	7	12SEP06	20SEP06			Pework Hazard Analysis (MCC)				
CFMCC_2600	Kick off (MCC)	0		20SEP06			Kick off (MCC)				

Start Date 01JUN01
Finish Date 31MAR09
Data Date 01OCT04
Run Date 29APR05 13:55

© Primavera Systems, Inc.

**LCLS
INTEGRATED SCHEDULE**

Conventional Facilities



Activity ID	Activity Description	Orig Dur	Early Start	Early Finish						
					2004	2005	2006	2007	2008	2009
1.09.02 Title 1 & Title 2 Conventional Facilities										
1.09.02.02 A & E Services (S20, MMF, MMC not Incl)										
CF10010300	Geotech Study Tunnel	74	01OCT04	31JAN05						
CF10010370	Geotech study complete Tunnel	0		31JAN05						
CF04012005	Title 2 Design Kickoff Mtg - RY - CLOC	2	29MAR05*	30MAR05						
CF10011005	Design Tunnel	54	01APR05*	16JUN05						
CF04012015	30% Title 2 Design Review - RY through CLOC	61	01APR05*	27JUN05						
CF04012020	LCLS Review 30% Title 2 Design	10	28JUN05	12JUL05						
CF04012025	60% Title 2 Design Review - RY through CLOC	45	28JUN05	30AUG05						
CFLNF_1040	Linac Code Analysis Title 1	10	11JUL05	22JUL05						
CFLNF_1050	Lin Preliminary Cost Range(w/contingency budget)	10	11JUL05	22JUL05						
CFLNF_1060	Linac Validation Meeting Title 1	0		22JUL05						
CF10012005	Consultant Review Geotech Study Tunnel	5	09AUG05	15AUG05						
CF10012010	Consultant Develop Tunnel Profile Tunnel	5	16AUG05	22AUG05						
CF10012015	Exterior Finish Selection Tunnel	5	23AUG05	29AUG05						
CF10012020	Multi-Discipline Development Phase Tunnel	40	30AUG05	25OCT05						
CF04012035	LCLS Review 60% Title 2 Design	10	31AUG05	14SEP05						
CF04012040	90% Title 2 Design Review - RY through CLOC	39	31AUG05	25OCT05						
CF04012050	LCLS Review 90% Title 2 Design	10	26OCT05	08NOV05						
CF10012025	User Review and Approval Tunnel	10	26OCT05	08NOV05						
CF04012055	100% Title 2 Design Review	25	26OCT05	01DEC05						
CF10012030	Consultant Modify drwgs as necessary Tunnel	10	09NOV05	22NOV05						
CF10012035	Consultants provide Drawings Tunnel	1	23NOV05	23NOV05						
CF10012040	Design team coordination meeting Tunnel	2	28NOV05	29NOV05						
CF10012045	Consultant issue update base plan Tunnel	4	30NOV05	05DEC05						
CF04012101	REQD:Obtain Seismic Rvw Committee Appr(T2)	0	01DEC05							
CF04012060	LCLS Review 100% Title 2 Design	10	02DEC05	15DEC05						
CF10012055	User Review Tunnel	5	06DEC05	12DEC05						
CF10012060	Details & Specification Tunnel	10	13DEC05	10JAN06						
CF04012065	Complete Title 2 Design RY through CLOC	0		15DEC05						
CF04012075	SLAC Committee 100% Title 2 Design Review	10	16DEC05	13JAN06						
CF04012085	DOE 100% Title 2 Design Review	20	09JAN06	06FEB06						
CF10012065	Drawings& Specs from Consultants Tunnel	14	11JAN06	31JAN06						
CF10012070	Issue Drawings/Specs for cost estimate Tunnel	5	01FEB06	07FEB06						
CF04012095	DOE Approval of 100% Title 2 Design (RY - CLOC)	0		06FEB06						
CF10012075	Cost estimate Tunnel	5	08FEB06	14FEB06						
CF10012080	Design Development Submittal Tunnel	5	15FEB06	22FEB06						

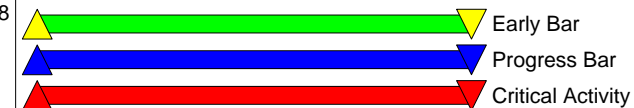
**LCLS
INTEGRATED SCHEDULE**

Conventional Facilities



Start Date 01JUN01
 Finish Date 31MAR09
 Data Date 01OCT04
 Run Date 29APR05 13:55

Activity ID	Activity Description	Orig Dur	Early Start	Early Finish						
					2004	2005	2006	2007	2008	2009
CF10012085	Structural Peer Review Tunnel	5	15FEB06	22FEB06			⚠ Structural Peer Review Tunnel			
CF10012090	Stanford/SLAC Review Tunnel	5	15FEB06	22FEB06			⚠ Stanford/SLAC Review Tunnel			
1.09.02.03 A & E Services - (S20, MMF, MCC)										
CFMCC_2110	MCC Design Review 2	1	01OCT04	01OCT04			⚠ MCC Design Review 2			
CFS20_2120	Review 50% Title 2 Design - Alcove/RF Hut (SLAC)	16	01OCT04	22OCT04			⚠ Review 50% Title 2 Design - Alcove/RF Hut (SLAC)			
CFMMF_2020	MMF Develop 50% Title 2 Design (A/E)	17	01OCT04	25OCT04			⚠ MMF Develop 50% Title 2 Design (A/E)			
CFS20_2100	S20 Title 2 Mechanical Design Support	64	01OCT04	14JAN05			⚠ S20 Title 2 Mechanical Design Support			
CFMCC_2120	MCC SLAC Meeting with AE Firm	5	04OCT04	08OCT04			⚠ MCC SLAC Meeting with AE Firm			
CFMCC_2130	MCC Design Development	15	11OCT04	29OCT04			⚠ MCC Design Development			
CFS20_2130	Develop 90% Title 2 Dsn - Alcove/RF Hut (A/E)	23	25OCT04	24NOV04			⚠ Develop 90% Title 2 Dsn - Alcove/RF Hut (A/E)			
CFMMF_2030	MMF Review 50% Title 2 Design (SLAC)	10	26OCT04	08NOV04			⚠ MMF Review 50% Title 2 Design (SLAC)			
CFMCC_2140	MCC Construction Docs Final Review Draft	1	01NOV04	01NOV04			⚠ MCC Construction Docs Final Review Draft			
CFMCC_2150	MCC Final Design Review	1	01NOV04	01NOV04			⚠ MCC Final Design Review			
CFMMF_2040	MMF Develop 90% Title 2 Design (A/E)	25	09NOV04	15DEC04			⚠ MMF Develop 90% Title 2 Design (A/E)			
CFS20_2140	Review 90% Title 2 Dsn - Alcove/RF Hut (SLAC)	10	29NOV04	10DEC04			⚠ Review 90% Title 2 Dsn - Alcove/RF Hut (SLAC)			
CFS20_2300	S20 Seismic Peer Review	10	29NOV04	10DEC04			⚠ S20 Seismic Peer Review			
CFS20_2150	Title 2 Seismic Committee Approval - Alcove/RF	5	13DEC04	17DEC04			⚠ Title 2 Seismic Committee Approval - Alcove/RF			
CFS20_2160	Title 2 Dsn ES&H Approval - Alcove/RF Hut	5	13DEC04	17DEC04			⚠ Title 2 Dsn ES&H Approval - Alcove/RF Hut			
CFMMF_2065	MMF Seismic Peer Review	10	16DEC04	03JAN05			⚠ MMF Seismic Peer Review			
CFMMF_2050	MMF Review 90% Title 2 Design (SLAC)	10	16DEC04	12JAN05			⚠ MMF Review 90% Title 2 Design (SLAC)			
CFS20_2170	Develop 100% T2 Dsn - Alcove/RF (A/E)	10	03JAN05	14JAN05			⚠ Develop 100% T2 Dsn - Alcove/RF (A/E)			
CFMMF_2070	MMF Title 2 Seismic Committee Approval	5	13JAN05	20JAN05			⚠ MMF Title 2 Seismic Committee Approval			
CFS20_2180	Submit 100% Title 2 Dsn - Alcove/RF Hut (A/E)	1	18JAN05	18JAN05			⚠ Submit 100% Title 2 Dsn - Alcove/RF Hut (A/E)			
CFS20_2190	Title 2 Design Complete - Alcove/RF Hut	1	19JAN05	19JAN05			⚠ Title 2 Design Complete - Alcove/RF Hut			
CFMMF_2080	MMF Incorp Comments 100% Title 2 Dsn (A/E)	10	21JAN05	03FEB05			⚠ MMF Incorp Comments 100% Title 2 Dsn (A/E)			
CFMMF_2090	MMF Submit 100% Title 2 Dsn Pkg (A/E)	1	04FEB05	04FEB05			⚠ MMF Submit 100% Title 2 Dsn Pkg (A/E)			
CFMMF_2060	MMF Title 2 Dsn ES&H Approval	5	07FEB05	11FEB05			⚠ MMF Title 2 Dsn ES&H Approval			
CFMMF_2095	MTH Engineering Design for MMF LLP	46	08MAR05*	10MAY05			⚠ MTH Engineering Design for MMF LLP			
CFMMF_2100	MMF Title 2 Design Complete	0		14MAR05*			◆ MMF Title 2 Design Complete			
CFS20_2195	MTH Engineering Services for Sector 20 LLP	56	14MAR05*	31MAY05			⚠ MTH Engineering Services for Sector 20 LLP			
CFMCC_1010	REQD:SPECS F/HOOKUPS	0		12DEC05			◆ REQD:SPECS F/HOOKUPS			
CFMCC_1030	MCC Preliminary Cost Range(w/contingency budget)	10	14DEC05	11JAN06			⚠ MCC Preliminary Cost Range(w/contingency budget)			
CFMCC_1040	MCC Code Analysis Title 1	10	16DEC05	13JAN06			⚠ MCC Code Analysis Title 1			
CFMCC_1070	MCC MEP Basis of Design	10	16DEC05	13JAN06			⚠ MCC MEP Basis of Design			
CFMCC_1080	MCC Structural Basis of Design	10	16DEC05	13JAN06			⚠ MCC Structural Basis of Design			
CFMCC_1060	MCC Architectural Layout	15	16DEC05	23JAN06			⚠ MCC Architectural Layout			
CFMCC_1050	MCC Validation Meeting Title 1	0		13JAN06			◆ MCC Validation Meeting Title 1			



LCLS
INTEGRATED SCHEDULE
Conventional Facilities

Start Date 01JUN01
 Finish Date 31MAR09
 Data Date 01OCT04
 Run Date 29APR05 13:55

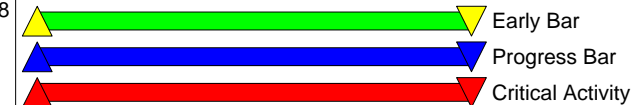
Activity ID	Activity Description	Orig Dur	Early Start	Early Finish						
					2004	2005	2006	2007	2008	2009
CFMCC_1090	MCC Schematic Design Review Title 1	1	17JAN06	17JAN06			⚠	MCC Schematic Design Review Title 1		
CFMCC_1100	MCC Design Development	15	18JAN06	07FEB06			⚠	MCC Design Development		
CFMCC_1110	MCC SLAC Review/Approval	5	08FEB06	14FEB06			⚠	MCC SLAC Review/Approval		
CFMCC_1120	MCC Preliminary Cost Estimates	1	15FEB06	15FEB06			⚠	MCC Preliminary Cost Estimates		
CFMCC_1130	MCC Progress Review	0		15FEB06			◆	MCC Progress Review		
CFMCC_1140	MCC SLAC Review/Approval	5	16FEB06	23FEB06			⚠	MCC SLAC Review/Approval		
CFMCC_1150	MCC Schematic Design Review 2	1	23FEB06	23FEB06			⚠	MCC Schematic Design Review 2		
CFMCC_1160	MCC Rad Safety Committee Review Comp T1	0		23FEB06			◆	MCC Rad Safety Committee Review Comp T1		
CFMCC_1170	MCC Design Development Title 1	14	24FEB06	15MAR06			⚠	MCC Design Development Title 1		
CFMCC_1180	MCC SLAC Review/Approval	3	16MAR06	20MAR06			⚠	MCC SLAC Review/Approval		
CFMCC_1190	MCC Final Schematic Design Complete	1	20MAR06	20MAR06			⚠	MCC Final Schematic Design Complete		
CFMCC_1200	MCC Design Title 1 Complete	1	20MAR06	20MAR06			⚠	MCC Design Title 1 Complete		
CFMCC_1210	Value Engineering MCC	5	21MAR06	27MAR06			⚠	Value Engineering MCC		
CFMCC_1220	COMP: Value Engineering Linac MCC	0		27MAR06			◆	COMP: Value Engineering Linac MCC		
CFMCC_2020	MCC Title 2 Commence	0		27APR06			◆	MCC Title 2 Commence		
CFMCC_2040	MCC SLAC Review/Approval	5	28APR06	04MAY06			⚠	MCC SLAC Review/Approval		
CFMCC_2050	MCC SLAC Meeting W/AE Firm	1	05MAY06	05MAY06			⚠	MCC SLAC Meeting W/AE Firm		
CFMCC_2060	MCC Design Development	15	08MAY06	26MAY06			⚠	MCC Design Development		
CFMCC_2070	MCC Design Review 1 w/Cost Est	1	26MAY06	26MAY06			⚠	MCC Design Review 1 w/Cost Est		
CFMCC_2080	MCC SLAC Meeting With AE Firm	5	30MAY06	05JUN06			⚠	MCC SLAC Meeting With AE Firm		
CFMCC_2100	MCC Design Development	15	06JUN06	26JUN06			⚠	MCC Design Development		
CFMCC_2160	MCC Title 2 Complete	1	27JUL06	27JUL06			⚠	MCC Title 2 Complete		

1.09.03 Construction-T3 Conventional Facilities

1.09.03.01 Sector 20 Injector Facilities

CFS20_3000	Remove Alcove Pump Room	40	03JAN05	01MAR05
CFS20_3005	Alcove Remove Unused Utilities	95	03JAN05	17MAY05
CFS20_3010	RF Hut Clear Area	60	20JAN05	14APR05
MSC_CF005	CRIT: Rel RFP T3 Const. Pkg. RF Hut & S20/Alcove	0		22MAR05
CFS20_3030	Contractor Prep Bonds, Docs - Alcove/RF Hut	10	20APR05	03MAY05
CFS20_3040	Kick off - Alcove/RF Hut	1	24MAY05*	24MAY05
CFS20_3050	AVAIL: Start - Alcove/RF Hut	0		31MAY05
CFS20_3100	Mobilization - Alcove/RF Hut	3	01JUN05*	03JUN05
CFS20_3003	Rebuild and Relocate Alcove Pump Room	86	01JUN05*	30SEP05
CFS20_3180	Demolition and Site Prep - Alcove/RF Hut	30	06JUN05	18JUL05
CFS20_3185	Build RF Hut Shell	45	19JUL05	20SEP05
CFS20_3200	Build Structure - S20 Alcove	55	19JUL05	04OCT05
CFS20_3016	Receive S20 SubStation/MtrCntlCntr	20	26AUG05	23SEP05

- ▲▼ Remove Alcove Pump Room
- ▲▼ Alcove Remove Unused Utilities
- ▲▼ RF Hut Clear Area
- ◆ CRIT: Rel RFP T3 Const. Pkg. RF Hut & S20/Alcove
- ▲▼ Contractor Prep Bonds, Docs - Alcove/RF Hut
- ⚠ Kick off - Alcove/RF Hut
- ◆ AVAIL: Start - Alcove/RF Hut
- ⚠ Mobilization - Alcove/RF Hut
- ▲▼ Rebuild and Relocate Alcove Pump Room
- ▲▼ Demolition and Site Prep - Alcove/RF Hut
- ▲▼ Build RF Hut Shell
- ▲▼ Build Structure - S20 Alcove
- ▲▼ Receive S20 SubStation/MtrCntlCntr



LCLS INTEGRATED SCHEDULE Conventional Facilities

Start Date 01JUN01
 Finish Date 31MAR09
 Data Date 01OCT04
 Run Date 29APR05 13:55

Activity ID	Activity Description	Orig Dur	Early Start	Early Finish							
					2004	2005	2006	2007	2008	2009	
CFS20_3190	COMP: RF Hut Shell Title 3	0		20SEP05			◆ COMP: RF Hut Shell Title 3				
CFS20_3195	AVAIL: RF Hut Shell Beneficial Occupancy	0		20SEP05			◆ AVAIL: RF Hut Shell Beneficial Occupancy				
CFMMF_2700	Drawing Implementation to SLAC System- MMF	60	03OCT05*	11JAN06			▲▲▲ Drawing Implementation to SLAC System- MMF				
CFS20_3210	Install Mechanical/Electrical	40	05OCT05	01DEC05			▲▲▲ Install Mechanical/Electrical				
CFS20_3220	Install Interiors	30	02DEC05	30JAN06			▲▲▲ Install Interiors				
CFS20_2800	Drawing Implementation to SLAC System- S20	60	17JAN06*	11APR06			▲▲▲ Drawing Implementation to SLAC System- S20				
CFS20_3230	Building Commissioning Alcove	40	24FEB06	20APR06			▲▲▲ Building Commissioning Alcove				
CFS20_3240	Alcove Punchlist	10	24MAR06	06APR06			▲▲▲ Alcove Punchlist				
CFS20_5020	Testing	5	14APR06	20APR06			▲▲▲ Testing				
CFS20_3250	COMP: Alcove Title 3	0		20APR06			◆ COMP: Alcove Title 3				
CFS20_3260	AVAIL: Alcove Beneficial Occupancy	0		20APR06			◆ AVAIL: Alcove Beneficial Occupancy				
CFS20_5010	Furnishings	50	21APR06	30JUN06			▲▲▲ Furnishings				
1.09.03.02 Magnetic Measurement Facility											
MSC_CF010	CRIT: Release RFP T3 Construction Contract (MMF)	0		07APR05			◆ CRIT: Release RFP T3 Construction Contract (MMF)				
SSCF_0400	CRIT: Magnetic Measurement Facility	0	08APR05				◆ CRIT: Magnetic Measurement Facility				
CFMMF_3005	MMF Relocate Stores - SLAC	40	09MAY05*	05JUL05			▲▲▲ MMF Relocate Stores - SLAC				
CFMMF_3100	Contractor Prep Bonds and Docs	9	31MAY05	10JUN05			▲▲▲ Contractor Prep Bonds and Docs				
CFMMF_3110	Kickoff Meeting	1	13JUN05	13JUN05			▲▲▲ Kickoff Meeting				
CFMMF_3140	Demolition and Site Prep	15	14JUN05	05JUL05			▲▲▲ Demolition and Site Prep				
CFMMF_3050	Install MMF Major Electrical Equip (LLP)	60	20JUN05	13SEP05			▲▲▲ Install MMF Major Electrical Equip (LLP)				
CFMMF_3060	MMF Modify Bldg Lighting & Power etc. (LLP)	60	20JUN05	13SEP05			▲▲▲ MMF Modify Bldg Lighting & Power etc. (LLP)				
CFMMF_3010	Start Constr Magnetic Measurement Facility	0		05JUL05			◆ Start Constr Magnetic Measurement Facility				
CFMMF_3150	Build Structure and Foundation	45	06JUL05	07SEP05			▲▲▲ Build Structure and Foundation				
CFMMF_3160	Install Interiors and Cranes	70	27JUL05	02NOV05			▲▲▲ Install Interiors and Cranes				
CFMMF_3170	Install Mechanical/Electrical	70	27JUL05	02NOV05			▲▲▲ Install Mechanical/Electrical				
CFMMF_3165	MMF Certify Cranes	2	03NOV05	04NOV05			▲▲▲ MMF Certify Cranes				
CFMMF_3175	Building Commissioning MMF	50	03NOV05	31JAN06			▲▲▲ Building Commissioning MMF				
CFMMF_3185	MMF Project Punch List	10	05DEC05	16DEC05			▲▲▲ MMF Project Punch List				
CFMMF_5020	Testing and Balancing	2	01FEB06	02FEB06			▲▲▲ Testing and Balancing				
CFMMF_3195	COMP: Magnetic Measure Facility Title 3	0		03FEB06			◆ COMP: Magnetic Measure Facility Title 3				
CFMMF_3200	AVAIL: Beneficial Occupancy MMF	0		03FEB06			◆ AVAIL: Beneficial Occupancy MMF				
CFMMF_5010	Furnishings	50	06FEB06	17APR06			▲▲▲ Furnishings				
1.09.03.03 Main Control Center Facilities Upgrade											
MSC_CF015	CRIT: Release RFP T3 Construction Package (MCC)	0		11AUG06			◆ CRIT: Release RFP T3 Construction Package (MCC)				
CFMCC_3010	REQD:Clear area for Construction	0	03OCT06				◆ REQD:Clear area for Construction				
CFMCC_3020	MCC Clear Area Unload Racks	10	03OCT06	16OCT06			▲▲▲ MCC Clear Area Unload Racks				
CFMCC_3040	MCC Clear Area Remove Storage Racks	5	17OCT06	23OCT06			▲▲▲ MCC Clear Area Remove Storage Racks				

Start Date 01JUN01
Finish Date 31MAR09
Data Date 01OCT04
Run Date 29APR05 13:55

**LCLS
INTEGRATED SCHEDULE**
Conventional Facilities



Activity ID	Activity Description	Orig Dur	Early Start	Early Finish						
					2004	2005	2006	2007	2008	2009
CFMCC_3060	AVAIL: MCC Clear Area	0		23OCT06				◆ AVAIL: MCC Clear Area		
CFMCC_3070	MCC Construction Commence	0		23OCT06				◆ MCC Construction Commence		
CFMCC_3080	MCC Utilities	10	24OCT06	06NOV06				▲ MCC Utilities		
CFMCC_3050	MCC Title 3 Construction	90	24OCT06	19MAR07				▲ MCC Title 3 Construction		
CFMCC_3090	MCC Structural	15	07NOV06	29NOV06				▲ MCC Structural		
CFMCC_3100	MCC Modify Bldg Lighting & Power etc.	15	30NOV06	04JAN07				▲ MCC Modify Bldg Lighting & Power etc.		
CFMCC_3110	MCC Modify HVAC	20	05JAN07	02FEB07				▲ MCC Modify HVAC		
CFMCC_3120	MCC Special System (Fire Protection)	10	05FEB07	16FEB07				▲ MCC Special System (Fire Protection)		
CFMCC_3130	MCC Install Interiors	20	20FEB07	19MAR07				▲ MCC Install Interiors		
CFMCC_3115	Building Commissioning (MCC)	10	27FEB07	12MAR07				▲ Building Commissioning (MCC)		
CFMCC_3140	MCC Project Punch List	15	13MAR07	02APR07				▲ MCC Project Punch List		
CFMCC_3150	AVAIL: Beneficial Occupancy (MCC)	0		19MAR07				◆ AVAIL: Beneficial Occupancy (MCC)		
CFMCC_5020	Testing	8	20MAR07	29MAR07				▲ Testing		
CFMCC_5030	Reproduction	8	20MAR07	29MAR07				▲ Reproduction		
CFMCC_5010	Furnishings	50	20MAR07	29MAY07				▲ Furnishings		
CFMCC_3155	Drawing Implementation to SLAC System	10	03APR07	16APR07				▲ Drawing Implementation to SLAC System		
CFMCC_3170	COMP: MCC Final Acceptance	0		16APR07				◆ COMP: MCC Final Acceptance		
CFMCC_3175	COMP: Main Control Center Title 3	0		16APR07				◆ COMP: Main Control Center Title 3		
1.09.03.04 Linac Facility										
MSC_CF006	CRIT: Release RFP T3 Construction Pkg (Linac)	0		12MAY06				◆ CRIT: Release RFP T3 Construction Pkg (Linac)		
CFLNF_3010	Start Construction Linac Facility	0	21SEP06					◆ Start Construction Linac Facility		
CFLNF_3040	Install Utilities Linac Facility	130	21SEP06	11APR07				▲ Install Utilities Linac Facility		
CFLNF_3050	Install Interior Utilities Electrical	130	21SEP06	11APR07				▲ Install Interior Utilities Electrical		
CFLNF_3070	Building Commissioning Linac Facility	10	29MAR07	11APR07				▲ Building Commissioning Linac Facility		
CFLNF_3080	Project Punch List Linac Facility	10	05APR07	18APR07				▲ Project Punch List Linac Facility		
CFLNF_3060	Building Complete Linac Facility	0		11APR07				◆ Building Complete Linac Facility		
CFLNF_3100	AVAIL: Beneficial Occupancy Linac Facility	0		11APR07				◆ AVAIL: Beneficial Occupancy Linac Facility		
CFLNF_3090	Drawing Implementation to SLAC System	10	12APR07	25APR07				▲ Drawing Implementation to SLAC System		
CFLNF_3110	COMP: Linac Facility Title 3	0		25APR07				◆ COMP: Linac Facility Title 3		
CFLNF_3120	COMP: Linac Facility Final Acceptance	0		25APR07				◆ COMP: Linac Facility Final Acceptance		
1.09.03.05 Research Yard/B102,B211,B113 & Storage Trailers										
MSC_CF000	CRIT: Release RFP T3 Construct (RY-CLOC)	0		09DEC05				◆ CRIT: Release RFP T3 Construct (RY-CLOC)		
CF05012900	Relocate person in Builds # 102	20	15FEB06*	15MAR06				▲ Relocate person in Builds # 102		
CF05033000	Start Construction Research Yard Mods	0	16MAR06					◆ Start Construction Research Yard Mods		
CF05012905	DWG Implementation to SLAC System RY to CLOC	5	16MAR06	22MAR06				▲ DWG Implementation to SLAC System RY to CLOC		
CF05033001	Pework Hazard Analysis Research Yard - CLOC	10	16MAR06	29MAR06				▲ Pework Hazard Analysis Research Yard - CLOC		
CF05033003	T3 Construction Research Yard Mods	79	16MAR06	06JUL06				▲ T3 Construction Research Yard Mods		

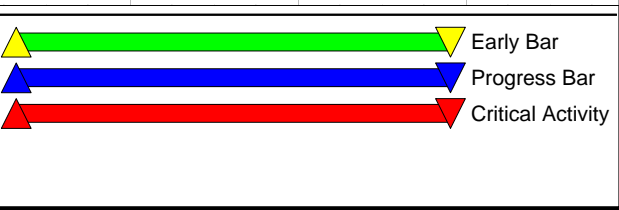
Start Date 01JUN01
Finish Date 31MAR09
Data Date 01OCT04
Run Date 29APR05 13:55

© Primavera Systems, Inc.

**LCLS
INTEGRATED SCHEDULE**

Conventional Facilities

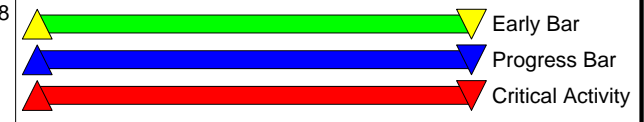
Sheet 12 of 18



Activity ID	Activity Description	Orig Dur	Early Start	Early Finish						
					2004	2005	2006	2007	2008	2009
CF05034000	AE Engineering Support for Construction	85	16MAR06	14JUL06				AE Engineering Support for Construction		
CF05034005	UTR Support for Construction	85	16MAR06	14JUL06				UTR Support for Construction		
CF05013070	Modify Bldg #102 Research Yard Mods (CEF)	10	17MAR06	30MAR06				Modify Bldg #102 Research Yard Mods (CEF)		
CF05013075	Modify Bldg #102 Research Yard Mods (GC)	20	17MAR06	13APR06				Modify Bldg #102 Research Yard Mods (GC)		
CF05033005	Install Underground Research Yard Mods (CEF)	10	23MAR06	05APR06				Install Underground Research Yard Mods (CEF)		
CF05033010	Sitework Research Yard Mods (SEM)	10	30MAR06	12APR06				Sitework Research Yard Mods (SEM)		
CF05033015	Concrete Pad Research Yard Mods (CEF)	10	06APR06	19APR06				Concrete Pad Research Yard Mods (CEF)		
CF05033065	Instl Interior Utilities Electrical (CEF)	10	13APR06	26APR06				Instl Interior Utilities Electrical (CEF)		
CF05033025	Instl Interior Utilities HVAC (CEF)	10	20APR06	03MAY06				Instl Interior Utilities HVAC (CEF)		
CF05033075	Instl Interior Utilities Fire Protection (CEF)	10	27APR06	10MAY06				Instl Interior Utilities Fire Protection (CEF)		
CF05033040	Building Complete Research Yard Mods	0		10MAY06				Building Complete Research Yard Mods		
CF05033085	Install Underground Research Yard Mods (GC)	10	11MAY06	24MAY06				Install Underground Research Yard Mods (GC)		
CF05033060	Sitework Research Yard Mods (GC)	10	18MAY06	01JUN06				Sitework Research Yard Mods (GC)		
CF05033095	Concrete Pad Research Yard Mods (GC)	10	02JUN06	15JUN06				Concrete Pad Research Yard Mods (GC)		
CF05033115	Instl Interior Utilities Electrical (GC)	10	09JUN06	22JUN06				Instl Interior Utilities Electrical (GC)		
CF05033105	Instl Interior Utilities HVAC (GC)	10	16JUN06	29JUN06				Instl Interior Utilities HVAC (GC)		
CF05033125	Instl Interior Utilities Fire Protection (GC)	10	23JUN06	07JUL06				Instl Interior Utilities Fire Protection (GC)		
CF05033045	Project Punch List Research Yard Mods	10	30JUN06	14JUL06				Project Punch List Research Yard Mods		
CF05033080	Insta Interior Partitions Research Yd Mods (GC)	10	30JUN06	14JUL06				Insta Interior Partitions Research Yd Mods (GC)		
CF05033050	AVAIL: Beneficial Occupancy Research Yard Mods	0		14JUL06				AVAIL: Beneficial Occupancy Research Yard Mods		
CF05033053	Drawing Implementation to SLAC System	10	17JUL06	28JUL06				Drawing Implementation to SLAC System		
CF22030005	Testing	40	17JUL06	11SEP06				Testing		
CF22030010	Reproduction	40	17JUL06	11SEP06				Reproduction		
CF05033054	COMP: Research Yard Final Acceptance	0		28JUL06				COMP: Research Yard Final Acceptance		
CF05033052	COMP: Research Yard Mods Title 3	0		31OCT06				COMP: Research Yard Mods Title 3		
CF22030000	Furnishings - RY through CLOC	60	02JUL07*	25SEP07				Furnishings - RY through CLOC		
1.09.03.06 Access Road & Beam Transport Hall										
CF05033007	EP Soil Disposal	160	17MAR06	31OCT06				EP Soil Disposal		
CF04033083	Start Construction Access Road Modifications	0	17JUL06					Start Construction Access Road Modifications		
CF04033084	T3 Constr Beam Transport Hall&Access Roads PH 1	54	17JUL06	29SEP06				T3 Constr Beam Transport Hall&Access Roads PH 1		
CF04033085	Access Road Modifications Research Yard Modifica	120	17JUL06	19JAN07				Access Road Modifications Research Yard Modifica		
CF04034000	AE Engineering Support for Construction	293	17JUL06	25SEP07				AE Engineering Support for Construction		
CF04034005	UTR Support for Construction	293	17JUL06	25SEP07				UTR Support for Construction		
CF04012920	REQD:DeCommission FFTB before Constr Start***	0		20JUL06				REQD:DeCommission FFTB before Constr Start***		
CF04012910	FTTB Remove Utilities	20	21JUL06	17AUG06				FTTB Remove Utilities		
CF04033094	T3 Constr Beam Transport Hall&Access Roads PH 2	248	02OCT06	25SEP07				T3 Constr Beam Transport Hall&Access Roads PH 2		
CF04033000	Start Construction Beam Transport Hall	0	22JAN07					Start Construction Beam Transport Hall		

**LCLS
INTEGRATED SCHEDULE**

Conventional Facilities



Start Date 01JUN01
 Finish Date 31MAR09
 Data Date 01OCT04
 Run Date 29APR05 13:55

Activity ID	Activity Description	Orig Dur	Early Start	Early Finish						
					2004	2005	2006	2007	2008	2009
CF04012915	FFTB Demo Building	20	22JAN07	16FEB07				▲▼ FFTB Demo Building		
CF04033005	Install Underground Util Beam Transport Hall	20	20FEB07	19MAR07				▲▼ Install Underground Util Beam Transport Hall		
CF04033010	Sitework Beam Transport Hall	20	27MAR07	23APR07				▲▼ Sitework Beam Transport Hall		
CF04033015	Concrete Pad Beam Transport Hall	10	24APR07	07MAY07				▲▼ Concrete Pad Beam Transport Hall		
CF04033020	Construct Building Shell Beam Transport Hall	100	08MAY07	27SEP07				Construct Building Shell Beam Transport Hall ▲▼		
CF04033055	Building Commissioning Beam Transport Hall	20	30AUG07	27SEP07				Building Commissioning Beam Transport Hall ▲▼		
CF04033045	Project Punch List Beam Transport Hall	10	21SEP07	04OCT07				Project Punch List Beam Transport Hall ▲▼		
CF04033040	AVAIL: Building Complete Beam Transport Hall	0		27SEP07				AVAIL: Building Complete Beam Transport Hall ◆		
CF04033050	AVAIL: Beneficial Occupancy Beam Transport Hall	0		27SEP07				AVAIL: Beneficial Occupancy Beam Transport Hall ◆		
CF04033053	Drawing Implementation to SLAC System	10	28SEP07	11OCT07				Drawing Implementation to SLAC System ▲▼		
CF04033052	COMP: Beam Transport Hall Title 3	0		11OCT07				◆ COMP: Beam Transport Hall Title 3		
CF04033054	COMP: BTH Final Acceptance	0		11OCT07				◆ COMP: BTH Final Acceptance		
1.09.03.07 Undulator Hall										
CF06053040	Building Complete Undulator Facility	0		30SEP04				◆ Building Complete Undulator Facility		
CF06053000	Start Construction Undulator Facility	0	16MAR06					◆ Start Construction Undulator Facility		
CF06053002	T3 Construction Undulator Facility	275	16MAR06	30APR07				▲▼ T3 Construction Undulator Facility		
CF06054000	AE Engineering Support for Construction	275	16MAR06	30APR07				▲▼ AE Engineering Support for Construction		
CF06053085	Tunneling UH	80	02JUN06	25SEP06				▲▼ Tunneling UH		
CF06053005	Install Underground Utilities	20	26SEP06	23OCT06				▲▼ Install Underground Utilities		
CF06053015	Concrete Pad Undulator Facility	40	24OCT06	04JAN07				▲▼ Concrete Pad Undulator Facility		
CF06053020	Instl Bldg Shell Services Buildings (2) UF	80	01NOV06	13MAR07				▲▼ Instl Bldg Shell Services Buildings (2) UF		
CF06053065	Instl Interior Utilities Electrical	20	05JAN07	02FEB07				▲▼ Instl Interior Utilities Electrical		
CF06053075	Instl Interior Utilities Fire Protection	10	22JAN07	02FEB07				▲▼ Instl Interior Utilities Fire Protection		
CF06053025	Instl Interior Utilities HVAC	30	22JAN07	05MAR07				▲▼ Instl Interior Utilities HVAC		
CF06053055	Building Commissioning Undulator Facility	20	29JAN07	26FEB07				▲▼ Building Commissioning Undulator Facility		
CF06053030	Install Interior Partitions Undulator Facility	10	14MAR07	27MAR07				▲▼ Install Interior Partitions Undulator Facility		
CF06053045	Project Punch List Undulator Facility	10	23MAR07	05APR07				▲▼ Project Punch List Undulator Facility		
CF06053050	AVAIL: Beneficial Occupancy Undulator Facility	0		29MAR07				◆ AVAIL: Beneficial Occupancy Undulator Facility		
CF06053053	Drawing Implementation to SLAC System	10	06APR07	19APR07				▲▼ Drawing Implementation to SLAC System		
CF06053054	COMP: Undulator Final Acceptance	0		19APR07				◆ COMP: Undulator Final Acceptance		
CF06053052	COMP: Undulator Facility Title 3	0		30APR07				◆ COMP: Undulator Facility Title 3		
1.09.03.08 Front End Enclosure										
CF07063000	Start Construction Front End Enclosure	0	16MAR06					◆ Start Construction Front End Enclosure		
CF07063002	T3 Construction Front End Encl - Phase 1	40	16MAR06	10MAY06				▲▼ T3 Construction Front End Encl - Phase 1		
CF07064000	AE Engineering Support for Construction	311	16MAR06	20JUN07				▲▼ AE Engineering Support for Construction		
CF07063010	Cut and Cover FEE	15	27APR06	17MAY06				▲▼ Cut and Cover FEE		
CF07063003	T3 Construction Front End Encl - Phase 2	178	09OCT06*	06JUL07				▲▼ T3 Construction Front End Encl - Phase 2		

Start Date 01JUN01
 Finish Date 31MAR09
 Data Date 01OCT04
 Run Date 29APR05 13:55

**LCLS
 INTEGRATED SCHEDULE**
 Conventional Facilities



Activity ID	Activity Description	Orig Dur	Early Start	Early Finish							
					2004	2005	2006	2007	2008	2009	
CF07063005	Install Underground Front End Enclosure	20	28MAR07	24APR07				▲▼ Install Underground Front End Enclosure			
CF07063015	Concrete Pad Front End Enclosure	10	25APR07	08MAY07				▲▼ Concrete Pad Front End Enclosure			
CF07063065	Instl Interior Utilities Electrical	20	09MAY07	06JUN07				▲▼ Instl Interior Utilities Electrical			
CF07063025	Instl Interior Utilities HVAC	20	23MAY07	20JUN07				▲▼ Instl Interior Utilities HVAC			
CF07063053	Drawing Implementation to SLAC System	10	07JUN07	20JUN07				▲▼ Drawing Implementation to SLAC System			
CF07063055	Building Commissioning Front End Enclosure	10	07JUN07	20JUN07				▲▼ Building Commissioning Front End Enclosure			
CF07063075	Instl Interior Utilities Fire Protection	10	07JUN07	20JUN07				▲▼ Instl Interior Utilities Fire Protection			
CF07063030	Install Interior Partitions Front End Enclosure	5	21JUN07	27JUN07				▲▼ Install Interior Partitions Front End Enclosure			
CF07063045	Project Punch List Front End Enclosure	10	21JUN07	05JUL07				▲▼ Project Punch List Front End Enclosure			
CF07063040	AVAIL: Building Complete Front End Enclosure	0		27JUN07				◆ AVAIL: Building Complete Front End Enclosure			
CF07063050	AVAIL: Beneficial Occupancy Front End Enclosure	0		06JUL07				◆ AVAIL: Beneficial Occupancy Front End Enclosure			
CF07063052	COMP: Front End Enclosure Title 3	0		06JUL07				◆ COMP: Front End Enclosure Title 3			
CF07063054	COMP: FEE Final Acceptance	0		06JUL07				◆ COMP: FEE Final Acceptance			
1.09.03.09 Beam Dump											
CF08073000	Start Construction Beam Dump	0	16MAR06					◆ Start Construction Beam Dump			
CF08073002	T3 Construction Beam Dump - Phase 1	40	16MAR06	10MAY06				▲▼ T3 Construction Beam Dump - Phase 1			
CF08074000	AE Engineering Support for Construction	341	16MAR06	02AUG07				▲▼ AE Engineering Support for Construction			
CF08073025	Cut and Cover Beam Dump	10	18MAY06	01JUN06				▲▼ Cut and Cover Beam Dump			
CF08073003	T3 Construction Beam Dump - Phase 2	200	09OCT06*	07AUG07				▲▼ T3 Construction Beam Dump - Phase 2			
CF08073005	Install Underground Utilities Beam Dump	10	28MAR07	10APR07				▲▼ Install Underground Utilities Beam Dump			
CF08073015	Concrete Beam Dump	40	09MAY07	05JUL07				▲▼ Concrete Beam Dump			
CF08073020	Instl Interior Utilities HVAC Beam Dump	10	06JUL07	19JUL07				▲▼ Instl Interior Utilities HVAC Beam Dump			
CF08073053	Drawing Implementation to SLAC System	10	06JUL07	19JUL07				▲▼ Drawing Implementation to SLAC System			
CF08073055	Building Commissioning Beam Dump	10	06JUL07	19JUL07				▲▼ Building Commissioning Beam Dump			
CF08073065	Install Interior Utilities Electrical Beam Dump	10	06JUL07	19JUL07				▲▼ Install Interior Utilities Electrical Beam Dump			
CF08073060	Install Steel Shielding	10	20JUL07	02AUG07				▲▼ Install Steel Shielding			
CF08073075	Install Interior Utilities Fire Prot Beam Dump	10	20JUL07	02AUG07				▲▼ Install Interior Utilities Fire Prot Beam Dump			
CF08073040	Building Complete Beam Dump	0		02AUG07				◆ Building Complete Beam Dump			
CF08073045	Project Punch List Beam Dump	10	03AUG07	16AUG07				▲▼ Project Punch List Beam Dump			
CF08073050	AVAIL: Beneficial Occupancy Beam Dump	0		09AUG07				◆ AVAIL: Beneficial Occupancy Beam Dump			
CF08073052	COMP: Beam Dump Title 3	0		16AUG07				◆ COMP: Beam Dump Title 3			
CF08073054	COMP: Beam Dump Final Acceptance	0		16AUG07				◆ COMP: Beam Dump Final Acceptance			
1.09.03.10 Near Experimental Hall											
CF09083000	Start Construction Near Experimental Hall	0	16MAR06					◆ Start Construction Near Experimental Hall			
CF09083070	Remove SLC Gas Pad	10	16MAR06	29MAR06				▲▼ Remove SLC Gas Pad			
CF09083002	T3 Construction Near Experimental Hall - Phase 1	139	16MAR06	29SEP06				▲▼ T3 Construction Near Experimental Hall - Phase 1			
CF09083010	Sitework Near Experimental Hall	20	30MAR06	26APR06				▲▼ Sitework Near Experimental Hall			

**LCLS
INTEGRATED SCHEDULE**

Conventional Facilities



Start Date 01JUN01
 Finish Date 31MAR09
 Data Date 01OCT04
 Run Date 29APR05 13:55
 © Primavera Systems, Inc.

Activity ID	Activity Description	Orig Dur	Early Start	Early Finish							
					2004	2005	2006	2007	2008	2009	
CF09083005	Install Underground Utilities Near Exper Hall	20	27APR06	24MAY06			▲▼ Install Underground Utilities Near Exper Hall				
CF09084000	AE Engineering Support for Construction	210	27APR06	12MAR07			▲▼ AE Engineering Support for Construction				
CF09083015	Concrete Pad Near Experimental Hall	10	25MAY06	08JUN06			▲▼ Concrete Pad Near Experimental Hall				
CF09083020	Install Building Shell Near Experimental Hall	80	23JUN06	16OCT06			▲▼ Install Building Shell Near Experimental Hall				
CF09083012	T3 Construction Near Experimental Hall - Phase 2	110	02OCT06	12MAR07	T3 Construction Near Experimental Hall - Phase 2		▲▼				
CF09083030	Install Interior Partitions NEH	20	17OCT06	13NOV06			▲▼ Install Interior Partitions NEH				
CF09083060	Concrete Enclosures Near Experimental Hall	20	17OCT06	13NOV06			▲▼ Concrete Enclosures Near Experimental Hall				
CF09083065	Instl Interior Utilities Electrical	40	17OCT06	13DEC06			▲▼ Instl Interior Utilities Electrical				
CF09083025	Instl Interior Utilities HVAC	40	14NOV06	26JAN07			▲▼ Instl Interior Utilities HVAC				
CF09083053	Drawing Implementation to SLAC System	10	12JAN07	26JAN07			▲▼ Drawing Implementation to SLAC System				
CF09083055	Building Commissioning Near Experimental Hall	10	12JAN07	26JAN07			▲▼ Building Commissioning Near Experimental Hall				
CF09083075	Instl Interior Utilities Fire Protection	20	12JAN07	09FEB07			▲▼ Instl Interior Utilities Fire Protection				
CF09083035	Interior Finishes Complete NEH	20	12FEB07	12MAR07			▲▼ Interior Finishes Complete NEH				
CF09083040	Building Complete Near Experimental Hall	0		12MAR07			◆ Building Complete Near Experimental Hall				
CF09083045	Project Punch List Near Experimental Hall	10	13MAR07	26MAR07			▲▼ Project Punch List Near Experimental Hall				
CF09083050	AVAIL: Beneficial Occupancy NEH	0		19MAR07			◆ AVAIL: Beneficial Occupancy NEH				
CF09083052	COMP: NEH Title 3	0		26MAR07			◆ COMP: NEH Title 3				
CF09083054	COMP: NEH Final Acceptance	0		26MAR07			◆ COMP: NEH Final Acceptance				
1.09.03.11 X-Ray Transport & Diagnostic Hall											
CF10093083	Start Construction X-Ray Transport Diagnostics	0	27APR06				◆ Start Construction X-Ray Transport Diagnostics				
CF10093085	Tunneling X-Ray Transport Diagnostics	100	27APR06	18SEP06			▲▼ Tunneling X-Ray Transport Diagnostics				
CF10093084	T3 Construction X-Ray Transport Diagnostics	292	27APR06	06JUL07			▲▼ T3 Construction X-Ray Transport Diagnostics				
CF10094010	AE Engineering Support for Construction	292	27APR06	06JUL07			▲▼ AE Engineering Support for Construction				
CF10093005	Install Underground Utilities X-Ray Transport	50	19SEP06	29NOV06			▲▼ Install Underground Utilities X-Ray Transport				
CF10093015	Concrete Pad X-Ray Transport Diagnostics Tunnel	40	30NOV06	09FEB07	Concrete Pad X-Ray Transport Diagnostics Tunnel		▲▼				
CF10093065	Instl Interior Electrical X-Ray Transport	20	27FEB07	26MAR07			▲▼ Instl Interior Electrical X-Ray Transport				
CF10093025	Instl Interior HVAC X-Ray Transport Diagonistics	20	13MAR07	09APR07	Instl Interior HVAC X-Ray Transport Diagonistics		▲▼				
CF10093075	Instl Interior Fire Protection X-Ray Transport	20	27MAR07	23APR07			▲▼ Instl Interior Fire Protection X-Ray Transport				
CF10093055	Building Commissioning X-Ray Transport	10	10APR07	23APR07			▲▼ Building Commissioning X-Ray Transport				
CF10093035	Install Interior Finishes X-Ray Transport Diagon	45	24APR07	26JUN07	Install Interior Finishes X-Ray Transport Diagon		▲▼				
CF10093040	Building Complete X-ray Transport	0		06JUL07			◆ Building Complete X-ray Transport				
CF10093053	Drawing Implementation to SLAC System	10	09JUL07	20JUL07			▲▼ Drawing Implementation to SLAC System				
CF10093045	Project Punch List X-Ray Transport	15	09JUL07	27JUL07			▲▼ Project Punch List X-Ray Transport				
CF10093050	AVAIL: Beneficial Occupancy X-Ray Transport	0		13JUL07	AVAIL: Beneficial Occupancy X-Ray Transport		◆				
CF10093052	COMP: X-Ray Transport Title 3	0		27JUL07			◆ COMP: X-Ray Transport Title 3				
CF10093054	COMP: X-Ray Transpt & Diag Hall Final Acceptance	0		27JUL07	COMP: X-Ray Transpt & Diag Hall Final Acceptance		◆				

Start Date 01JUN01
Finish Date 31MAR09
Data Date 01OCT04
Run Date 29APR05 13:55

© Primavera Systems, Inc.

**LCLS
INTEGRATED SCHEDULE**

Conventional Facilities

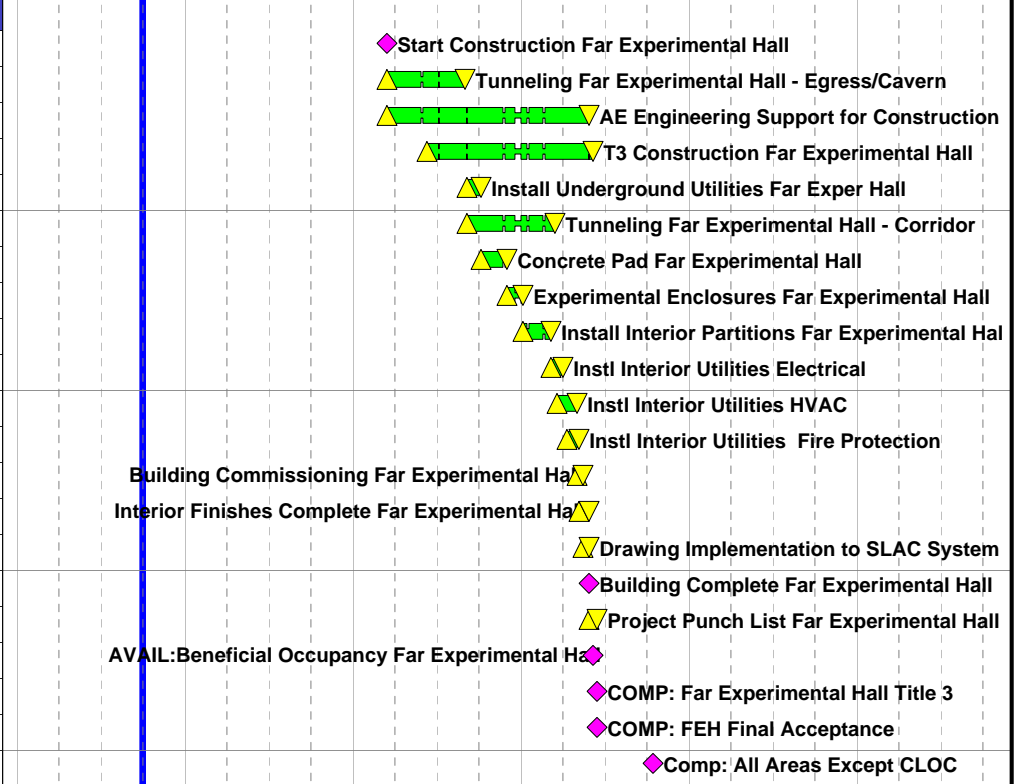
Sheet 16 of 18

▲▼ Early Bar
▲▼ Progress Bar
▲▼ Critical Activity

Activity ID	Activity Description	Orig Dur	Early Start	Early Finish						
					2004	2005	2006	2007	2008	2009

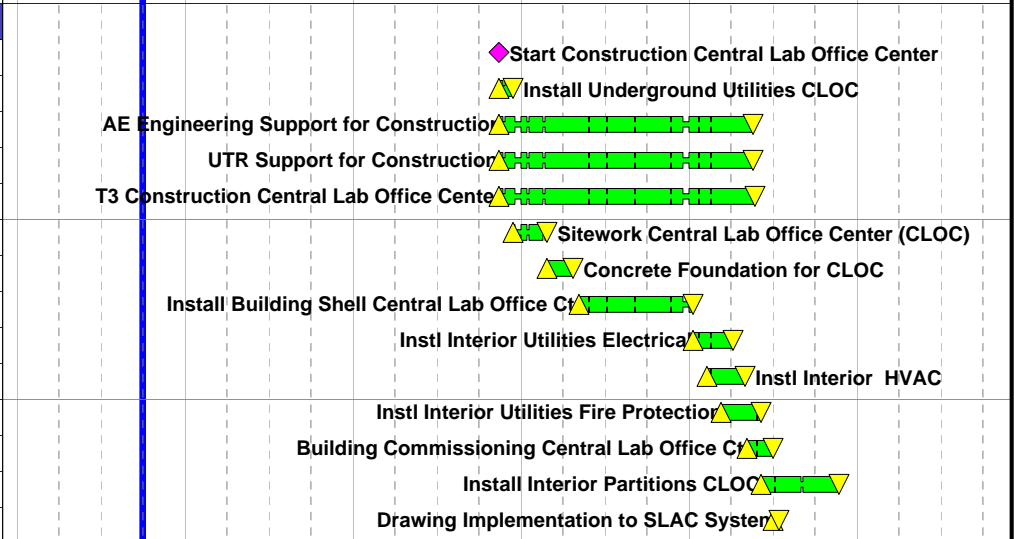
1.09.03.12 Far Experimental Hall

CF11103000	Start Construction Far Experimental Hall	0	16MAR06	
CF11103085	Tunneling Far Experimental Hall - Egress/Cavern	120	16MAR06	01SEP06
CF11104000	AE Engineering Support for Construction	295	16MAR06	29MAY07
CF11103002	T3 Construction Far Experimental Hall	239	09JUN06	04JUN07
CF11103005	Install Underground Utilities Far Exper Hall	20	05SEP06	02OCT06
CF11103095	Tunneling Far Experimental Hall - Corridor	120	05SEP06	12MAR07
CF11103015	Concrete Pad Far Experimental Hall	40	03OCT06	29NOV06
CF11103020	Experimental Enclosures Far Experimental Hall	15	30NOV06	04JAN07
CF11103030	Install Interior Partitions Far Experimental Hal	40	05JAN07	05MAR07
CF11103065	Instl Interior Utilities Electrical	20	06MAR07	02APR07
CF11103025	Instl Interior Utilities HVAC	30	20MAR07	30APR07
CF11103075	Instl Interior Utilities Fire Protection	20	10APR07	07MAY07
CF11103055	Building Commissioning Far Experimental Hall	10	01MAY07	14MAY07
CF11103035	Interior Finishes Complete Far Experimental Hall	15	08MAY07	29MAY07
CF11103053	Drawing Implementation to SLAC System	10	15MAY07	29MAY07
CF11103040	Building Complete Far Experimental Hall	0		29MAY07
CF11103045	Project Punch List Far Experimental Hall	10	30MAY07	12JUN07
CF11103050	AVAIL:Beneficial Occupancy Far Experimental Hall	0		05JUN07
CF11103052	COMP: Far Experimental Hall Title 3	0		12JUN07
CF11103054	COMP: FEH Final Acceptance	0		12JUN07
CF11103060	Comp: All Areas Except CLOC	0		11OCT07



1.09.03.13 Central Lab Office Complex (CLOC)

CF13013000	Start Construction Central Lab Office Center	0	14NOV06	
CF13013005	Install Underground Utilities CLOC	20	14NOV06	13DEC06
CF13014000	AE Engineering Support for Construction	360	14NOV06	16MAY08
CF13014005	UTR Support for Construction	360	14NOV06	16MAY08
CF13013002	T3 Construction Central Lab Office Center	365	14NOV06	23MAY08
CF13013010	Sitework Central Lab Office Center (CLOC)	40	14DEC06	26FEB07
CF13013015	Concrete Foundation for CLOC	40	27FEB07	23APR07
CF13013020	Install Building Shell Central Lab Office Ctr	160	08MAY07	09JAN08
CF13013065	Instl Interior Utilities Electrical	60	10JAN08	04APR08
CF13013025	Instl Interior HVAC	60	08FEB08	02MAY08
CF13013075	Instl Interior Utilities Fire Protection	60	10MAR08	02JUN08
CF13013055	Building Commissioning Central Lab Office Ctr	40	05MAY08	30JUN08
CF13013030	Install Interior Partitions CLOC	120	03JUN08	19NOV08
CF13013053	Drawing Implementation to SLAC System	10	01JUL08	15JUL08



Start Date	01JUN01
Finish Date	31MAR09
Data Date	01OCT04
Run Date	29APR05 13:55

LCLS
INTEGRATED SCHEDULE

Conventional Facilities

Sheet 17 of 18

Early Bar

Progress Bar

Critical Activity

Activity ID	Activity Description	Orig Dur	Early Start	Early Finish							
					2004	2005	2006	2007	2008	2009	
CF13013035	Interior Finishes Complete CLOC	20	09JUL08	05AUG08					Interior Finishes Complete CLOC		
CF13013040	Building Complete CLOC	0		05AUG08					Building Complete CLOC		
CF13013045	Project Punch List Central Lab Office Ctr	10	06AUG08	19AUG08					Project Punch List Central Lab Office Ctr		
CF13013050	AVAIL: Beneficial Occupancy CLOC	0		12AUG08					AVAIL: Beneficial Occupancy CLOC		
CF13013052	COMP: Central Lab Office Ctr (CLOC) Title 3	0		19AUG08					COMP: Central Lab Office Ctr (CLOC) Title		
CF13013054	COMP: Central Lab Office Ctr Final Acceptance	0		19AUG08					COMP: Central Lab Office Ctr Final Acceptance		
CF13013060	COMP: Central Lab Office Ctr	0		19AUG08					COMP: Central Lab Office Ctr		

Start Date 01JUN01
 Finish Date 31MAR09
 Data Date 01OCT04
 Run Date 29APR05 13:55
 © Primavera Systems, Inc.

LCLS
INTEGRATED SCHEDULE
Conventional Facilities

