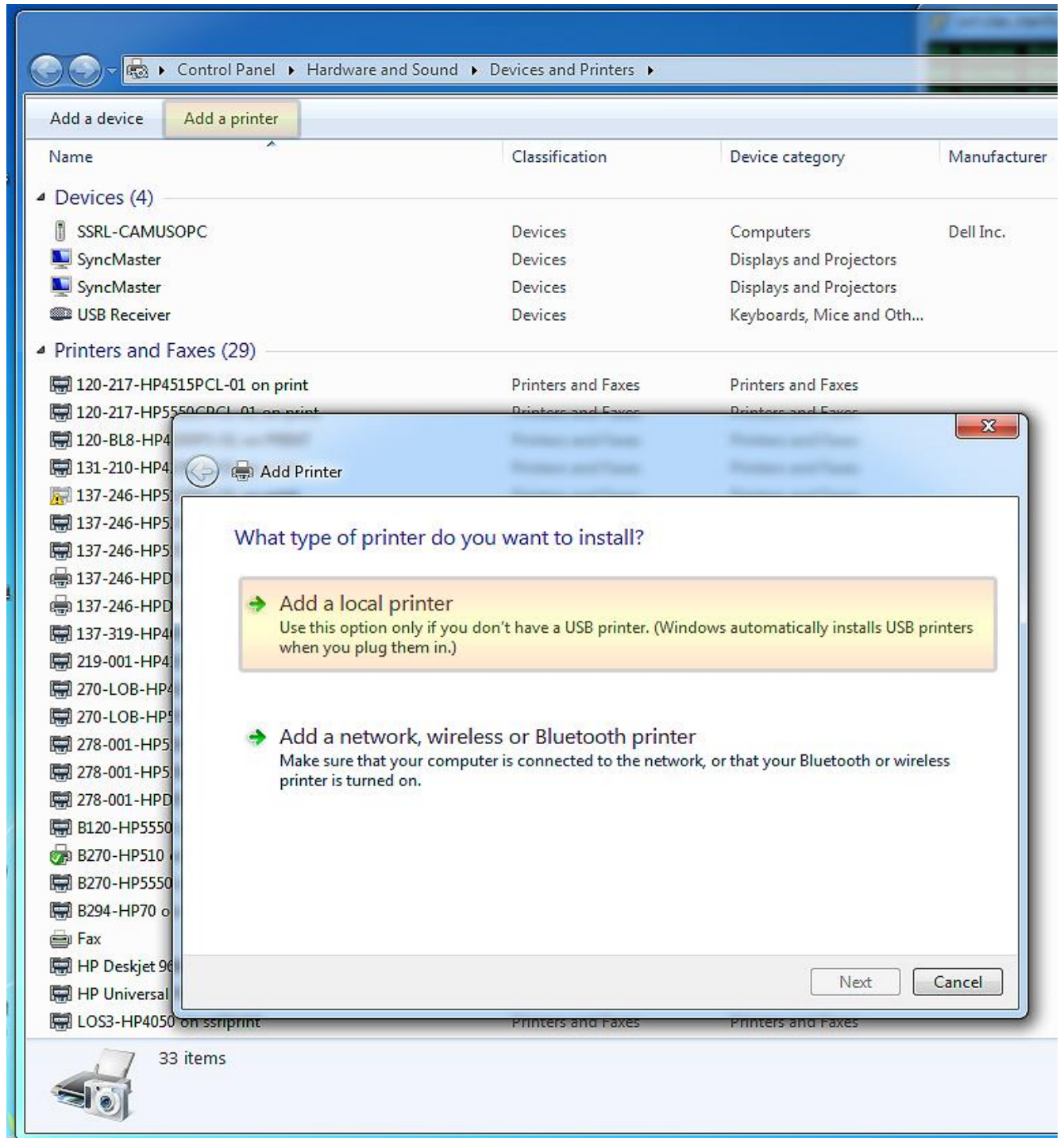


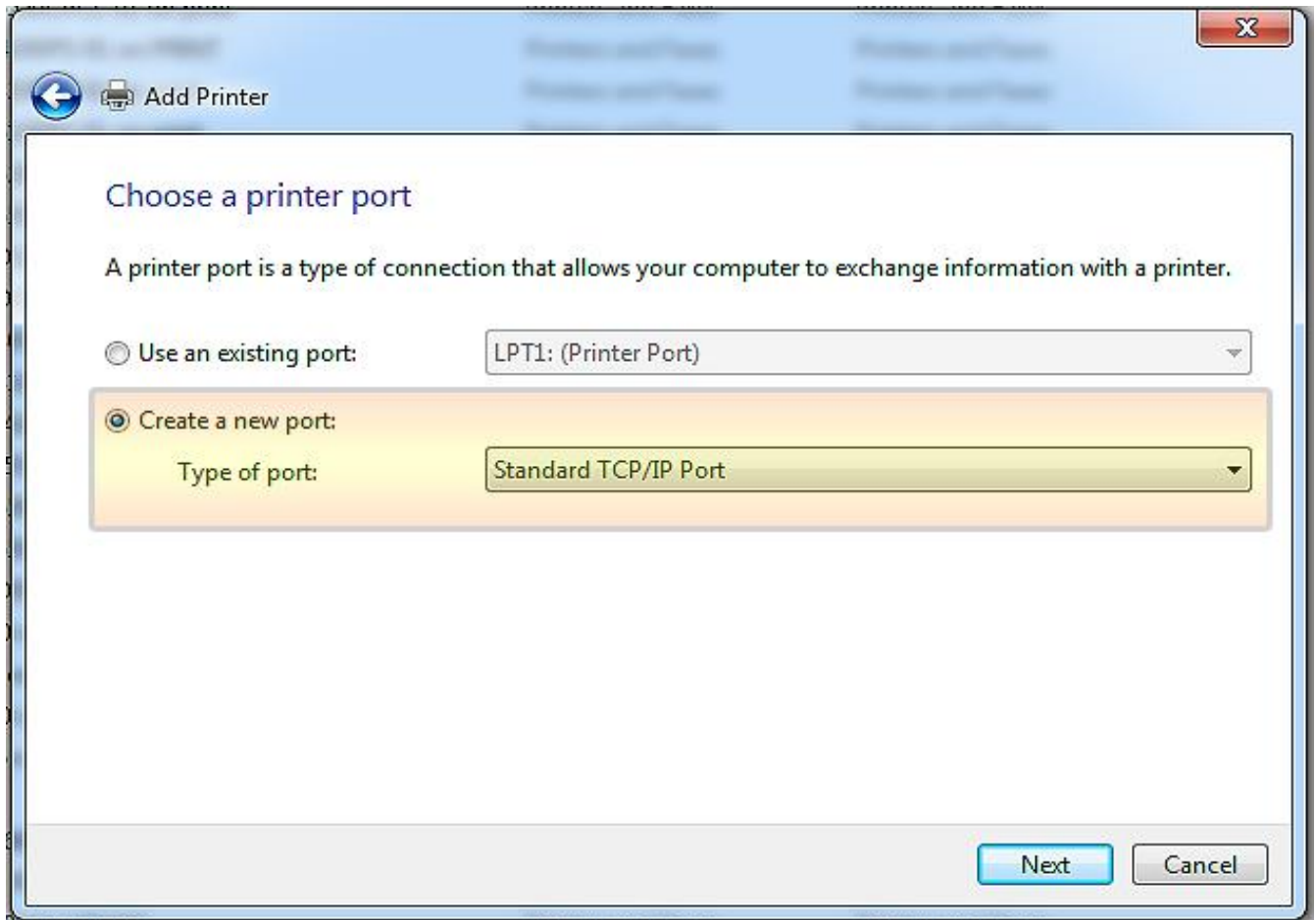
W7 printing from VISITOR network

Last Modified by Jerry Camuso, 02/12/2015.

1. From the "start menu", click on "Devices and Printers"
2. Click on "Add a printer" and choose "Add a local printer".



3 . Choose “create a new port” and pick “Standard TCP/IP Port” from the drop down menu.

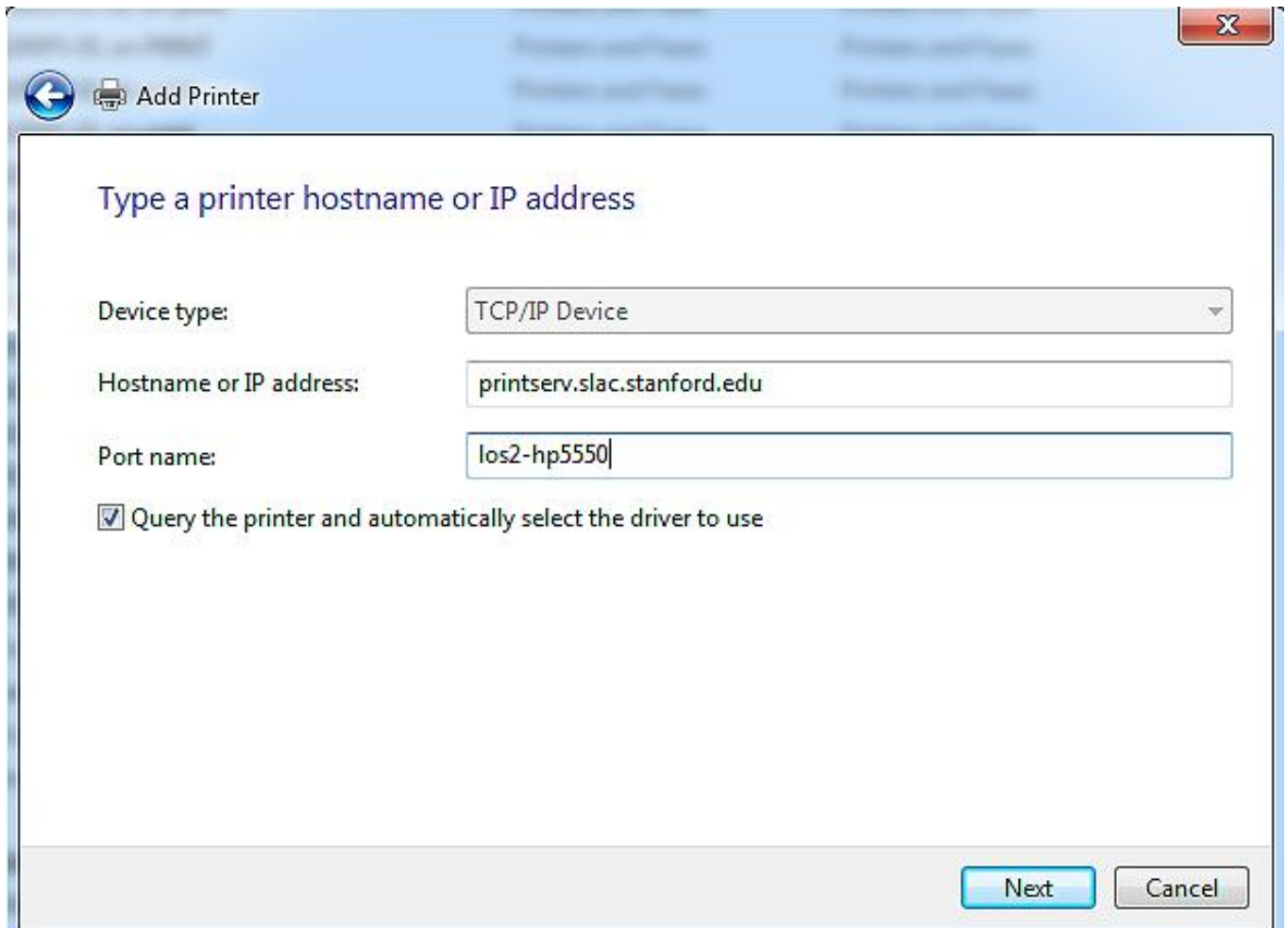


4. Type the following for the next box and click “Next”:

Hostname or IP address: PRINTSERV.slac.stanford.edu

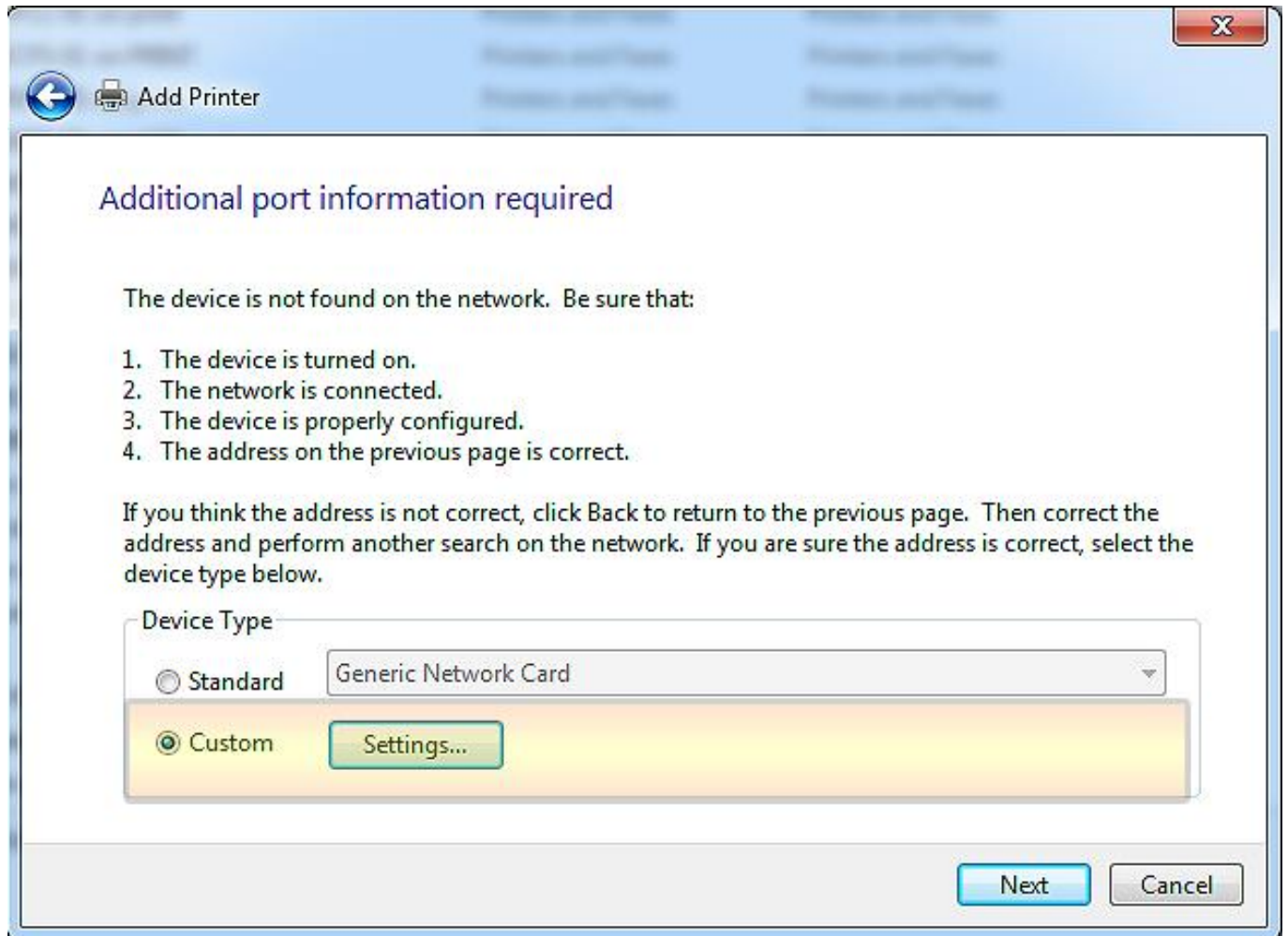
Port name: This should be the DNS queue name of the printer.

PLEASE NOTE, for beamline printing the correct queue names can be found at the bottom of this document.



The screenshot shows the 'Add Printer' wizard in Windows. The window title is 'Add Printer'. The main heading is 'Type a printer hostname or IP address'. There are three input fields: 'Device type' with a dropdown menu showing 'TCP/IP Device', 'Hostname or IP address' with the text 'printserv.slac.stanford.edu', and 'Port name' with the text 'los2-hp5550'. A checkbox labeled 'Query the printer and automatically select the driver to use' is checked. At the bottom right, there are 'Next' and 'Cancel' buttons.

5. After Detecting TCP/IP port you will arrive at the “Additional port information required” window.
Click on “Custom”, then “Settings”.



6. Click on “LPR” and fill in “Queue Name” with the correct DNS queue name. This should match the “Port Name”.

7. Make sure the “LPR Byte Counting Enabled” box is checked.

Configure Standard TCP/IP Port Monitor

Port Settings

Port Name: los2-hp5550

Printer Name or IP Address: printserv.slac.stanford.edu

Protocol

Raw LPR

Raw Settings

Port Number: 9100

LPR Settings

Queue Name: los2-hp5550

LPR Byte Counting Enabled

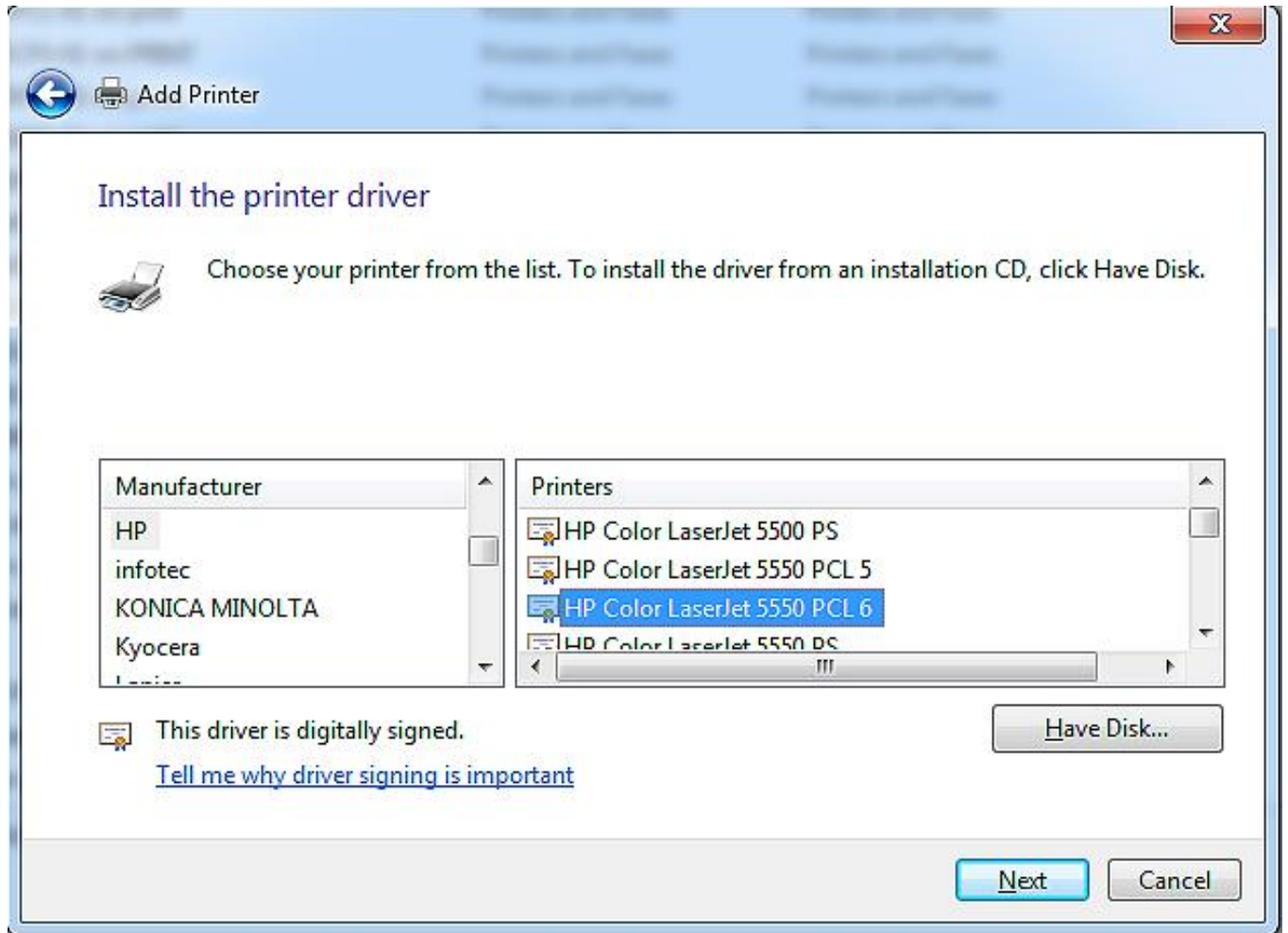
SNMP Status Enabled

Community Name: public

SNMP Device Index: 1

OK Cancel

8. W7 comes built in with most HP drivers. If you do not see your printer in the list then you must download the driver from the manufacturer.



SSRL beamline print queue names by location

Location: Beamline 6 / Queue Name: BL6-HP3525

Location: Beamline 7 / Queue Name: BL7-HP3525

Location: Beamline 9 / Queue Name: BL9-HP3525

Location: Beamline 13 / Queue Name: BL13-HP3525

For any additional questions or concerns please send email to [m\\$printers@slac.stanford.edu](mailto:m$printers@slac.stanford.edu).

Thank you

