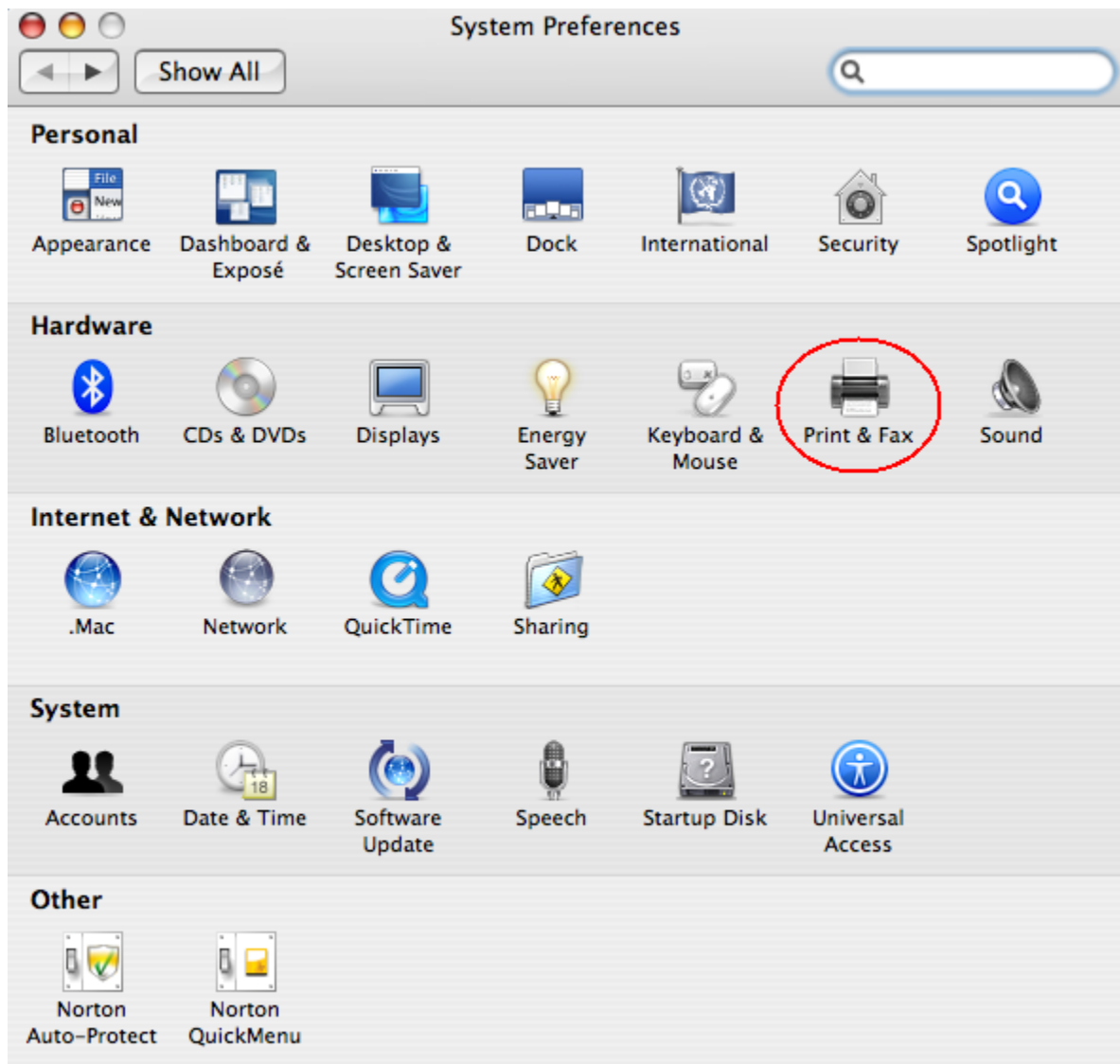


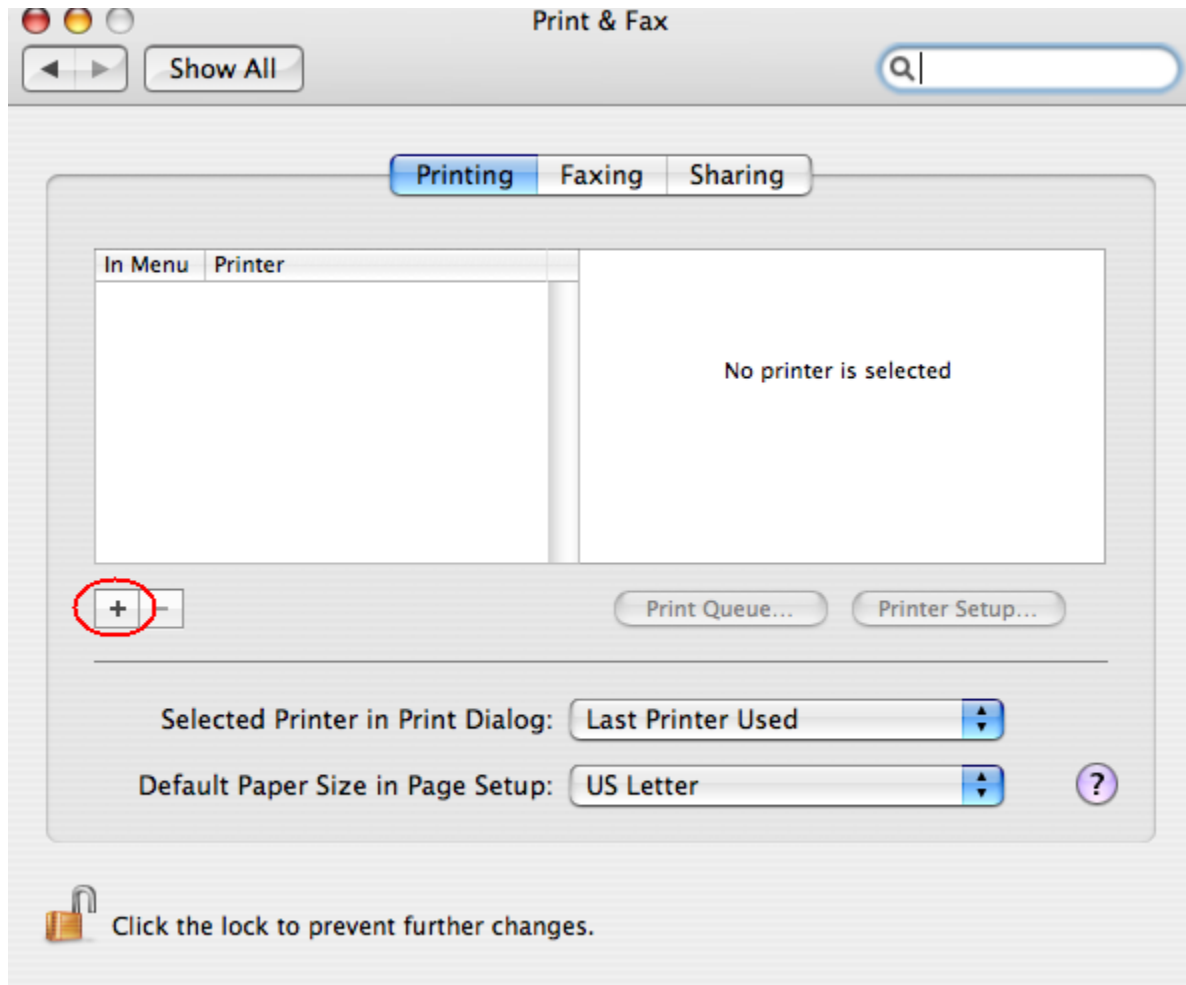
Mac OS X Printing with LPD

Last Modified by Jerry Camuso, 02/12/2015.

1 . From the "System Preferences", click on "Print & Fax"



2 . Click on "+" sign to add a new printer

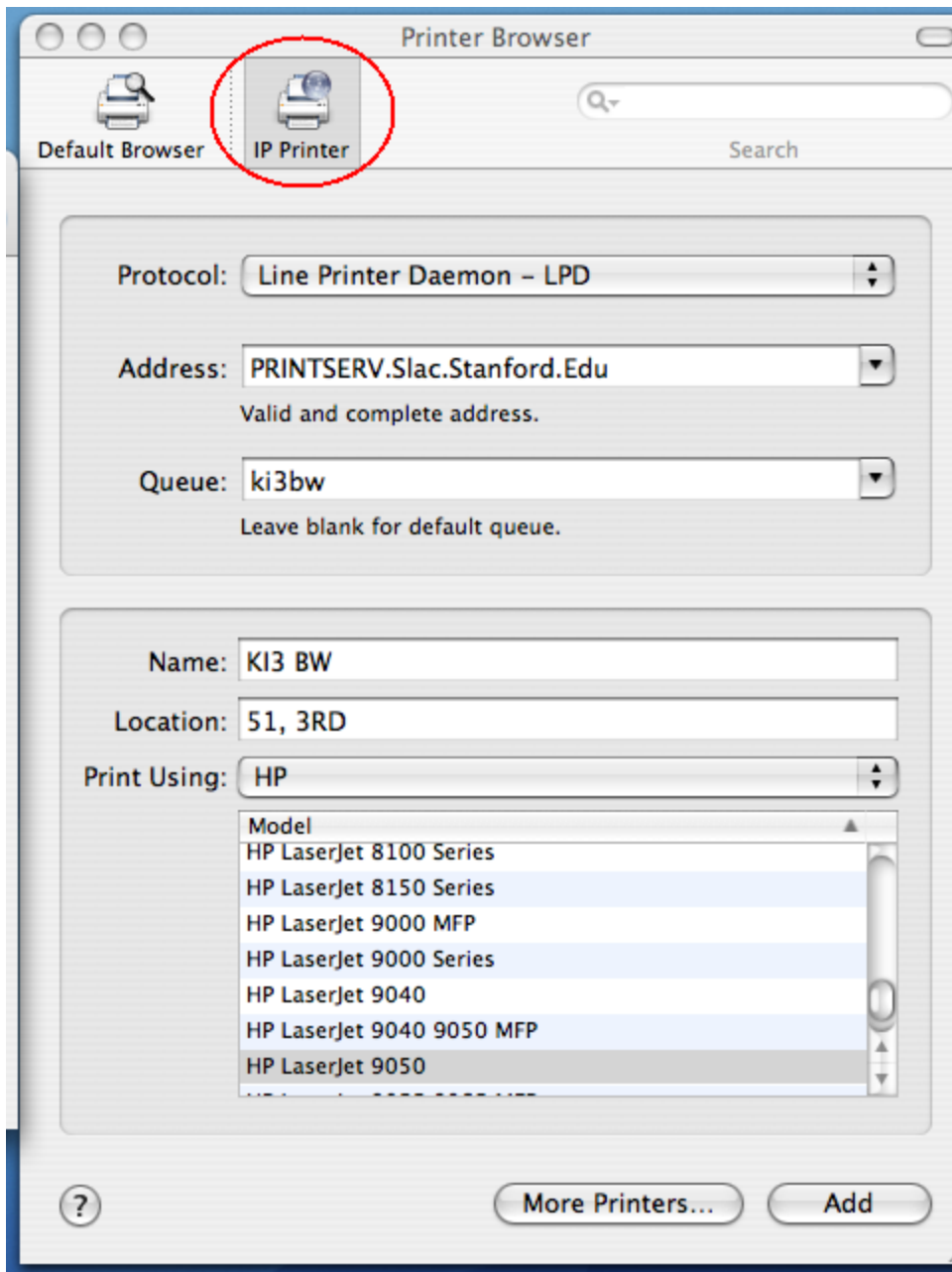


3. Use "IP Printer" and select or type the following:

Protocol: Line Printer Daemon - LPD
Address: printserv.slac.stanford.edu
Queue: Your print queue name from SLAC printserv.
PLEASE NOTE: this information can be found at the bottom of this document Under "SSRL beamline print queue names by location"

Name: You can name anything you want for your preference
Location: Physical location of printer for you to remember.
(Highly recommended to put something in there)

Print Using: Select your network printer/printer driver from the list.
If it does not show in the list, you must download the driver from manufacture.



4. Select printer preferences such as duplex, memory, or hard drive storage on printer
After that, click on "Continue" and you are done.

SSRL beamline print queue names by location

Location: Beamline 6 / Queue Name: BL6-HP3525

Location: Beamline 7 / Queue Name: BL7-HP3525

Location: Beamline 9 / Queue Name: BL9-HP3525

Location: Beamline 13 / Queue Name: BL13-HP3525

For any additional questions or concerns please send email to [m\\$printers@slac.stanford.edu](mailto:m$printers@slac.stanford.edu).

Thank you

